

## Clog Dancers will perform at Silver Lake Library

- see page 3

## Middle School Library conducts trivia contest

- see page 5

## April 26 reception is set to honor Joseph Minish

- see page 9

# The Belleville Times

Serving Belleville Since 1909

Thursday, April 11, 1985

35¢

## Dry milk to be distributed April 19

The distribution of dry milk will be conducted Friday, April 19, starting at 4 p.m. at the Department of Public Affairs, 383 Washington Ave., announced Commissioner Michael Pizzi.

The distribution, for Belleville residents only, will be based on income. Residents must show proper identification.

The guidelines are as follows: family of one, \$768 monthly income, \$9,213 yearly income; family of two, \$1,036 monthly income, \$12,432 yearly income; family of three, \$1,305 monthly income, \$15,651 yearly income; family of four, \$1,573 monthly income, \$18,870 yearly income; family of five, \$1,641 monthly income, \$22,089 yearly income; family of six, \$2,109 monthly income, \$25,308 yearly income; family of seven, \$2,378 monthly income, \$28,527 yearly income; and family of eight, \$2,646 monthly income, \$31,746 yearly income.

A resident may also be eligible for the program if he is a recipient of one of the following programs: Supplemental Security Income (SSI), General Assistance (GA), Medicaid (N.J. Health Services Program), Aid to Families with Dependent Children (AFDC), Women, Infant and Children Nutritional Program (WIC), Food Stamp Plan (FSP), and Home Energy Assistance Program (HEAP).

Persons knowing any eligible person who cannot get out to collect the milk can collect the dairy product with proper identification.

## Musical variety will be performed

The Belleville High School Chorus, Madrigal Singers, Orchestra, Chamber Orchestra and Jazz Ensemble will be featured in the music department's annual spring concert Tuesday, April 16, 8 p.m. in the school auditorium.

Musical compositions include: Mozart's Piano Quartet in E flat, "March of the Siamese Children" from the King and I, "Memory" from Cats, "Fame," and Cole Porter's "Night and Day."

The Mixed Chorus will perform three spirituals, including "King Jesus is a-Listening," "A City Called Heaven" and "Ride the Chariot."

## Matters in Brief

### Guarantee Tune-Up keeps working

Guarantee Tune-Up, an auto station on Washington Avenue, continues its operations after a fire broke out in the building two weeks ago, owner Tom Basil said.

It was erroneously reported in The Belleville Times that the one-alarm fire destroyed the building. Basil said an explosion from a car inside the building started the fire.

### Firefighter Spera gets sworn in

Ken Spera of Belleville was sworn in as a fire department mechanic at the last board of commissioners' meeting.

Spera, along with his duties as a firefighter, will be in charge of the department's vehicles.

Present for the swearing-in ceremony was Spera's wife, Vera, and Fire Chief George Sharra.

### Redevelopment forum is scheduled

The Belleville Chamber of Commerce will conduct a fact-finding forum on the issue of redevelopment Wednesday, April 17, 7 p.m. at the Fewsmith Presbyterian Church, 444 Union Ave.

The forum will consist of two authoritative panels, each with an alternate method of achieving redevelopment.

Members of the business community will have an opportunity to ask the panels questions concerning the matter of redevelopment. Members of the board of commissioners will be present as observers.

Only business or commercial property owners will be admitted. Proper credentials, such as a business or identification card, must be presented at the door.

### Belleville man dies in car accident

George McDaniel, 61, of Rutgers Street was killed Saturday night when his car crashed into a cement divider on Route 21 in Nutley.

Nutley Patrolman Robert Malanga said an unidentified witness who was driving behind McDaniel said he saw him slump over the steering wheel before hitting the divider.

An autopsy to determine the cause of death is being performed.

## D'Agostino becomes school board president; Zoppi and Cappello sworn in as members

By Michelle Jeannotte

Before a standing room only crowd, the board of education met Monday night to nominate its new president and vice president.

Dr. Anthony D'Agostino, a six-year member, was nominated the board's president, while in a surprise move, one-year member was nominated the board's vice president.

The nomination of D'Agostino was not unexpected. The senior member of the board has served as the board's vice president for the past year.

In accepting the nomination, D'Agostino said he has more than six years of preparation for the post.

"I know the job well," he said. "I am confident and optimistic we (the board) will work along the same lines. I believe this board is solid in its thinking and that the expertise of its members will continue to be an asset to this board."

"I am a student of group dynamics," he added. "Collectively we will succeed. You'll be hearing from me."

Linfante, the new vice president, was also optimistic about the future of the board.

"I know that Tony (D'Agostino) and I will continue the communications started by Grace (Purdue, former president)," he said. "I feel great pride in being nominated by my colleagues after one year

on the board. I believe they have recognized that I can do a good job."

Looking ahead to some of his objectives as the board's vice president, Linfante said the most important aspect in the school system is communication.

"We have to continue our communication with the public, especially the parents," he said. "We have to listen to them, hear their problems and answer their questions."

Both D'Agostino and Linfante expressed their positive views about the passage of the budget.

"It makes my job a lot easier," D'Agostino said. "The administrators told us what they needed and we budgeted it. Then the community passed the budget and now the administrators have what they need financially to meet our goals."

"Our school system is getting better thanks to administration," Linfante said.

(Continued on page 14)



New Officers - Phil Linfante, left, and Dr. Anthony D'Agostino were sworn in Monday night as the board of education's new vice president and president, respectively. D'Agostino is a six-year member of the board and has served as the board's vice president for the past year. Both will serve one-year terms.

## Korean boy will receive medical treatment through the efforts of local Rotary Club

By Michelle Jeannotte

Through the efforts of the Belleville Rotary Club, a 5-year-old Korean boy suffering from a congenital heart defect will receive the medical treatment he needs to survive.

In Woo Jun was one of four Korean children arriving at John F. Kennedy Airport Sunday night. The children, all of whom need corrective cardiac surgery, were flown here through the international Rotary's Gift of Life Program, Rene Gabbai, Belleville Rotary Club International chairman said.

Funding from the program will provide the medical treatment for the children, each of whom will undergo heart surgery at Children's Hospital of New Jersey in Newark within the next few weeks.

Dr. Joseph J. Amato, director of the hospital's pediatric cardiac surgical unit and Belleville Rotary member, will lead a surgical team in these operations.

The children, three boys and one girl, will be the guests of Korean-American families in Belleville, Dover, Fairfield and Madison, Gabbai said.

In Woo Jun will be living with the Pak Family of Academy Street in Belleville during his stay here in the United States. In Woo, the only child of parents from south of Korea, will undergo tests this week.

Gabbai said that In Woo was chosen to stay in Belleville because of his condition. In Woo suffers from the most serious heart condition of the four children and physicians believed he should stay close to the hospital during his stay in the U.S.

His surgery is scheduled in two weeks.

Mrs. Mary Pak, who has opened up her home to Jon, said that she welcomed the opportunity to help people from her country. The native of Korea, who came to America almost 10 years ago, said she volunteered for the undertaking because she knew the boy might need some help in getting used to American ways.

Mrs. Pak will be getting some help in taking care of In Woo from two of her four children. Her son, Paul, a freshman at Queen of Peace High School, said he will play the role of the big brother during In Woo's stay here.

"My job is to play with him and keep him busy," Paul said, adding that they will be helping each other break the language barrier.

After his surgery, In Woo will remain at the Pak home until doctors believe he is ready to travel back home, Gabbai said. The four children are expected to return home together, he added.

Gabbai said that once In Woo is recovered from his surgery, he will be taken to a Rotary Club meeting where he will meet fellow Rotarians. He also said that before In Woo leaves for home, he will be taken on outings throughout the area.

"Many people have heard about this little boy and they all want to meet him," Gabbai said as he held the young boy who wore a New York Yankees cap.

It seems that the love these people are showing this boy is all they need to break the language barrier.



Getting a Lease on Life - These four Korean children arrived in the United States Sunday night through the efforts of four district Rotary Clubs. Each will undergo heart surgery at the Children's Hospital in Newark. One of the boys, In Woo Jun, right, is staying with the Pak Family in Belleville.

## Belleville bridge faces closing to undergo extensive repair work

The Route 7 bridge which links North Arlington and Kearny to Belleville is scheduled to be closed this September for repair work.

The bridge will be closed to vehicular traffic for four weekends to allow for water traffic to continue, a Department of Transportation (DOT) spokeswoman said this week.

Extensive rehabilitation of the bridge will continue for one year with completion slated for September of 1986. The date of the bridge closing may change if a contractor cannot be hired before September, the DOT spokeswoman said, adding that bids for the rehabilitation project will be posted sometime in June.

Work on the bridge will include deck patching, repair of the surrounding piers and substructures, cleaning and repair of electrical cables and a realignment of the bridge.

The cost of this project has not yet been estimated, the spokeswoman said.

Mayor Michael Marotti said he has received no official word of the closing as of yet. However, he did say his office called the DOT and was informed of the September closing.

"We can't stop them from doing this," he said, referring to the cutoff of traffic resulting from the closing.

Marotti added that Nutley and Lyndhurst are experiencing with the closing of the Avondale bridge which links those

two towns. The bridge was first closed two years ago and is expected to reopen this month.

The closing of the Avondale bridge resulted in the extra flow of traffic through Belleville to the Route 7 bridge. Most of the traffic over the bridge is caused by motorists traveling on the "Belleville Pike," Marotti said. The "pike" travels through Belleville and Kearny and eventually filters into roadways used to reach the Lincoln and Holland tunnels.

"Once the bridge is closed, motorists will have to double back to get to the pike," Marotti said. "Even if motorists take the Clay Street Bridge in Newark, they will still have to double back."

## Dr. Dominick Ligresti joins Belleville Chamber of Commerce

By Howard Halpern

The Belleville Chamber of Commerce welcomes Dr. Dominick Ligresti as a proud new member.

Dr. Ligresti specializes in dermatology and dermatology surgery at 50 Newark Ave., Suite 104. The doctor hails from Brooklyn, N.Y., and has practiced in Belleville for the past two years. A newlywed since last July, he's kept quite busy not only with his practice but also helping his lovely wife Renee with her law studies at home.

One of Dr. Ligresti's objectives is to prevent skin cancer, the most common form of cancer in the U.S. "There are three types of skin cancer, Basal Cell Carcinoma, Squamous Cell Carcinoma, and Malignant Melanoma," he said. "The most common is Basal Cell which are found in the head and neck, especially those with light-colored eyes, blond or red hair and light complexions. This cancer might appear after the age of 40."

The second most common is Squamous Cell, although it is most common in heavily pigmented races. Ligresti said. This type of cancer is usually induced by chronic irritation rather than sun exposure. The third most common skin cancer is the Malignant Melanoma. It is the most dangerous type of skin cancer and has the ability to spread to other parts of the body.

Basal and Squamous Cell Carcinomas almost always remain localized. Malignant Melanoma can be present in several forms. One form begins as a light brown spot that

spreads out. Another form presents as a multicolored black, blue, brown plaque that grows out and has a rough surface. Easy bleeding is an alarming sign.

A third form Nodular Melanoma, is a dark brown/black growing nodule of several months duration. Increase in size and depth of color, onset of bleeding, oozing and ulceration are all danger signs. Dr. Ligresti's foremost recommendation is to stay out of the sun.

Richard Bing is the owner of B & M Machine Co. and brand new member of the Belleville Chamber of Commerce. The company has been located in Belleville for the past 30 years.

The B & M Machine Company is a jobbing machine shop for the U.S. Aero Space Program and commercial industry. They manufacture exotic metals that can withstand extensive heat. These metals are used as fasteners to hold aircraft wings to the body and the engine to the wing.

The Titanium Metal is used for the after burners on military and aerospace aircraft. B & M has been instrumental in supplying the government with parts for the new B-1 bomber.

Since the increase in aerospace research B & M has been very busy shaping and forming these exotic metals. On the commercial side B & M manufactures parts for the printing industry such as rollers and printing presses. Bing stresses quality control and follows strict government regulations. He currently employs 15 people.

## Dr. T. Dorrity joins optometrist practice

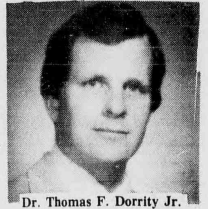
Dr. Seymour P. Fischer, an optometrist in Belleville for 45 years, has added another optometrist to his practice.

Dr. Thomas F. Dorrity Jr. is now associated with Dr. Fischer in the complete practice of optometry at 500 Washington Ave., corner of Little Street.

Dorrity, a graduate of Seton Hall University and Pennsylvania College of Optometry, has been accepted into the contact lens section of the American Optometric Association. He lives in Caldwell with his wife, Gina and two month old daughter, Katherine Nicole.

The group, which includes three assistants, provides a full family eye care service in-

cluding complete eye examinations, fitting of contact lenses and frame selection from a vast assortment. The office provides complete eye examinations six days and two evenings a week by appointment.



Dr. Thomas F. Dorrity Jr.

## Another DeCarlo Sale!



This spacious Victorian style home was recently sold by Ann DeCarlo Agency, Inc.

**Ann DeCarlo**

AGENCY/REALTOR  
880 BROAD ST., BROOKDALE, BLOOMFIELD  
748-5288



# HONDA

SCOOTERS



Prices  
Start At  
**\$399**



165 WASHINGTON AVE.  
BELLEVILLE  
751-4543  
751-7727

## Seven residents receive honors in academics

Seven Belleville residents have received academic honors for the fall 1984 semester at Bloomfield College.

High honors were awarded to Toni Auerbach, Ermine Costa, Catherine Tighe and William Tuttle, while honors were awarded to Nicholas Lacerenza, Donald Moran and Sandra Muracchioli.

Bloomfield College is an independent, four-year liberal arts college offering a variety of degree and certificate programs. Founded in 1868, the college currently enrolls over 1500 students.

# BUY RITE

LIQUOR

PRICE: EFFECTIVE THURS. APRIL 11TH THRU SAT. APRIL 13TH

OF NEW JERSEY GET THE SPIRIT OF BUY-RITE!

1049 LITER  
1216 LITER  
1110 LITER  
730 LITER  
1154 LITER  
660 LITER  
298 LITER  
559 LITER  
399 LITER  
700 LITER  
695 LITER  
499 LITER  
1019 LITER  
1320 LITER  
1149 LITER  
399 LITER  
499 LITER

MARTELL  
BERNARDINI  
CUTTY SARK  
MICHOE  
KRONENBORG  
ANTINORI  
COLONY  
GIACOBBI  
BLANCO  
WALKER  
SAMBICA  
DE FANTIS  
CATTANI

NUTLEY WINE SHOP

558 Franklin Ave. Nutley 667-1315

1885 1985

100 Years of Uninterrupted Dividends

# GIVE TAX THE AX!

WITH FIRST DeWITT's  
**High Rate IRA\***

\*Individual Retirement Account

You cut taxes and SAVE!  
You get a HIGHER RETURN on savings  
Your funds increase FAST  
You get total SECURITY!  
And you retire RICH!

OPEN AN IRA NOW AND SAVE ON 1984 INCOME TAXES



# 1 FIRST

## DeWITT SAVINGS

AND LOAN ASSOCIATION

BELLEVILLE • BLOOMFIELD & CEDAR GROVE

TELEPHONE **751-2800** ALL OFFICES



**Folk Dancing** - The Cider Hill Cloggers will perform a special program of Appalachian-style clog dancing at the Silver Lake Branch Library this Sunday. The program is part of a series of activities which emphasize National Library Week (April 14-20).

## Cider Hill Cloggers dance Appalachian-style this Sunday at Silver Lake library branch

A program of Appalachian-style Clog Dancing by the Cider Hill Cloggers will be conducted Sunday, April 14, from 2-3 p.m. at the Silver Lake Branch Library on Magnolia Street.

The Cider Mill Cloggers are a Roseland based group of eight dancers, including dance captain Patty Schneider of Belleville. The Cloggers perform a variety

of high stepping and tap dancing routines based on this entertaining folk style. The Cider Mill Cloggers will be accompanied by a string band, playing acoustic instruments.

The program will include a brief ceremony in recognition of the 20 years of library service offered by the Silver Lake Branch. This program will also begin a

week-long series of special programs to acknowledge National Library Week at the Belleville Public Library.

Refreshments and partial funding for the program by the Cider Mill Cloggers will be provided by the Friends of the Belleville Public Library. No admission will be charged.

## JoAnn Rizzolo 'outstanding woman'

JoAnn Catherine Rizzolo of Belleville has been selected by the Board of Advisors for the Outstanding Young Women of America for inclusion in the 1984 edition of "Outstanding Young Women of America."

The Outstanding Young Women of America program is designed to honor and encourage exceptional young women between the ages of 21 and 36 who have distinguished themselves in their homes, their professions and their communities. Accomplishments

such as these are the result of dedication, service and leadership.

The goal of the many leading women's organizations, college alumni associates and public officials who nominate deserving young women to participate in the program is to recognize these qualities. Serving as chairman of the program's advisory board is Margaret Arnold, honorary president of the General Federation of Women's Clubs.

Rizzolo, along with approx-

imately 30,000 other young women from across the United States, will be presented in the prestigious annual awards volume. This awards volume also highlights the 51 women who, because of their contributions have been selected as the outstanding young women of their respective states, as well as those who ultimately were selected as the 10 Outstanding Young Women of America.



### Diets Made to Order

#### Complete Nutrition Counseling

- ALL MEDICAL DIETS
- QUICK WEIGHT LOSS
- SPECIALLY DESIGNED DIETS FOR CHILDREN & ADOLESCENTS
- DIETS FOR GOOD HEALTH

MARY ANN ZIMMERMANN, MA, R.D.

Registered Dietitian/Nutritionist

6 POMPTON AVENUE, SUITE 15 CEDAR GROVE • 239-5663

### AUTO INSURANCE PROBLEMS?

- Free Quotes
- Same Day Coverage
- No Obligation
- Personal Service

"Selling Insurance Since 1915"

### Eugene J. Reilly

Real Estate - Insurance

Auto - Home - Life

394 Washington Ave. Belleville  
759-1682

### Mary Anne Carissimo

takes pleasure in announcing  
the opening of her office  
for the practice of  
General Dentistry

184 Pompton Avenue, Verona, N.J.  
Tel. 239-8315

Hours By Appointment

### VIDEOTRONICS

473-8637

VHS No Membership Thousands of Titles In Stock All Ratings No Club To Join BETA

3 tapes for any 2 weekdays or 3 days in the weekend  
**\$7.99**

Any Tape **\$1.99** per day

Every Wednesday Rent One Tape \$1.99  
Get Second Tape 99¢

Videotronics Movie Rental Offer

**The Double Feature**  
Rent any movie at our regular low price and receive 2nd rental

**FREE**

coupon per customer  
valid with any other offer

503 Paulison Ave.  
ShopRite Plaza  
Passaic

Mon-Fri. 11am-9pm  
Tues. Wed. Thurs. 12noon-9pm  
Sun. 12 noon-3 pm

## LEVI'S ACTION JEANS

WITH A SKOSH MORE ROOM™

Whatever the occasion, Levi's Action Jeans fit right in. They have a skosh more room in the seat and thigh for a slightly fuller cut, plus a unique comfort waistband and a fabric that actually moves with you. What's more, they offer you a dressy, yet casual look. Levi's Action Jeans. They fit in anywhere.

**Levi's for men**  
WITH A SKOSH MORE ROOM™



**Levi's**  
MADEWEAR

The word "Levi's" is a Registered Trademark of Levi Strauss & Co. San Francisco, CA. © 1985 Levi Strauss & Co.

QUALITY NEVER GOES OUT OF STYLE™

Sizes to 54

## ATLANTIC UNIFORM

444 Washington Ave.  
Belleville 751-1242



Open 9 AM-5:30 PM

Mon. & Fri. Til 7:30 PM



# The Belleville Times

Serving Belleville Since 1909 (USPS 049-220)

Published Every Thursday  
At 155A Washington Ave.  
Belleville, N.J. 07109

Annual Subscription \$12.00  
Senior Citizens \$7.00

Second-Class Postage Paid  
At Newark, N.J.  
Postmaster: Send address  
changes to The Belleville Times,  
155A Washington Ave., Belleville, N.J. 07109

Publisher: Frank A. Orechio  
Assistant to the Publisher:  
Michelle Jeannotte

759-3200

## Footprints to Remember

One night a man had a dream. He dreamed he was walking along the beach with the Lord. Across the sky flashed scenes from his life. For each scene, he noticed two sets of footprints in the sand. One belonging to him, and the other to the Lord.

When the last scene of his life flashed before him, he looked back at the footprints in the sand. He noticed that many times along the path of his life there was only one set of footprints. He also noticed that it happened at the very lowest and saddest times in his life.

This really bothered him and he questioned the Lord about it. "Lord, you said that once I decided to follow you, you'd walk with me all the way. But I have noticed that during the most troublesome times in my life, there is only one set of footprints. I don't understand why when I needed you most you would leave me."

The Lord replied, "My son, my precious child, I love you and I would never leave you. During your times of trial and suffering, when you see only one set of footprints, it was then that I carried you."

Author Unknown

## Service Above and Beyond

In typical Rotarian fashion, the Belleville Rotary Club members participated in a national effort to bring to this country four Korean children who require open heart surgery unavailable to their native lands.

Belleville Rotary Club members gave substantial assistance in arranging transportation, immigration clearance and housing for the children until they enter Newark's Children Hospital, where the operations will take place.

Belleville President Norman Thompson of past president Rene Gabbai headed up the local successful effort. Too often, our service clubs work quietly and effectively to improve the quality of life for the disadvantaged. Seldom do they get - or do they want - deserved publicity for their unselfish efforts.

The current episode of extending the helping hand should not go unnoticed. The plight of the four Korean kids came to the attention of Rotary National,

and practically overnight, members at every level opened their arms and their hearts to the needs of the four children. This demonstration of the golden rule is no stranger to the Belleville Rotary Club. Instinctively, its members hold out their open hands in the true spirit of helping their neighbor.

We congratulate Norman Thompson and Rene Gabbai and the entire membership of the Belleville Rotary Club for the exercise of brotherly love. God Bless them all - and the four Korean children who probably would not make it without the help of our wonderful Rotarian

*Frank A. Orechio*

## Police Headquarters

For more than a quarter of a century, various community leaders have focused on the need for new quarters for our fine, effective police department. The make-do basement quarters established several decades ago may have been alright when it was originally conceived; but today, it is too small, too stuffy, to reminiscent of the Stone Age for Belleville not to consider giving the police new quarters in which to work.

The surprise is that despite the terrible working conditions, the morale of our police department personnel is very high.

The town itself could take the lead in giving Washington Avenue a new face by going ahead and altering our present Town Hall in order to accommodate a new police headquarters and other municipal of-

fices operating all over town.

Such a proposal was put forth 23 years ago only to be shot down by politicians more concerned about their political future than the future of their community they were elected to serve. Upgrading Washington Avenue is not an insurmountable task. The Town of Belleville could lead the way by committing itself to spend the money necessary to modernize Town Hall, and in the process provide new and additional quarters for the police department and other departments of government.

*Frank A. Orechio*

## Heed garbage removal laws and keep Belleville clean

To the editor:

Garbage men do get holidays off - approximately 12 days per year - including election day.

Surrounding towns put advertisements in the papers stating "no garbage collection due to the closing of the dumping area" on every holiday. If the dumps are closed for one town, then they are closed for all towns.

People put out garbage anyway and it stays there until the next pickup three or four days later.

If you want to know what days to refrain from putting your garbage out, call the board of health.

Garbage cans should be put out at 5 p.m. the day before pickup and taken in by 5 p.m. the next day.

There are township laws which are seldom enforced. As a taxpaying citizen, I resent people who slop up our town with their garbage. If everyone, including many of my neighbors, would police themselves, our town would look clean.

I want to be proud of my neighbors and neighborhood, so before we look

like a "blighted area" heed the garbage removal laws.

Betty P. Barr  
Chestnut Street

## Cappello thanks his supporters

To the editor:

I would like to thank all the citizens of Belleville who voted last Tuesday. I appreciate their endorsement to serve on the Belleville Board of Education.

I would also like to thank The Belleville Times and Orechio Broadcasting Company for their excellent and nonpartisan coverage of the school board election.

With my most sincere appreciation, I again say thank you.

Dr. Joseph M. Cappello  
Charles Street

## Letters to the Editor

## Budget passage commended

To the editor:

The concern of the people of Belleville for our children and the quality of education has manifested in this year's passage of the budget.

Unity of our community is the key to our children's future. You the voters have shown what a unified community can do. We commend the

voters of our township for continuing a high level of education in our school system.

On behalf of the Consolidated Associations of Recognized Organizations of Parents and Teachers, we extend to our community a heartfelt thank you.

Barbara Cicalese  
Consolidated Chairperson

## Superintendent is grateful

To the editor:

The passage of our school budget signals a vote of confidence in our educational system.

Many people must be commended for this positive showing. Our parental groups, our senior citizens, the publisher of this newspaper, and most

of all, every member of our fine community can take pride in this achievement.

For the board of education and our school children, I say a profound thank you to all.

Michael D. Nardiello  
Superintendent of Schools

## Mental Health Services thanks firefighters for quick response

To the editor:

On behalf of the staff and clients of the Community Mental Health Services of Belleville, Bloomfield and Nutley, I want to express our thanks to the members of the Belleville Fire Department who responded so quickly during two recent fires at our facility. They

carried out their duties in a most professional manner and quickly brought the situation under control.

We all feel safer knowing that such help is so close at hand here in Belleville.

Allice Ricci,  
ACSWS  
Executive Director  
CMHS

## Golden Comments

by James R. Golden

In recognition of the poor quality of education, especially in the public school systems, there is manifestation of a new willingness to pay more for education — but not more for the same education. The mood is insistence upon better education and better educational results.

Teachers should not only support these higher expectations writes Gregory Anrig, whom we referred to in the previous column. He insists they should lead in achieving them. He applauds Albert Shanker, president of the American Federation of Teachers, who recently called for a new national teacher test to assure the public that aspiring teachers who pass it have not just minimal educational skills but basic knowledge at a professional level.

Rainer uses each state imposing different standards, the teaching profession can determine its own standards, supplemented as necessary by state-specific requirements as in profession of law and medicine; applauding Shanker's willingness to make such a test a future condition of membership in his organization.

Any nationwide approach should come from the teaching profession itself and not from the federal government.

It is time for the profession to act on the matter of incompetent teachers. A teacher's failure to meet

minimum teaching standards in the classroom does violence to the educational rights and opportunities of children. That teacher's colleagues suffer, as does the entire profession. Teachers have an obligation to help assure competence in their ranks.

Anrig further writes that he believes the best way to achieve this is active peer involvement in the supervision, development and evaluation of teachers. Assured by creditable involvement of its own members that a teacher has been judged incompetent by criteria and procedures that are fair, affiliates of the American Federation of Teachers and the National Education Association should support rather than resist appropriate termination actions.

Anrig concludes by writing, "The strength of educational reform in the 1980s lies in the fact that its dynamism has come from communities and states across the land. It has been nationwide rather than national, and that is the way it should continue. While those in the 'bully pulpits' of Washington can help by constructive exhortation, the real leadership must come from the towns and cities and states of America. The search for excellence in schools is a citizens' movement, and that includes you and me."

We concur.

## Question of The Week

By Stacy Wolf

Question: What is your spring resolution?



Denyse DeAngel  
video data operator  
Bloomfield

"My spring resolution is to become more health conscious. I am planning to join a health spa and start an aerobics class. I am doing this to get in shape to further my dancing career."



Julie Frees  
news reporter  
Nutley

"My spring resolution is to pursue my career in the media. At the moment I am still attending school, so that I am only able to work on my reporting career part time. This May I hope to start full time at a major news station."



Jill Noblett  
reporter  
Bloomfield

"My spring resolution is to save enough money to make my dream of going to Europe a reality. My god mother lives in France and she has asked me to come stay with her for the summer. I need enough money to pay for my air fare."



Scott Greenberg  
camera man  
Belleville

"My spring resolution is to fix up my car. I was in a bad accident and smashed up the whole front of my car. I am planning to take a lot of long weekends at the shore this summer and if my car isn't fixed I won't be able to go."

# Instrument demonstration set for children

Members of the Nutley Civic Symphony and the Belleville High School Orchestra will demonstrate a variety of musical instruments at "Meet the Members of an Orchestra," a special children's program, Monday, April 22, at 7 p.m. in the newly-renovated Children's Room.

Orchestra members will be presenting and playing various instruments, including the oboe, harp, cello, trombone and bass clarinet.

Registration for the program is required. To register, call the library at 759-9200.



On a Tour - Senator Carmen A. Orechio (D, Essex), right, recently went on a tour of the Cerebral Palsy Center in Belleville with Eddie Moore, director of the state's Division of Mental Retardation, and Phyllis Burgess, the center's executive director.

# Funds appropriated for center

Senate President Carmen Orechio (D-30) has introduced legislation appropriating \$276,000 to the Cerebral Palsy Center of Essex and West Hudson in Belleville.

The funds will be used for needed repairs and deferred maintenance on the center's facilities.

Programs at the center emphasize early care for the multiple physically handicap-

ped. Facilities for severely involved persons in need of school placement, prevocational training, and adult services are also provided.

The center currently serves 450 clients and their families.

"Since its creation in 1946, the center has assisted more than 3,500 children, teenagers, young adults, and adults in need of its services," said Senator Orechio. "Their comprehensive

programs provide continuous aid to the handicapped residents in our area."

Orechio said he recently visited the center with Eddie Moore, director of the state's Division of Mental Retardation, and discussed the center's renovation plans with its Executive Director Phyllis Burgess and Board of Trustee member Al Zobel.

# Middle School library schedules trivia contest for parents, teachers

To focus attention on National Library Week (April 14-20), the Belleville Middle School Library will be running a trivia contest for middle school students, parents, teachers and staff.

A copy of the quiz may be picked up in the middle school library. The deadline for completed entries is Friday, April 18, at 3 p.m.

The first correct entry submitted will win a grand prize of a credit card-sized Walkman radio, donated by the Belleville Middle School Home and School Association.

Additional prizes will be awarded to the next 10 correct entries.

Entries to the questions may be found in reference sources in the library. Sondra Lowy, middle school librarian, said.

Questions for the trivia quiz are as follows:

1. The "Amityville Horror" took place in a haunted house in what geographical area of the United States?
2. In what country would you find a kiwi bird?
3. Which world nation is closest to the United States without touching its borders?
4. Who is the "wolf man" in "Mom, the Wolfman and Me"?
5. There were 21 Atlantic hurricanes during the past year (1984). What were the names of the first and last ones?
6. What is the real name of Madonna? Of Prince?
7. Who was the American League's most valuable player in 1984?

# Mario Silvestri has been named to dean's list at Kent State

Mario Silvestri, son of Mr. and Mrs. Carmine Silvestri of 46 Eugene Place, has been named to the dean's list at Kent State University, Kent, Ohio, for the first semester. His grade point average was 4.0.

8. Why would an Eskimo never eat a penguin, even if he were starving?

9. What is the only word in the English language that contains three consecutive double letters?

10. Into what is the game of horseshoes divided?

11. Who was the only New Jersey born president of the United States?

12. What do the following have in common: hod, skuttle, briefcase?

13. Who was Clara Maass?

14. Who said, "Some days you

win, some days you lose, and some days it rains?"

15. What does the double zero signify in James Bond's number 007?

16. Name the five Marx brothers.

17. What is the pen name of William Sydney Porter?

18. Who has the record for the most fumbles (seven) in a pro-football game?

19. Who were the first three men to sign the Declaration of Independence?

20. What does Mardi Gras mean?

# Caruso spending semester at university in Australia

Dana M. Caruso of Belleville, a home economics major at Montclair State College, is currently spending the spring semester studying at the University of Wollongong in Australia.

The program works in conjunction with the New Jersey State Council for International Education.

Students in the program must have indicated academic success with grade point averages of 3.0, as well as being recommended by Montclair State faculty members. Participants earn credits while being able to choose from the countries of Australia, Denmark, England and Israel.

"The program enables the student to use the world as a learning laboratory," said Dr. Curtis Jackson, coordinator of

the Intra-Collegiate Academic Program. "Most students appreciate their won backgrounds in the United States after spending a semester abroad."

**TOWNE DELICATESSEN & CATERERS**  
650 JORALEMON ST. BELLEVILLE N.J.  
751-3935

Week of April 11th thru April 15th

Proudly Presents  
**THE DELI SPECIALS**  
STARRING

1 lb. BREAST OF TURKEY \$3.48	1/2 lb. SLICING PEPPERONI \$1.63
1/2 lb. SLICING PROVOLONE \$1.48	1/2 lb. HORMEL HARD SALAMI \$1.83

Residential - Industrial - Commercial  
Catering  
Join Our Free Sandwich Club  
Member of Belleville Chamber of Commerce

# DECISION TIME

# IRA

# OR THE

# IRS

Open an Individual Retirement Account (IRA) at Nutley Savings & Loan on or before April 15, 1985 and give yourself a break.

Plan for your future financial needs while saving money now with a substantial deduction on your 1984 Federal Tax Return. The money you deposit in your IRA account is tax deductible up to \$2,000 a year and even more if you're married—\$2,250 if your spouse doesn't work and \$4,000 for working couples.

And remember, you pay no taxes on your deposits or on the interest you earn until you withdraw the funds at retirement, when you're likely to be in a lower tax bracket.

We have a variety of Individual Retirement Accounts paying high market interest rates. So don't delay. Interest is paid from the day of deposit.

# Getting a break on your taxes.

# It's as easy as IRA.

Federal regulations require a substantial interest penalty for withdrawal from certificates before maturity. Withdrawals from an IRA plan before age 59½ are subject to tax penalty and are taxable as ordinary income in the year of withdrawal.



# Nutley Savings

AND LOAN ASSOCIATION

MAIN OFFICE:  
371 Franklin Avenue, Nutley, N.J. 07110 • Phone: 661-3200  
BRANCH OFFICE:  
221 Washington Street, Newark, N.J. 07102 • Phone: 623-7090

**Your Movie Rental Store For '85**

NO CLUBS, NO MEMBERSHIP FEE

**NOW SHOWING!**

GONE WITH THE WIND  
WOMAN IN RED  
LITTLE DRUMMER GIRL  
SUPERGIRL  
IRRECONCILABLE DIFFERENCES  
EVIL THAT MEN DO  
BACHELOR PARTY  
CRIMES OF PASSION  
REVENGE OF THE NERDS  
STAR TREK III  
ONCE UPON A TIME IN AMERICA

WEEKDAY SPECIAL  
3 Tapes for 2 Days... \$9

Rent any Tape  
Tues.-Thurs. ... \$1.89

All Ratings G-XXX  
• VHS Rent and Repair: VCRS  
• Over 1500 Movies  
• Videotaping For All Occasions

Coming Soon: Oh God You Devil, Karate Kid, Dune, City Heat, Ninja 3, Terminator

**Instant Video**  
186 Main Avenue  
Passaic Park • 778-4751

Open Daily till 9 p.m.

# Events in the Area

## Class of 1965 planning reunion

Belleville High School class of 1965 will hold a reunion 7:30 p.m. Nov. 2 at The Chandelier, Belleville. For information, Elaine Perna, 68 Freeman St., Roseland, 07068 or Bob Turken, 76 Dumont Ave., Clifton, 07013.

## May reunion for class of 1935

Nutley High School's class of 1935 will hold a 50th reunion dinner May 4, June class call Fred Heidt, 667-4249. January class call Joe Laurite, 667-6199.

## Bloomfield '38 seek classmates

Bloomfield High School classes of January and June 1938 seek members for a 47th reunion 7 p.m. to midnight May 26 at Russian Hall, Singac.

Fee of \$35 includes cocktail hour, hot and cold buffet, open bar, dancing and prizes. Contact Palmer DeAngelis, 301 Central Ave., West Caldwell, 07006 (January class) and Mildred Tabor Loughlin, 174 Baldwin Place, Bloomfield, 07003 (June class.)

## Bloomfield health fair April 13

The Bloomfield Department of Health and Human Services and the Bloomfield College Division of Nursing are co-sponsoring a free health fair, "Bloomfield Health Expo '85," 10 a.m. to 4 p.m. April 13 in the gymnasium and science building at Bloomfield College.

The fair will offer a variety of health screenings, special events for children and demonstrations. Over 30 exhibits have already been confirmed.

## CPR course offered at Maass

Clara Maass Medical Center will offer a CPR certification course 6 to 9 p.m. April 16, 23, 30 and May 7. Participants must attend all four Tuesdays to receive certification. The course is a basic cardiac pulmonary resuscitation course designed for those with no prior training.

For information, call the Clara Maass Medical Center public relations department at 450-2267 from 9 a.m. to 4 p.m.

## 1935 classes planning reunion

Bloomfield Classes of January and June 1935 are planning a 50th reunion this September.

For information, write to Edith Cool, 28 Baldwin Place, Bloomfield, N.J., 07003 or call 743-0364.

## Chinese auction at Elks lodge

Bloomfield Elks Lodge 788 Abused Children's Committee will hold a Chinese auction 7:30 p.m. April 18 at Glen Ridge Middle School, Bloomfield and Glen Ridge avenues.

Refreshments will be served. Donation is \$3. For tickets, call Terry Smith II at 743-2386.

## Fashion show, dinner April 17

Nutley Family Service Bureau auxiliary will hold its 30th annual fashion show April 17 at Westmont Country Club, West Paterson. For invitations, call the bureau at 667-1884.

For the first time in the history of the event, it will be a dinner-fashion show with cocktail hour at 7 p.m. Fashion Highlights of Clifton and the Franklin Men's Shop will provide the clothes. Colley Ballou is fashion chairperson.

## St. Anthony's card party April 22

A "Spring Melody" card party is planned 7 p.m. April 22 by St. Anthony's Rosary Altar Society at St. Anthony's School, No. 7th Street, Belleville.

Donation is \$4.50 by advance sale only. There are no reserved seats and refreshments will be served. For tickets, call St. Anthony's rectory at 759-2882.

## Dinner, fashions May 16 at Fiesta

Radcliffe School PTA has planned its second annual dinner-fashion show 6:30 p.m. May 16 at The Fiesta, Woodridge.

Tickets at \$16 will be on sale 7 p.m. March 26 at Radcliffe School, 379 Bloomfield Ave., Nutley.

## Bloomfield art show opens May 4

The Bloomfield Art League's annual "Town Paints" will be held May 4 on the town green. Broad Street at the center. Entry fee is \$5 and work will be received 8 to 10 a.m. the day of the show. Cash and merchandise will be awarded.

Open to all artists, the art show will feature photography, sculpture, watercolors and oils etc., everything except crafts. Rain date is May 5.

## St. Mary's flea market May 18

St. Mary's School and Home Association will hold its spring indoor flea market 10 a.m. to 5 p.m. May 18 in the church hall.

Table rental is \$15. For information, call 235-1100 or 284-1186.

## Teen suicide seminar April 24

Montclair Community Hospital will sponsor a seminar on preventing teen suicide 4 to 6 p.m. April 24 at the Montclair Woman's Club, 82 Union St. To register, send a check for \$5 by April 15 to Montclair Community Hospital, Community Relations Office, 120 Harrison Ave., Montclair, 07042.

The two-hour program uses a film, lecture, discussion groups and self-evaluation exercises to help participants recognize early warning signs of teen suicide and learn how to help in crisis situations.

## Cards, fashions at Chandelier

The Home and School Association of James G. Shawyer School will present a card party fashion show dinner 6:30 p.m. April 12 at the Chandelier, Belleville.

For tickets at \$16, call Anita Campione at 759-2369. Children's fashions will be shown by Sherman's with hair styling by Total Image, both of Belleville.

## Chinese auction at White Eagle

Fairview Home and School Association will hold a Chinese auction 7 p.m. April 12 at White Eagle Manor, 44 Broughton Ave., Bloomfield.

For tickets at \$6, call Janet Montesano at 743-9721 or Linda DeLuca at 748-5247. No tickets will be sold at the door.

## Benefit softball game April 25

The Bloomfield PBA and FMBA will co-sponsor a benefit softball game at Pulaski Park 7:30 p.m. April 25. Tickets at \$1 apiece are available from township police officers and firefighters.

Proceeds will be used to offset the medical expenses of Ricky Piontek, a Sudden Infant Death Syndrome baby. Donations can also be sent to the police or fire departments, Municipal Plaza, Bloomfield, 07003, care Little Ricky Piontek.

## Lions eye, earmobile April 13

The Bloomfield Lions Club will sponsor an eye, earmobile 10 a.m. to 4 p.m. April 13 at Bloomfield College Gym, Liberty Street, for the purpose of offering free eye and ear screening for the visually handicapped and hearing impaired.

## Indoor flea market set April 20

St. Peter's Sports Association and St. Peter's Youth Group will hold an indoor flea market 10 a.m. to 4 p.m. April 20 at St. Peter's School, 152 William St., Belleville.

Table rental is \$12. For reservation forms, call Michele Kurash at 429-9361.

## Class of 1960 plans reunion

Bloomfield High School class of 1960 will hold its 25th reunion this year. For information, call Bloomfield High School or Sue Foran Sommesse at 338-3712.

## Macaroni, meatballs April 27

St. Peter's Boy Scouts Troop 375 will sponsor its second annual macaroni and meatball dinner 6:30 p.m. April 27 at St. Peter's cafeteria, 152 William St., Belleville.

Adults are \$5, children under five are free. Call Rosemarie at 751-4595, Carmela at 759-1467 or Patty at 484-8458 for tickets and information.

## Plant workshop planned May 1

A plant workshop, a "Green Thumb Get-Together," will be held 1 p.m. May 1 at the Bloomfield Civic Center, 84 Broad St.

Successful plant-growing, inside and outside, will be discussed. Gardeners are invited to share their knowledge and experience and learn from others. For more information, call the Bloomfield Division of Human Services at 743-4400, ext. 254.

## Washington trip set for May

The Bloomfield Knights of Columbus and Columbietes are planning a three-day trip to Washington, D.C. May 3, 4 and 5. Fee of \$95 per person, double occupancy, includes bus transportation, sightseeing and two nights lodging.

Reservations are limited. Call Rose Ruffalo at 743-8688.

## New Beginning dance April 12

A New Beginning, a club for singles 29 to 49, is sponsoring an April Fool's dance 9 p.m. April 12 in the community room of Nutley Savings and Loan, 571 Franklin Ave.

DJ music by Aerodynamics. Light refreshments are included. Admission is \$5. For further information, call 661-3357.

## Melillo testimonial dinner set

Bloomfield Fire Chief Robert G. Melillo, a 24-year member of the department, will be honored May 4 at a testimonial dinner dance at the White Eagle Manor, 41 Broughton Ave.

A cocktail hour will be held 7 to 8 p.m. with dinner following and an open bar continues to 1 a.m. Tickets at \$30 per person must be paid by April 26. Limited reservations for tables of 10 are on a first come, first served basis. Call 743-4400, exts. 255, 256 9 a.m. to 4 p.m. Monday through Friday.

Checks, made payable to the Robert G. Melillo Testimonial Committee can be mailed to fire headquarters at 375 Franklin St.

## Fashion show, lunch April 17

"I'll Remember April" is the theme of this year's fundraising luncheon and fashion show sponsored by the Montclair Community Hospital auxiliary. The event is scheduled for noon, April 17 at the Friar Tuck Inn, Cedar Grove.

Tickets at \$17 are tax deductible. For reservations or information, call Marge Sagesse at 743-6060.

A fashion show by Caren Charles of Livingston will feature auxilian models.

## Sisters to be honored May 1

The Sisters of Charity of St. Mary's Parish will be honored 7 p.m. May 1 at a dinner at the Palace Restaurant, Kings Court, Lyndhurst. Tickets at \$15 may be purchased at the rectory or by calling 751-4352 or 667-0470.

Present and former members of the parish and community as well as alumni of St. Mary's School and former teachers and priests who have served in the parish are invited. The dinner will commemorate the 125th anniversary of the founding of the Sisters of Charity of St. Elizabeth.

## St. Mary's registering students

St. Mary's Church, Nutley, will register students for religious education classes for the 1985-86 school term April 15 through May 15. Classes are held Sunday mornings 9 to 10:15 a.m. for grades one through eight. The school term runs from September through May.

To register a child or for further information, contact the religious education office at 667-8239 Monday through Friday 9 a.m. to 3 p.m.

## Roche retirees meet April 13

The Roche Retiree Club will meet 1:30 p.m. April 13 in the Hoffman-LaRoche Auditorium, Building 76, Nutley.

A sing along will follow the meeting. Refreshments will be served in the cafeteria.

## Benefit fashion show April 25

A fashion show to benefit the American Cancer Society will be held 6 p.m. April 25 at Rosanna's Figure Salon, 117 Bloomfield Ave., Bloomfield. It is hosted by Liza's Fashion Inc., Upper Montclair.

There is no admission charge and refreshments will be served.

## Rummage sale planned April 20

The Ladies Circle of Brookdale Reformed Church, 10 Bellevue Ave., Bloomfield, will hold a rummage sale 9 a.m. to 4 p.m. April 20. The church is located at the entrance to Brookdale Park.

Admission is free.

## Library's indoor art show April 20

Belleville Public Library will hold an indoor art show 9:30 a.m. to 1 p.m. April 20. To register, call 759-9200.

The show is open to adult professional and non-professional artists as well as students in grades one to 12.

## Multiple mothers benefit Saturday

The Essex County Mothers of Multiples will hold its sixth annual luncheon at noon April 13 at the Friar Tuck Inn, Cedar Grove. Proceeds will go to the Bergen County Cerebral Palsy center for treatments of a toddler.

The luncheon is open to the public. For information, call Mary Lee at 667-1334.

## Rummage sale May 4 at St. Paul's

St. Paul's Congregational Church, corner of Franklin Avenue and St. Paul's Place, Nutley, will hold its annual rummage sale 10 a.m. to 4 p.m. May 4 in the church's Falconer Hall.

Clothing for the family, furniture, bric-a-brac, linens, toys, records, household items and books will be offered for sale. A \$2 bag sale will be held 3 to 4 p.m.

## Trip for blind athletes planned

The Association of Blind Athletes of New Jersey is sponsoring a one-day trip to the Amish country in Pennsylvania May 11.

Donation of \$30 includes coffee, rolls etc. at Our Lady of Mount Carmel Church cafeteria prior to departure at 8 a.m., bus transportation, guided tour and supper at the Good and Plenty Restaurant. Free time will be allowed at the Farmers' Market.

Call Rose Ruffalo at 743-8688 for information.

## BACK PAIN NECK PAIN

IT COULD BE PINCHED NERVES

Pinched Nerves May Result In:

- HEADACHES
- LEG PAIN
- DIZZINESS
- NUMBNESS
- SHOULDER PAIN

WHY SUFFER NEEDLESSLY?

A SPINAL EXAMINATION CAN  
REVEAL IF YOU HAVE PINCHED NERVES

## Most Insurances Provide Coverage

Health (Major Medical 80%\*) Liability (Auto Accident 100%\*)  
Approved Workman's Compensation (on the job injury 100%\*)

\* Most provide coverage with satisfied deductible

## Bloomfield Chiropractic Center

858 Joralemon St. Belleville

759-3600

Dr. Gerald Mattia D.C.

Dr. Susan Guarino D.C.

## Where more Americans find a bigger refund

**H&R BLOCK**

Found Michael Monical

**\$394!**

## What can we find for you?

155 Franklin Ave., Nutley 235-1000  
125 Washington Ave., Belleville 751-3836  
18 Broad St., Bloomfield 743-0999

Open 9 a.m.-9 p.m. weekdays, 9-5 Sat. & Sun.  
Appointments Available - MasterCard & Visa Accepted

HOUSE CALLS AVAILABLE



We can't promise everyone this, but in a recent survey of customers who got refunds, 3 out of 4 believe they got bigger refunds than if they did their own taxes. 3 out of 4!

# Stork Club

## Mellisa A. Perna

A first child, a daughter, Mellisa Ann, was born to Mr. and Mrs. Frank J. Perna of Belleville March 1 at Clara Maass Medical Center. Birth weight was 7 pounds, 12 ounces.

Mrs. Perna is the former Deborah A. Van Houten, daughter of Mr. and Mrs. J. Van Houten of Belleville. Mrs. Perna, son of Mrs. Ruth A. Wilson of Roseland, is with Brendan Byrne Arena.

## Carly E. Franks

A first child, a daughter, Carly Elizabeth, was born to Mr. and Mrs. Matthew Franks of Belleville Jan. 23 at St. Joseph's Hospital. Birth weight was 9 pounds.

Mrs. Franks is the former Patricia Cunningham, daughter of Mr. and Mrs. Joseph Cunningham of Nutley. Mr. Franks, son of Mr. and Mrs. Nicholas Franks of Nutley, is a pharmaceutical representative with Stuart Pharmaceuticals.

## Avi B. Creditor

A second child, a son, Avi Benjamin, was born to Mr. and Mrs. Bruce Creditor of Sharon, Mass. Feb. 4 at Beth Israel Hospital, Boston, Mass. Birth weight was 8 pounds, 3 1/2 ounces. He joins Yael Nechama.

Mrs. Creditor is the former Susan Schonberg, daughter of Mr. and Mrs. Rudolf Schonberg of Brookline, Mass. Mr. Creditor is the son of Mr. and Mrs. Henry Creditor of Belleville.

## Adam P. Rainone

A first child, a son, Adam Patrick, was born to Mr. and Mrs. Peter T. Rainone of Belleville March 23 at Clara Maass Medical Center. Birth weight was 10 pounds.

Mrs. Rainone is the former Leann Fitzell, daughter of Mr.

and Mrs. Henry W. Fitzell of Pompton Plains. She is a word processor with Goodkind & O'Dea Inc., Clifton. Mr. Rainone, son of Mr. and Mrs. Peter P. Rainone of Belleville, is a senior media technician with Fairleigh Dickinson University, Rutherford.

## Michelle L. Sasso

A first child, a daughter, Michelle Lisa, was born to Mr. and Mrs. Fred Sasso of East Rutherford March 16 at Clara Maass Medical Center. Birth weight was 7 pounds, 3 ounces.

Mrs. Sasso is the former Lucille Giambattista, daughter of Mr. and Mrs. Thomas Giambattista of Belleville. She is a clerk with Popular Services Inc., Garfield. Mr. Sasso, son of Mrs. Sophie Sasso of Lodi, is a clerk with ShopRite of Hasbrouck Heights.

## Stephen J. Cozzarelli

A second child, a son, Stephen Joseph, was born to Mr. and Mrs. Frank Cozzarelli of Belleville March 24 at Clara Maass Medical Center. Birth weight was 7 pounds, 9 ounces. He joins Frank Peter, three.

Mrs. Cozzarelli is the former Karen Caputo, daughter of Mrs. Rose Caputo of Belleville. Mr. Cozzarelli, son of Mr. and Mrs. Frank Cozzarelli of Belleville, is a self-employed attorney.

## Dominick R. Richiuso

A first child, a son, Dominick Robert, was born to Mr. and Mrs. Joseph Richiuso of Belleville March 31 at Clara Maass Medical Center. Birth weight was 8 pounds, 4 ounces.

Mrs. Richiuso is the former Madelyn Germain, daughter of Robert Germain of Albertson, N.Y. Mr. Richiuso is a police officer in the Township of Belleville.



Maria Navarro - John DeBlasi

## Marie Julieta Navarro will wed John DeBlasi

Mr. and Mrs. Antonio Navarro of Belleville announce the engagement of their daughter, Marie Julieta, to John DeBlasi, son of Mr. and Mrs. John DeBlasi of Belleville.

The troth was made known at a dinner at Binghamton's River Boat, Edgewater.

Miss Navarro, a graduate of Belleville High School and Kean College of New Jersey, is with the State of New Jersey, Division of Youth and Family Services, Newark.

Mr. DeBlasi, also a Belleville High School alumnus, is with

Channel Home Centers, Belleville.

The wedding is planned for Oct. 26.

## Woman's Club garners awards at annual festival

The Woman's Club of Belleville attended the Eighth District Music and Drama Festival March 20 at the Jersey City Woman's Club.

An original musical presentation, "True Love," written and directed by Edith Richards, was staged. Soloists were Mary Kinloch, Helen Ferraro and Helen Todish. Chorus members and speakers included Ruth Hogan, Ann Chiavini, Angela Schoemer, Marion Hennessy and Lenore Keeney. Richards accompanied at the piano.

Three awards were presented by Marie Drake, a member of the Evening Membership Department of the Belleville Woman's Club and music chairman of the N.J. State Federation of Women's Clubs. Richards garnered an award as director and chairman of the drama department and the club received two awards, the district award for music and the district award for drama.

## Moonrakers meet April 9 at Hilton

The New Jersey Moonrakers, a club catering exclusively to tall and single adults, will meet April 9 at the Meadowlands Hilton, 2 Harmon Plaza, Secaucus. All ages welcome.

Height requirement for men is 6'2" or over and for women, 5'10" or over. Fee is \$3 per guest and free for members. Social and meeting hour is 8 to 10 p.m. For information, call Marj Jean at 968-2959 or write N.J. Moonrakers, P.O. Box 121, Paramus.

**The Choice of the People**

7 Days  
24 Hours  
Delicious  
Salad Bar!

Italian  
Specialties!  
Steaks & Chops

All baking done on premises • Homemade pastries  
Children's Menu Available  
Special Breakfast Menu: 6-11 a.m.  
Daily Businessman's Lunch: 11 a.m.-3 p.m. Served Bar Open 11 a.m.-10 p.m.  
ALA CARTE and COMPLETE DINNER MENU

**We're Always Open**  
**WILLIE'S**  
**DINER-RESTAURANT**

9 State St., Bloomfield Call 746-7414

## Parkinson support group meets April 20

The Parkinson Support Group of North Jersey will meet 10 a.m. April 20 in the private dining room of the Mountainside Hospital, Montclair. Dr. Lucien Cote will speak on "A Neurologist Looks at Parkinson's."

The Parkinson Support Group also sponsors a swimming exercise group each Wednesday, 11:30 a.m. to 12:30 p.m., at the Essex County Hospital Center, Cedar Grove. The bowling group meets on Thursdays at 11 a.m. at Bell Clair Lanes, Montclair. The exercise group meets every Monday at 10:30 a.m. at Congregational Beth Ahm in Verona.

Special parking for this meeting will be available in Mountainside's emergency department parking lot on Highland Avenue. For more information, contact the Parkinson Support Group of North Jersey, P.O. Box 84, Verona, 07044 or call Josephine Clement at 256-1011.



Honor student - Gina DeVito, daughter of Mr. and Mrs. Anthony DeVito of Belleville, graduated from Taylor Institute Jan. 31 after completing a course in computer programming. Named to the dean's list, she was listed in Who's Who Among Students in American High Schools last year.

**DR. S.P. FISCHER**  
Optometrist  
takes pleasure in announcing that  
**DR. THOMAS F. DORRITY JR.**  
Optometrist  
(member of the American Optometric Association  
Contact Lens Section)  
is now associated with him in the  
Practice of Optometry  
500 Washington Avenue  
Belleville, N.J. 07109  
For appointment call: 751-2992  
Eye Examinations Contact Lenses

**ARLINGTON JEWELERS**

**GOLD FEVER SALE**  
UP TO  
**SAVE 50%**  
ON OUR  
14K Gold & Diamond in store special items  
**SAVE 30%**  
on the remainder of our entire HUGE inventory  
of Fine Diamonds, Watches & 14K Gold Jewelry  
**WE DO EXPERT**

- JEWELRY & WATCH REPAIRS
- CUSTOM JEWELRY DESIGNING
- DIAMOND & STONE REMOUNTING
- PEARL & BEAD RESTRINGING
- DIAMOND & JEWELRY APPRAISALS
- EAR PIERCING BY APPOINTMENT

WATCH BATTERY REPLACEMENT (WHILE YOU WAIT IF POSSIBLE)

All at low, low sensible prices  
JEWELRY REPAIRS DONE WHILE YOU WAIT IF POSSIBLE  
Jeweler on premises

**ARLINGTON JEWELERS**

Main Store: 36 Ridge Rd. North Arlington • 998-5306  
Branch Store: 261 Franklin Ave. Nutley • 661-1558  
Store Hrs.: Mon., Wed. & Sat. 10-6; Thurs. & Fri. 10-8; Closed Tues.

**MEAT & CHICKEN**  
**CO-OP**  
The Dollar Stretcher

Split Chicken Breasts <b>99¢</b>	Filet Mignon <b>\$1.99</b> lb.
Sirloin & Shell Steaks <b>\$1.99</b>	Pork Chops Combo <b>\$1.39</b> lb.
Legs w/Back or Thighs <b>49¢</b>	Ground Chuck <b>\$1.49</b> lb.
Wings Drums <b>59¢</b> lb.	Chicken Cutlets <b>\$1.99</b> lb.

**Full Line of Lamb and Veal**

**FREE** 1 Dozen Extra Large EGGS With This Coupon

Open Mon. thru Fri. 8-6  
Sat. 8:00-4 - Sun. 9-1  
Parkway to Hazel St. Exit go to Crooks Ave. make right down to tracks make left 4 blocks on left

235 W. Railway Ave.  
Paterson 881-8900

**INCOME TAX**

Returns Prepared Professionally In My Office

CALL **450-9710**

**Sir Speedy**  
Printing Centers  
THE INSTANT PRINTING PROFESSIONALS  
QUALITY PRINTING  
FAST AND PROFESSIONAL  
Colored Inks and Paper in Stock

SERVICE  
Free Pick-Up and Delivery  
601 Bloomfield Ave.  
Bloomfield, N.J.  
748-8113

**FANTASTIC INCOME OPPORTUNITY AVAILABLE TO YOU NOW**

EARN **\$200-\$500** PLUS A WEEK  
PART TIME  
And Even More Full Time!

UNBELIEVABLE BUT TRUE  
WORK OUT OF YOUR HOME  
NO EXPERIENCE NECESSARY  
WE'LL TRAIN YOU AT NO COST  
PRACTICALLY NO MONEY NEEDED

**TO GET STARTED**  
**CALL 772-8253**

# Here's just a sample of what you'll find in the New Price Finder for Specials.

U.S.D.A. Choice Beef Loin  
**Sirloin Steak**  
Full Cut with Tenderloin Lb.  
**1.99**

Assorted Flavors  
**Louis Sherry Ice Cream**  
Half Gal. Cont.  
**1.99**

Gov't. Grade A - Fresh  
**Perdue Chickens**  
Whole Lb.  
**59¢**

Plain or Flavors  
**Axelrod Cottage Cheese**  
1-Lb. Cont.  
**89¢**

## Grand Union Price Finder for Specials



Contains All the Specials in the Store.  
Look for the Red Dots on the shelf.



**Super GRAND UNION Coupon**  
Prints  
**Vanity Fair Towels**  
One 100-Sheet Roll  
**29¢**  
No Minimum Purchase Required With This Coupon.  
Good Apr. 7 Thru Apr. 13. Limit One Coupon Per Customer.

**Super GRAND UNION Coupon**  
Regular or Country Style - Frozen  
**Minute Maid Orange Juice**  
One 6-oz. Can  
**49¢**  
No Minimum Purchase Required With This Coupon.  
Good Apr. 7 Thru Apr. 13. Limit One Coupon Per Customer.

Assorted Flavors  
**Hawaiian Punch**  
1-Qt. 14-oz. Can  
**68¢**

Solid White - In Oil or Water  
**Star-Kist Tuna**  
6 1/2-oz. Can  
**99¢**

### THE BUTCHER BLOCK

U.S.D.A. Choice Beef Loin  
**Porterhouse T-Bone Steak**  
Lb.  
**2.99**

U.S.D.A. Choice Fresh American  
**Shoulder Lamb Chops**  
Blade Bone Lb.  
**1.59**

**Family Pack Savings**  
SAVE UP TO 10% OFF 3-PACKS OR MORE.  
**Pork Chops** 1.49  
Combo: Loin Rib End & Center Cut Chops Lb.  
**Chuck Cubed** 2.19  
U.S.D.A. Choice - Boneless Beef Steak Lb.  
**Chuck for Stew** 1.89  
U.S.D.A. Choice - Boneless Beef Lb.  
**Corned Beef** 99¢  
Crown - U.S.D.A. Choice Brisket & Point Cut Lb.

**THE CORNER DELI**  
DELICIOUS WITH SERVICE DELI  
**Hard Salami** 1.79  
Armour 1877 Half Lb.  
**Cole Slaw** 69¢  
Made with Hellmann's Mayonnaise Lb.  
**Swiss Cheese** 1.89  
Finlandia Half Lb.

### PRODUCE

Black Ribier or  
**Emperor Red Grapes**  
Lb.  
**79¢**

**Fresh Spinach** 99¢  
Crisp - Nutritious 10-oz. Pkg.  
**Apple** 69¢  
Granny Smith 1 Lb.  
Crisp U.S. No. 1 2 1/4 Min.  
**Fresh Escarole** 49¢  
Crisp - or Chicory Lb.  
**Oranges** 5 For 99¢  
Florida - Juice Large 80 Size  
**Artichokes** 99¢  
Jumbo 24 Size Each

**DATE-LINE DAIRY**  
**Sour Cream** 99¢  
Sealtest 1-Pt. Cont.  
**Breyers Yogurt** 2 For 79¢  
Assorted Flavors 6-oz. Cans.  
**Grapefruit Juice** 1.79  
Grand Union - Chilled Half Gal. Btl.

**GRAND UNION Coupon**  
**10¢ Off**  
With This Coupon And Purchase Of One 4.75-oz. Bar - White or Pink  
**Dove Bath Soap**  
Coupon Good Apr. 7 Thru Apr. 13.  
Limit One Coupon Per Customer.

### GROCERIES

Oval Snack Crackers  
**Keebler Town House Crackers**  
12-oz. Pkg.  
**1.19**

**Hawaiian Punch** 69¢  
3-Pack - Assorted Flavors Three 8.45-oz. Pkgs.  
**Uncle Ben's Rice** 89¢  
Converted 1-Lb. Pkg.  
**Ragu** 1.39  
Trad. - Homestyle - Chunky Garden Var. 2-Lb. Jar  
**Corn** 2 For 89¢  
Whole Kernel or Cream Style 1-Lb. 1-oz. Cans.  
**Mazola Corn Oil** 1.79  
Polysaturated 1 Qt. Btl.

**THE BIG FREEZER**  
**Apple Juice** 79¢  
Seneca - Regular or Natural 12-oz. Can  
**Mixed Vegetables** 79¢  
Grand Union 1-Lb. 4-oz. Pkgs.  
**Lemonade** 2 For 79¢  
Regular or Pink or Limeade 6-oz. Cans.

Instant Flavor Crystals  
**Decaffeinated Folger's Coffee**  
8-oz. Jar  
**3.99**

**Snack Crackers** 1.19  
Nabisco - Asst. Varieties 7-oz. Pkg.  
**Pepsi or Pepsi Free** 1.09  
Regular or Diet 2-Ltr. Btl.  
**Bloody Mary Mix** 1.59  
Holland House - Smooth & Spicy 750-ml. Btl.  
**Post Grape Nuts** 2.49  
Breakfast Cereal 1-Lb. Pkg.  
**Bath Tissue** 1.99  
Vanity Fair Pkg. of 6 Rolls

**HEALTH & BEAUTY**  
**Colgate Toothpaste** 1.39  
with Pump Dispenser 4.9-oz. Pkg.  
**Stick Deodorant** 2.19  
Old Spice 3.75-oz. Pkg.  
**Milk of Magnesia** 1.99  
Phillips 12-oz. Cont.

FOR STORE INFORMATION  
CALL TOLL-FREE  
**1-800-221-1835**

# GRAND UNION

MOST GRAND UNIONS ARE  
**OPEN 24 HOURS**  
Check your local Grand Union for store hours.

Prices effective Sunday, Apr. 7 thru Saturday, Apr. 13 at all Grand Union stores in New Jersey, Rockland and Orange Counties. In order to assure a sufficient quantity of sale items for all our customers, we reserve the right to limit sales to 3 packages of any item unless otherwise noted. Not responsible for typographical errors. For store information call toll free, 1-800-221-1835.

# Religious Viewpoint

By The Rev. Robert Paul  
Grace Baptist Church

During a cruel and bloody war a commander took an oath, in the presence of his troops, that he would slaughter the entire population of a certain town, and in due course the blood hounds of war were let loose on the defenseless people.

Now it so happened that a fugitive, seeking for a shelter, saw a sight which was the indirect means of saving both his own life and the lives of others. He spied a number of soldiers as they broke into a house, the inmates of which they put to the sword. But on leaving it, they fastened up the place again, and one of them, dipping a cloth into a pool of blood, splashed it on the door as token to any who might follow of what had taken place inside.

Quick as his feet could carry him, the poor fugitive sped away to a large house in the center of the town, where a number of his friends were concealed, and breathlessly told them what he had seen. At once it flashed upon them how to act. A goat was in the yard. Immediately it was killed, and its blood sprinkled on the door.

Scarcely could they close the door again when a band of soldiers rushed into the street, and began to slay the people. But when they came to the blood-makred door they made no attempt to enter. The sword, so they thought, had already entered therein and performed its work. Thus, while the many around were slain, all within the blood-sprinkled door were saved.

If you had lived in that dangerous area, I am sure you would not have hesitated a moment to take your place behind the blood-marked door once you knew such a chance of escape existed. Yet how many people are refusing an even greater way of escape than this.

In the Bible God says, "The wages of sin is death" and "after the death the judgment." (Heb. 9.) We, because of our sins, are subject to this death penalty, not from our commander, but from a holy righteous God. But God has provided a way of escape for us by the blood of the Lord Jesus Christ on the cross. "In whom we have redemption through His blood, the forgiveness of sins, according to the riches of His grace." (Eph. 1:7.)

Even as these people were sheltered by the blood of the innocent victim on their door, so we also can be sheltered from the righteous wrath of God by the blood of Christ. "When I see the blood, I will pass over you." (Exodus 12.) As these poor fugitives took refuge behind the blood-marked door, will you take refuge in the blood of Christ, your only way of escape?



Sharing Ideas - Luella Barclay and Gerald Fierst, actor-in-residence at the Belleville Public Library, will share recipe secrets in "The Happy Kitchen." This program is part of the series of activities for National Library Week (April 14-20) being celebrated at the library.

## Joe Minish reception, dinner will benefit diabetes group

The Friends of Joe Minish, a civic and charitable organization, is hosting a cocktail reception and dinner in honor of its standard bearer, former U.S. Congressman Joseph G. Minish Friday, April 26, at 6:30 p.m. at the Town and Campus Restaurant, West Orange.

Proceeds from the dinner will be donated to the Juvenile Diabetes Foundation headquartered in Livingston. Ticket price is \$40 per person. For information, call 371-2643.

The primary objective of the foundation is to raise funds to encourage and support diabetes research, dinner program chairman O. Vincent McNany said.

"We expect more than 800 people for this occasion," McNany said. "It's a great cause and an opportunity to pay our respects to Joe Minish who served the area with distinction while a member of the U.S. Congress."


Minish represented Belleville, Bloomfield and Nutley in the 11th Congressional District.



Joseph G. Minish

Trivia Fans

I BET YOU DIDN'T KNOW



Lou Luzzi

Brought to you By Bigelow Motors Chrysler Plymouth

Questions:

1. What American writer used Nick Adams as the narrator in his short stories?
2. How many horizontal rows of stars are there on the U.S. flag?
3. What fish's skin was once used commercially as sandpaper?
4. What two Scrabble Crossword Game letters have eight-point values?
5. What is the man holding in the painting American Gothic?
6. What was the predecessor to the Central Intelligence Agency?
7. What was Winston Churchill's wife's name?
8. What's the oldest public park in the U.S.?

Answers:

1. Ernest Hemingway
2. Nine
3. The shark's
4. J and X
5. A pitchfork
6. The Office of Strategic Services
7. Clementine
8. Boston Common

**Bigelow Motors**

Chrysler Plymouth

50 Washington Ave. Belleville 759-4220

## 'The Happy Kitchen' opens April 19 at Belleville library

The Friends of the Belleville Public Library will present a special National Library Week program, "The Happy Kitchen," at the Belleville Public Library, 221 Washington Ave., Friday, April 19, 7:30 p.m.

Two generations exchange the secrets of 40 years in the hearthstone kitchen when Luella Barclay and Gerald Fierst meet in "The Happy Kitchen," demonstrating unique recipes and entertaining tips on fitness and nutrition for a trimmer, more energetic self.

Fierst, an actor, teacher and lecturer, will be the library's actor-in-residence for National Library Week.

Barclay brings a lifetime of fitness and a commitment to wholesome cuisine in this production. Raised on an Idaho farm she was a librarian for 40 years prior to her retirement in 1973. She has been teaching Yoga and exercise to older people in New Jersey since 1973.

Refreshments and partial funding for this program will be provided by The Friends of the Belleville Public Library. Tickets for this program will be \$2. (\$1 for children under 12 and senior citizens). For information call the library at 759-9200.

**20th ANNIVERSARY CELEBRATION**

April 19-20-21


Starring  
**NELSON SARDELLI**

Dinner, Dancing & Merriment  
Special Menu  
2 Shows Sun., April 21  
Call Now for Reservations  
**622-6221**

**DON'S "21" RESTAURANT**

McCarter Highway & Bridge St., Newark  
**622-6221 • Ample Free Parking**

**ORTHODONTICS**



• Dental Insurance Welcome  
• Affordable Prices For Children and Adults

175 Franklin Ave. Nutley 667-6850  
(Free Consultation With This Ad)

## Register now for art show

Registration is being conducted for the Belleville Public Library's Indoor Art Show set for Saturday, April 20 from 9:30 a.m.-1 p.m. To register, call the library at 759-9200.

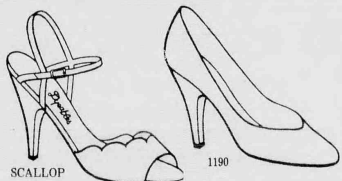
The show is open to adult professional and non-professional artists, as well as students in grades 1-12.

Book prizes, certificates, and ribbons will be awarded to the first, second, and third prize winners. Four "Best In Show" winners will receive \$10 gift certificates from Yudin's of Belleville. Book prizes will also be provided by Vita Vigorito, Golden Press, and the Friends of the Belleville Public Library.

Mrs. Richard Shafter, secretary of the library board of trustees is chairman of the art show.

**Dyeables**

The most exciting collection of dyeable shoes and handbags ever assembled, in stock.



7-10	5-11	5 1/2-10
N	M	W


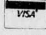
Custom Dyeing by our own Joe Zofrea  
Free of Charge

**Plaza Bootery**

Where Fit Is Always Guaranteed

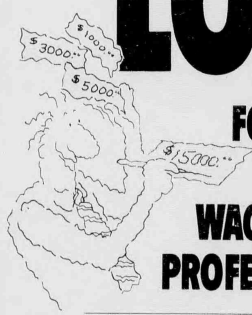
483 Franklin Ave. Nutley, N.J. 667-8964

Shoe Repairing Done On Premises  
Free Parking

**LOANS**

FOR RENTERS, HOMEOWNERS, WAGE EARNERS, PROFESSIONALS.


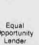


**AUTO LOANS, INSTALMENT LOANS, HOME IMPROVEMENT LOANS, HOME EQUITY, STUDENT LOANS, OVERDRAFT CHECKING.**

If you need a loan and quality, we want to make the loan. We're in the business. Our rates are competitive. Our staff is friendly. Stop in at your nearest Provident office for details.

**THE PROVIDENT SAVINGS BANK**

Offices throughout New Jersey • Member FDIC

**1ST NATIONWIDE NETWORK**

THERE'S A PROVIDENT OFFICE NEAR YOU IN NEW JERSEY:

Bayonne, Belleville, Bloomfield, Burlington Township, Cherry Hill, Collingswood, Dumont, Dunellen, East Brunswick, East Windsor, Green Brook, Jersey City, Leonia, Maple Shade, Mount Holly, Northvale, Ocean Township, Point Pleasant Beach, Red Bank, Teaneck, Union City, West New York, Westwood, Willingboro, Wall Township

**DRIVE A LITTLE -  
SAVE A LOT!**  
15¢ per mile  
with purchase

**OUT OF TOWN!  
CALL COLLECT**  
(201) 748-6902

# GRAND OPENING EXTRAVAGANZA

## CATTLEMAN'S FREEZER BEEF

WHEN ONLY THE BEST WILL DO

### SPRING TIME COOKOUT SPECIALS JUST SAY CHARGE IT!

NO MONEY DOWN, NO PAYMENT FOR 120 DAYS  
120 DAYS SAME AS CASH, NO INTEREST or FINANCE CHARGE

**FREE  
40 NEW YORK  
STRIP STEAKS**  
(Based on 2 oz. portions)  
To The First 20  
Customers Opening  
An Account  
(Purchase Required)

**FREE  
50 RIBEYE STEAKS**  
(Based on 2 oz. portions)  
to the FIRST 100 customers  
CALLING IN TODAY  
**748-6902**  
IF LINES ARE BUSY  
KEEP CALLING  
PURCHASE REQUIRED

Hurry folks!  
Offer good for  
one week only!



#### EXAMPLE ONLY USDA CHOICE SPECIAL #1

**300 LBS. FOR ONLY \$59<sup>50</sup>**  
per month  
for 4 months

#### USDA CHOICE & PRIME

- Sirloin steaks
- Porterhouse steaks
- T-Bone steaks
- Club Steaks
- Rib Steaks
- Bar-B-Q Ribs
- Filets
- Strip Steaks
- Rib Eye Steaks
- Sirloin Tip steaks
- Standing Rib Roast
- English Cut Roast

Ground Beef  
& more

**100 lbs.**

**YOU RECEIVE  
THIS AND THIS**

#### BONUS PACK

- 40 lbs. GRADE A FRYERS
- 10 lbs. LEAN PORK CHOPS
- 10 lbs. SLICED BACON
- 20 lbs. All Meat HOTDOGS
- 20 lbs. SAUSAGE

**ABSOLUTELY NO CHARGE**  
100 lbs. bonus  
with USDA  
choice special  
#1

200 lbs. loin, rib, plates & flanks at \$1.19  
lb. equal \$238.00 plus free 100 lb. bonus  
pack. Average weights 200 to 550 lbs.  
Includes sections 1c, 1b, 3e, 3f, 3g.

**USDA CHOICE & PRIME  
SPECIAL NO. 2**

**225 lbs. \$51<sup>56</sup>**

per payment  
for 4 payments

- Chuck steaks
- Strip steaks
- Sirloin Steaks
- Flank steaks
- Porterhouse Steaks
- Round Steaks
- Top Round Steaks
- Sirloin Tip Roast
- Ground Beef
- & more

**YIELD 3**

**EXAMPLE**  
160 lbs. at \$1.25  
equal \$206.25 plus  
free 60 lb. bonus  
pack. Average  
weights 165 to 400  
lbs. including sec-  
tions 1a, 1b, 3e, 3f,  
3g.

**PLUS  
THIS  
60 lb.  
BONUS  
USDA GRADE A**

- 20 lbs. chicken
- 20 lbs. sausage
- 15 lbs. hot dogs
- 15 lbs. picnic ham

Bonus No. 2 no charge  
with Special

**PLUS  
THIS  
25 lb.  
BONUS  
USDA GRADE A**

- 12 lbs. chicken
- 5 lbs. bacon
- 5 lbs. hot dogs
- 3 lbs. pork chops

Bonus No. 3 no charge  
with Special

**USDA CHOICE & PRIME  
SPECIAL NO. 3**

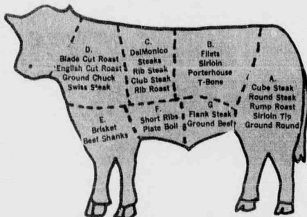
**175 lbs. \$40<sup>88</sup>**

per payment  
for 4 payments

- Chuck steaks
- Strip steaks
- Sirloin Steaks
- Flank steaks
- Porterhouse Steaks
- Round Steaks
- Top Round Steaks
- Sirloin Tip Roast
- Ground Beef
- & more

**YIELD 3**

**EXAMPLE**  
150 lb. forequarter  
at \$1.09 equals  
\$163.50 plus free 25  
lb. bonus pack.  
Average weights 150  
to 400 lbs. includes  
sections 1d, 1c, 3e,  
3f, 3g.



**FREE  
BARBECUE GRILL**

To the first 10 customers  
ordering 500 lbs. or more  
(purchase required)

**NOTICE!**  
Watch your beef cut and wrapped  
while you wait. Charge it! No  
money down. 120 days same as cash.

**FREE Introductory Offer  
FROZEN VEGETABLES**

- 10 LBS. Cauliflower
- 10 LBS. Carrots
- 10 LBS. Corn
- 10 LBS. Mixed Vegetables
- 10 LBS. Peas
- 10 LBS. Broccoli

Up to 100 lbs. With Beef Order  
Mix And Match With Any Bonus Pack

**EXECUTIVE SPECIALS  
USDA CHOICE OR PRIME**

50 lbs.  
ONLY **\$249<sup>50</sup>**

T-BONE, NEW YORK STRIPS, SIRLOINS, K.C. STRIPS, FILET  
MIGNONS, RIB EYES, DELMONICO, CLUB STEAK,  
CHATEAUBRIANDS.

AVERAGE WTS. 50 LBS. TO 125 LBS.

**U.S.D.A. CHOICE  
AND PRIME CUTS**

**\$2<sup>49</sup> lb. - \$6<sup>99</sup> lb.**

Pre-Trimmed  
Steak and Roast Orders  
Priced For Volume  
Buying

Information on buying in quantity.  
1. Small processing charge on all orders 20 lb.  
2. All beef USDA inspected and graded. You take no changes on tough or flavorless  
meat.  
3. All beef is weighed, cut and wrapped by experienced personnel to your  
specifications. All beef sold subject to gross hanging weight and subject to loss,  
and weights available at time of purchase.  
4. All orders include extra plates and flanks for ground beef and soup cuts.

**HOURS:**  
Mon. - Fri. 10 to 8 p.m.  
Sat. & Sun. 9 to 6 p.m.

All beef cut on premises by appointment only. All total dollar prices based on minimum  
weights. All orders include extra plates and flanks for ground beef and soup cuts. All beef  
sold by hanging weight subject to trim loss. All free items with purchase. Examples are  
examples only. Beef weights will vary as beef is not a manufactured item.

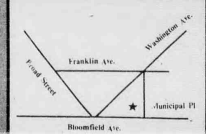
## CATTLEMAN'S FREEZER BEEF

When Only The Best Will Do

563 Bloomfield Ave., Bloomfield

748-6902

MEMBER  
BLOOMFIELD  
CHAMBER OF  
COMMERCE



# Belleville Times SPORTS

## Lady Bucs whip Immaculate Heart 18-5

All things considered, Carl Corino is very happy with his teams early round of success. The Belleville softball team has jumped out to a 4-1 record, and Corino feels his team is going to get better, as soon as the health of the team gets better.

The girls were in Paramus yesterday and will be in Ridgewood tomorrow afternoon for a 4 p.m. start. Next Monday, the girls will travel to Teaneck and next Friday, a big game with Paramus Catholic is slated for Clearmont Field, starting at 4 p.m.

The Lady Buccaneers opened the 1985 season with an impressive 11-3 victory over Queen of Peace. Belleville followed that game with a solid 8-4 win over Bayonne and an easy 17-1 romp against overmatched West Side of Newark. Last Saturday, in a game cable casted by TV-3, Belleville was downed by state power Union, 9-6. The sting of the defeat did not last long, however, as the girls came back

to whip Immaculate Heart, 18-5 last Monday.

"We're 4-1 and that's pretty good considering we've been hit by injuries early," Corino said. "I'm happy with the team, everyone is contributing and pulling for one another. (Karen) Fulda (pitcher) is starting to come around for us. She should put it together as the season progresses. Debbie (Paterno) has been good in the spots we've used her in and she should be a big help as the season moves on." Corino was happy with the teams four early victories, but he chose to speak about the Union game in particular. "It was one of those things. We gave them the game. I'm watching it now (last Monday night on TV-3) and I see that we made a lot of mistakes. On a positive note, we hit the ball well, we scored six solid runs. What hurt us in that game was our defense. We made some mental mistakes and it cost us. Union was in the same boat we were in from last year.

They lost an all state pitcher and catcher and are looking to rebuild. Debbie (Paterno) pitched real well in relief of Karen (Fulda) and that was a plus."

The girls were hampered by the loss of senior left fielder Liz Goldrick. She cracked an ankle in an early season game and will probably miss the remainder of the season. Junior shortstop Desiree Johanson, a girl considered vital to the teams success, came down with chicken pox following the Bayonne game and missed the last three games. Corino hopes to have her back in the lineup by tomorrow. Senior centerfielder Donna Brooks has been in the lineup, but she is hurting with a deep thigh bruise.

To make up for the loss of Goldrick, Corino has moved Sue Schuster from right to left field and has installed Sherri Sorrentino to the right field position. Sorrentino was the teams

(Continued on page 12)



**BASE HIT** — The Buc's Donna Brooks lines a base hit during a recent game. Brooks connected for two homers in Monday's victory over Immaculate Heart.

## Bucs lose 2, lack killer instinct

Belleville baseball coach Ralph La Conte feels the reason for his teams 0-1 start this spring is his teams lack of killer instincts. Last week, the Buccaneers took control early in two games, but let go late in the ball game and came away with no victories.

The Bucs looked to get back on the winning track against Paramus yesterday. Belleville will host Ridgewood tomorrow afternoon, starting at 4 p.m. On Saturday, the team will travel to Colonia for an 11 a.m. start and next Monday, will host Teaneck, starting at 4 p.m.

The Buccaneers tied Bergen Catholic in the season opener, 2-2 and bowed to Don Bosco, 6-3. Both contests were halted after six innings because of darkness and La Conte felt his team should have taken advantage of early opportunities. "This early in the season," he said, "the games rarely go seven innings, especially when it doesn't start until 4 p.m. We have to strike early and then add to that lead.

We can't let up after getting a lead because these games are too short to stop playing in."

Against Bergen Catholic, Belleville jumped out to a 2-0 lead in the fourth inning when James Caponi singled home David Long and Brian Tice. Bergen Catholic came back, scoring a run off of starting hurler Tom Reid in the fifth and tying the game in the sixth inning off reliever Allan Ruopp. Ruopp started strong, striking out two batters in the sixth, but he developed some control problems, walking two batters to force home the tying run. The game was then called after six full innings.

Reid pitched a strong game, striking out two and showing good control. Belleville had its opportunities to open the game up, but as La Conte later said, "we didn't take advantage of the opportunities presented us."

The Don Bosco game was the same scenario, but the end result was a defeat. After traveling 45 minutes, Belleville jumped out to a 2-0 lead after

one inning when Caponi drove in two runs with a single. Joe Mulaney had started with a single and went to second on a single by Long. John Aurimma walked to load the bases and two outs later, Caponi delivered the big hit. The senior outfielder has now driven in four of Belleville's five runs this year.

Mark Palumbo started on the hill for Belleville and was breezing through three innings with a no-hitter. In the fourth frame, the result was somewhat different. The Junior got in trouble by yielding consecutive singles and lost some of his control. Don Bosco took full advantage, pushing home three runs and taking a 3-2 lead entering the fifth inning.

Belleville rallied back, tying the game without benefit of a hit. Steve Mulhearn walked, went to second when Caponi reached on an error and scored on a sacrifice fly.

Don Bosco came back at

(Continued on page 12)



**THE GANG'S ALL HERE** — Coach Carl Corino discusses some softball strategy with his team during a recent practice on one of the warmer days of last week.

### Buc Shots

## 1975: The Bucs last winning track season

By Mike Lamberti

It was ten years ago that the Belleville track team posted its last winning record and the Belleville sports program showed a winning record for all its varsity sports. The 1975 Belleville cindermen finished the season with an 8-6 record, a season highlighted by victories over Big 10 rivals Kearny and Montclair and a near miss against arch rival Nutley.

The coach of that team, Rich Ruffalo, reminisced about the cindermen of '75 last week, recalling some of the outstanding performances turned in by that team. "We had some very talented runners back then," Ruffalo said. "It was a very well balanced team. We had some big wins in 1975 and some very exciting races."

1975, the year of Gerry Ford, the end of the Vietnam Era, the Mayaguez Incident, the beginning of the disco era, the B.T. Express, Abdel Anderson, the Big Red Machine and the Blackbirds singing a popular hit entitled, "walking in rhythm." It was the time for athletes like Brian Wood, Jerry Hykey, Mike Fortino and Nelson Seda to shine. Jim Beck was a top two mileer back then. The Big 10 was the elite conference ten years ago. The Boston Celtics were the team to beat in the NBA. (Some things never change.)

Greg Bunch, then a senior, was the top 100 yard man for the 75 cindermen. Bunch saved his best race for the state sectionals, running a 10.2 "Bunch was the only runner I ever saw with a kick in the 100," Ruffalo said. "In the state sectionals, he exploded at the end and took third place."

Bunch was also a top 200 man. I remember a race at Bloomfield that year when Bunch won both events in what was a very close meet. In the 440, Brian Wood, Jerry Hykey and John Matera stood out. Wood, the senior in the group, ran a personal best of 51.9 in the state sectionals, missing the school record by 4 seconds. "He came to me after the race apologizing," recalled Ruffalo. "He had blisters on his feet and it had to be the hottest day of the year. When I told him the time, he almost flipped out. He was very happy."

The 880 belonged to Mike Fortino. The team co captain never looked for the quiet way out. He was Mr. Controversial from the word go. His races were always exciting and his method of winning was never dull. He almost started a war with the Nutley runners after winning the 880 in the duel meet against the Maroon. In the Big 10 championships, he was nearly disqualified for bumping a runner at the wire. At all times, however, he was a class guy to be around and always found a way to get the most out of a runner. I remember being a junior on that team and running in the two mile during a meet with Newark East Side. Belleville had some fine two milers in Jim Beck and Doug Wamsley and usually my goal was to finish third in the race and help our team sweep the event. In the race against East Side, Fortino came up to me during the first of eight laps and said, "get these guys, Mike, they're the ones who beat you in cross country." Somehow that seemed to get me fired up even more for the race and I went on to my best time

ever on the home track.

Fortino's best time in the 880 was a 2:02, but his value to the team extended far beyond the final gun. In the mile run, Nelson Seda, a junior and senior co captain Walt Siubus formed a solid one-two punch. Seda ran a career best of 4:34.5 in the state sectionals of 1975. Kevin Bradley, a senior, ran the mile and sometimes the 880.

The two mile, as mentioned, was led by Beck and Wamsley. Jimmy ran a 10:08 in the Big 10 championships at Nutley on a warm day in early May. A week later, at the county championships in Montclair, Beck ran in the second heat of the two mile. He was with 22 other runners and got off to a slow start. Two laps in, he was dead last. By the beginning of the final lap, Beck had passed everyone, and had it not been for a late surge by Nutley's Ben Goldberg, Beck would have won the race. He settled for third place and a time of 10:20.

The hurdling events were led by Nick Semaca, Mark Romenelle and Kenny Drake. Drake was the leading scorer for the team, compiling over 100 points in the hurdling and jumping events. Semaca was the teams best high hurdler and Romenelle was always there to score some critical points.

In the high jump, Wood, Rich Filipek and junior Doug Jackson were all capable of breaking the 5-10 mark. In his senior year, Jackson placed second to Kelly Tripecka of Bloomfield in the high jump, clearing 6-1.

The long jump featured Matera, Jackson and Wood once again. Poor

Matera would jump in the low 19 foot range but couldn't score many points in the event because of the teams depth.

The pole vaulting event was led by Fran Morel, who eraged in the 12 foot range. Morel was an outstanding discus thrower, connecting for over 146 feet. Bob Feldman, the valedictorian for the class of '76, was a top sprinter and discus man. The shot put was led by Vito Guarino and Paul Haverick.

Topping it off was the mile relay team, which set a school record of 3:35.5 in the Big 10 championships, a mark that still exists today. Hhat team consisted of Hykey, Bunch, Fortino and Wood.

In 1975, the Bellbucs posted a big victory over Montclair, 68-54. The team also stopped perennial power Kearny, 76-46. Versus Nutley, the Bellbucs were defeated, 66-56 although Belleville did have a chance to tie the meet in the final event, the mile relay.

The biggest heartbreaker of 1975 was a two point loss to Bloomfield 62-60. Drake and Bunch were outstanding in the meet and Beck won the two mile. However, a sophomore named Tripecka won the high and long jumps and Bloomfield came away a winner. The memories of that team will be with me for years to come. I'm sure the athletes who represented Belleville during that time will also think back with pride to that spring of 1975. It was a very special time.

Speaking of Belleville track, Jimmy Beck is looking to arrange a reunion of the 1974 and 1975 cross country teams. If anyone is interested in attending or helping Jimmy arrange the

reunion, please contact him at 751-0800. The 1974 Belleville cross country team was 7-5, the last winning cross country squad at BHS to date.

The Belleville High School athlete of the week is Mike Siletti of the current track team. The senior had a marvelous week of action for the '85 cindermen and should be a standout performer this spring.

Congratulations to the Belleville softball team on a fine start this spring. The girls won their first three games before losing to Union last Saturday by a 9-6 count. Karen Fulda has pitched very well for Carl Corino and the team should be in good shape this year.

Baseball fans, it's that time of year. The long, cold winter is history and the grand old game is back for another summer. Can the Yankees and Mets stage a subway series for 1985? Some people think so. Tune in next week for a closer look.

Here is the answer to last weeks quiz. The question was, name the four teams in the 1977 NCAA Final Four and two players from that foursome who currently play in the NBA. The answer: North Carolina, UNLV, Marquette and UNC-Charlotte. Marquette won the title, beating North Carolina in Al McGuire's last game. Currently, Mike O'Koren of the Nets (North Carolina) and Cedric Maxwell of the Celtics (UNC-Charlotte) are active in the NBA.

For this week, name the finalists in the 1975 NBA championships. Also, name the team with the best record in the NBA that season and the ABA champion of 1975.

# Track team loses meets by close margins

Led by senior Mike Siletti, the Belleville track team gave a strong account of itself in two meets last week, but ended up losing by close margins.

The Buccaneers were in Eastside last Tuesday and will be in Paramus this afternoon for a match with Paramus Catholic. Next Tuesday, the boys return home for a match with Montclair, starting at 4 p.m.

John Tosato's team lost its first two matches of the year to Bloomfield, 65-57 and West Orange, 79-48. In the Bloomfield match, Belleville had a chance to win entering the mile relay, but the Buccaneers were up to the task and won the last event. It did not, however, take away from the fine effort put forth by the Belleville runners.

Siletti was super in the Bengal race, winning the high and low hurdles in a time of 18.4

and 59.7 respectively. He also took second place in the 100 meter dash (12.6) and the high jump (5-4). Sophomore Craig Burden won the mile in a time of 4:59 and came back to place second in the two mile. Senior Robert Hutchinson was the first place finisher in the two mile (10:50) and was second in the mile. Nick Compitiano was second in both hurdling events. Freshman Chris Oese took third in the 800 meters with a time of 2:25. In the 400, Compitiano was second and Vince Trupia placed third.

Sophomore Loung La was second in the triple jump and long jump. Larry Boiscano, a senior, was third in both the discus and shot put.

"It was a good effort on our part," said Tosato. "The runners were very good. I was especially happy with Siletti and Compitiano. They showed good versatility."

Versus West Orange, Belleville lost, 79-48, but once more, Siletti was excellent. The senior won both hurdling events in times of 16.5 (high hurdles) and 59.8. He also took second place in the high jump.

Burden was second in the half mile with a time of 2:19 while

Oese was third. Burden won the mile in a time of 4:56.4. In the two mile, Hutchinson ran a personal best of 10:43 and came back with a strong mile run of 4:59. Hutchinson's effort in the two mile was good for first place and his mile time placed him second behind Burden.

Compitiano was second in the 400 low hurdles and 400 meter run. His time in the 400 meter run was an excellent 55.0. La was third in the long jump with a leap of 18-2 1/2, his all time best.

J.R. Di Vincenzo took third in the 200 meters and Joe Speer

was third in the 100 in a time of 11.9. Bill Huamani came in third in the two mile with a time of 11:28. Boiscano led the weight men with a second place showing in the discus (94-3), javelin (129-10) and shot put (33-1 1/2).

It was a good start for the Belleville cindermen. Tosato is optimistic that his club will break the win category a few times during the 1983 campaign. The Buccaneers have some good runners and if they continue to improve in the field events, the Bucs should be a good team this season.

## Softball team off to good start makes Corino a happy coach

Continued from page 11

designated hitter. Replacing "Sor" at the D.H. spot is freshman Jeanine Luzzi, a young lady that Corino is very high on.

On the offense, Cheri Tillman did a nice job in the Union game, connecting for three hits. Sophomore Laura Caruso smashed a homer and is starting to settle in behind the plate. The team also received good hitting from Trish Trautola and Sorrentino.

All in all, it's a pretty good start for a team that lost an all state battery in 1984, lost its left-fielder early this season and its

shortstop for a short period of time. Five games, four wins. Things could be a lot worst.

NOTES: Corino noted that the Union loss did not affect the NNJIL, nor the county rankings. Belleville and Union could face each other again, but that wouldn't come until the Group IV, Section II state playoffs in May. The teams have played in state tournament action in the past, with Union winning. Corino was also expecting a tough game with Paramus. Brooks, despite her injury, hitting the ball very well.

set. Villanova beat Georgetown, didn't they?"

Colucci is hoping the weather will warm up a bit as the season progresses. "We played in the snow against Glen Ridge and it showered against Kearny. Hopefully, it will get a little better as the month of May gets closer."

## Linksters pick up first victory of season against Kearny

The Belleville golf team found the course a little rough in the early going, bowing to Caldwell and Glen Ridge, before picking up the first victory of the '85 season against Kearny. Rocco Colucci's team is in Don Bosco this afternoon and hosts rugged Bergen Catholic next Monday, at Forest Hills, starting at 4 p.m. Bergen Catholic is the defending state champion and a school rich in golf tradition.

The Buccaneers, 1-2, lost to Caldwell, 195-206 and Glen Ridge, 217-250 last week. Last Monday, Belleville won its first, stopping Kearny, 183-184. "I expected a tough match with Glen Ridge," Colucci said. "They always have a good team. The Kearny match was a good win for us, because we face a tough schedule the next week or so."

Versus Kearny, Greg Simone led the way with a 42, followed by Anthony Palermo, a senior, with a 44. Brian De Furia finished with a 46. In the two losses to Glen Ridge and Caldwell, only Simone and De Furia were able to break the 50 mark, so Colucci had to be happy with the teams stronger performance against Kearny.

Against Bergen Catholic next week, Belleville will be facing an awesome squad. "They had 30 kids come out for the team," Colucci said. "Only 12 make the team and the cutoff for the roster is to shoot a 41 or better. If you can't hit a 41 with consistency there, you won't have a chance of making the team. We'll do the best we can, you never know, there could be an up-

## Baseball team starts season 0-1-1 loses early control of both games

Continued from page 11

Palumbo in the fifth, chasing the junior and taking advantage of reliever Jim Dunphy, who was wild. The Bergen County school came through with three more runs to take a 6-3 lead, an advantage they would not squander.

Belleville went quietly in the sixth and Don Bosco tallied a run in the bottom of the sixth. The inning did not finish, however, because of darkness and the game reverted to the last full inning.

La Conte was happy with the performance of Tice, who relieved Dunphy and kept Don Bosco somewhat at bay the rest of the way.

"Our offense is sputtering a little," La Conte said. "Our defense did well, we need some big hits and have to stay on top of teams. We can't play at their level, we have to play at our capabilities or we won't be too successful."

Last week was an example of the former.

## Rec dept. seeks coaches

The Belleville Recreation Department is seeking coaches for its boys' baseball and girls' softball leagues. Men or women interested in coaching a baseball team in the Peanut League for ages 8-9, Pee Wee League Softball League for ages 8-9, Junior League baseball for ages 10-12, Pigtail League softball for ages 10-13, Intermediate/Senior League baseball for ages 13-15 or in the Junior girls' softball

league for ages 13-15 are urged to contact the recreation department at 450-3422 as soon as possible.

Sportsmanship, basic skills and fun are the objectives of the leagues. Every player on each team who attends required practices will play in every game. Come volunteer your time and share your interest and knowledge with the youngsters in town.

### DENTALLY SPEAKING

By Drs. James D. Muglia and Paul N. De Maio

What is an abscess?

Inside every tooth there are nerves & blood vessels. They are used to form the tooth while it is growing inside the jaw when you are a child. When the tooth gets a large amount of decay and touches the nerve it then begins to die if the nerve is not removed from the inside of the tooth by root canal therapy.

If not removed the nerve begins to decompose or rot, creating a pressure inside the tooth. There is no place for the pressure to go except out the bottom which is called the apex. A small cyst develops. As this cyst, which is inside the bone, becomes larger more damage is being done to the surrounding area. If the cyst becomes so large that it breaks through the bone and into the gum and reaches the outside, it forms what looks like a small pimple. This is what is primarily called an abscess.

Dentally Speaking  
671 Franklin Avenue  
Nutley, N.J. 07110

### CAMEO OPTICS



380 Main St., Belleville  
Grand Union Shopping Center  
751-4600

Why Should You Pay Ol' Betsy Auto Repair  
\$18.00 to Inspect Your Car When You Can Have  
The State Inspection Station Do It For Free?

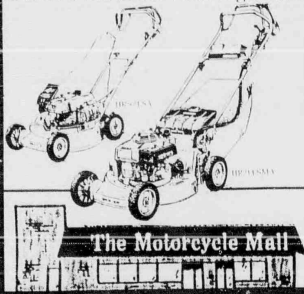
	Ol' Betsy Auto Repair	State of N.J. Inspection Station
COST	\$18.00 plus \$1.50 sticker	FREE
WAIT	NONE. You make an appt. to drop car off at your convenience.	Up to 3 hours
Experience	over 25 years	Unknown
Expertise	ASE Certification	Unknown
Service Included	Headlight adjustment Pull & wheels - check brakes Road test	No adjustment No service No road test

NOW DON'T YOU THINK \$18.00 IS REALLY A BARGAIN?

Ol' Betsy Auto Repair  
504 Washington Avenue, Belleville  
759-5561

## Trade in and up to a Honda.

Is the old mower going "pitter, shudder, bang?" Or doesn't it run at all? Want to get rid of it? **TRADE INS STARTING AT \$50**



### HONDA Power Equipment

For optimum performance and safety we recommend you read the owner's manual before operating the unit.  
© 1985 American Honda Motor Co., Inc.

165 WASHINGTON AVE.  
BELLEVILLE  
751-4545  
751-7727

The Motorcycle Mall

## FRIDAY THE 13<sup>TH</sup> THE FINAL CHAPTER



AVAILABLE ON VIDEOCASSETTE & VIDEODISC

© 1984 Paramount Pictures Corp.

AVAILABLE AT:

**GARY'S T.V. VIDEO  
HOME ENTERTAINMENT CENTER**  
388 Washington Avenue, Belleville  
759-2170

Hours: Monday through Friday  
9 AM - 8 PM

Saturday  
9 AM - 4 PM

# Variety of shows scheduled for OBC

**Thursday, April 11**  
 7-12 noon OBC Newshour  
 12-5 p.m. OBC Classified  
 5-9 p.m. OBC Newshour  
 9 p.m. Browning with Pat Diana  
 10 p.m. - 7 a.m. OBC Classified  
**Friday, April 12**  
 7-12 noon OBC Newshour  
 12-5 p.m. OBC Classified  
 5-9 p.m. OBC Newshour  
 10 p.m. - 7 a.m. OBC Classified  
**Saturday, April 13**  
 7-12 noon OBC Newshour  
 12-5 p.m. OBC Classified  
 5-9 p.m. OBC Newshour  
 9 p.m. - 9 a.m. OBC Classified  
**Sunday, April 14**  
 7 a.m. - 12 p.m. OBC Classified  
**Monday, April 15**  
 7-10 a.m. OBC Newshour  
 10 a.m. Ionia Pasick Program  
 10:30 a.m. - 4:30 p.m. OBC-TV Classified  
 4:30 p.m. Ionia Pasick Program  
 5 p.m. OBC-TV News for Nutley  
 5:15 p.m. OBC-TV News for Belleville  
 5:30 p.m. OBC-TV News for Bloomfield  
 5:45 p.m. OBC-TV News for Clifton/Passaic  
 6 p.m. OBC-TV News for Nutley  
 6:15 p.m. OBC-TV News for Belleville  
 6:30 p.m. OBC-TV News for Bloomfield  
 6:45 p.m. OBC-TV News for Clifton/Passaic  
 7 p.m. OBC-TV News for Nutley  
 7:15 p.m. OBC-TV News for Belleville  
 7:30 p.m. OBC-TV News for Bloomfield  
 7:45 p.m. OBC-TV News for Clifton/Passaic  
 8 p.m. OBC-TV News for Nutley  
 8:15 p.m. OBC-TV News for Belleville

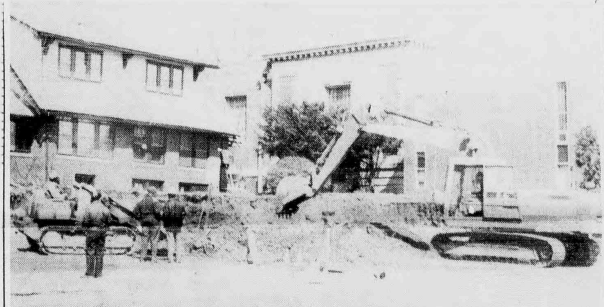
8:30 p.m. OBC-TV News for Bloomfield  
 8:45 p.m. OBC-TV News for Clifton/Passaic  
 9 p.m. Bill Gruver Forum  
 9:30 p.m. Belleville in Person with Howard Halpern  
 10 p.m. To be announced  
 11 p.m. OBC-TV News for Nutley  
 11:15 p.m. OBC-TV News for Belleville  
 11:30 p.m. OBC-TV News for Bloomfield  
 11:45 p.m. OBC-TV News for Clifton/Passaic  
**Tuesday, April 16**  
 7-10 a.m. OBC Newshour

6:45 p.m. OBC-TV News for Clifton/Passaic  
 7 p.m. OBC-TV News for Nutley  
 7:15 p.m. OBC-TV News for Belleville  
 7:30 p.m. OBC-TV News for Bloomfield  
 7:45 p.m. OBC-TV News for Clifton/Passaic  
 8 p.m. OBC-TV News for Nutley  
 8:15 p.m. OBC-TV News for Belleville  
 8:30 p.m. OBC-TV News for Bloomfield  
 8:45 p.m. OBC-TV News for Clifton/Passaic  
 9 p.m. Belleville in Person with Howard Halpern

with Howard Halpern  
 5 p.m. OBC-TV News for Nutley  
 5:15 p.m. OBC-TV News for Belleville  
 5:30 p.m. OBC-TV News for Bloomfield  
 5:45 p.m. OBC-TV News for Clifton/Passaic  
 6 p.m. OBC-TV News for Nutley  
 6:15 p.m. OBC-TV News for Belleville  
 6:30 p.m. OBC-TV News for Bloomfield  
 6:45 p.m. OBC-TV News for Clifton/Passaic  
 7 p.m. OBC-TV News for Nutley  
 7:15 p.m. OBC-TV News for Belleville  
 7:30 p.m. OBC-TV News for Bloomfield  
 7:45 p.m. OBC-TV News for Clifton/Passaic  
 8 p.m. OBC-TV News for Nutley  
 8:15 p.m. OBC-TV News for Belleville  
 8:30 p.m. OBC-TV News for Bloomfield  
 8:45 p.m. OBC-TV News for Clifton/Passaic  
 9 p.m. Nutley St. Patrick's Parade  
 11 p.m. OBC-TV News for Nutley  
 11:15 p.m. OBC-TV News for Belleville  
 11:30 p.m. OBC-TV News for Bloomfield  
 11:45 p.m. OBC-TV News for Clifton/Passaic  
**Wednesday, April 17**  
 7-10 a.m. OBC Newshour  
 Nutley News on the hour  
 Belleville News :15 past the hour  
 Bloomfield News :30 past the hour  
 Clifton/Passaic News :45 past the hour  
 10 a.m. Ionia Pasick Program  
 10:30 a.m. - 4:30 p.m. OBC-TV Classified  
 4:30 p.m. Bill Gruver's Forum  
 5 p.m. OBC-TV News for Nutley  
 5:15 p.m. OBC-TV News for Belleville  
 5:30 p.m. OBC-TV News for Bloomfield  
 5:45 p.m. OBC-TV News for Clifton/Passaic  
 6 p.m. OBC-TV News for Nutley  
 6:15 p.m. OBC-TV News for Belleville  
 6:30 p.m. OBC-TV News for Bloomfield

## OBC-TV-36

Nutley News on the hour  
 Belleville News :15 past the hour  
 Bloomfield News :30 past the hour  
 Clifton/Passaic News :45 past the hour  
 10 a.m. Ionia Pasick Program  
 10:30 a.m. - 4:30 p.m. OBC-TV Classified  
 4:30 p.m. Bill Gruver's Forum  
 5 p.m. OBC-TV News for Nutley  
 5:15 p.m. OBC-TV News for Belleville  
 5:30 p.m. OBC-TV News for Bloomfield  
 5:45 p.m. OBC-TV News for Clifton/Passaic  
 6 p.m. OBC-TV News for Nutley  
 6:15 p.m. OBC-TV News for Belleville  
 6:30 p.m. OBC-TV News for Bloomfield



**Taking Away the Land** - This bulldozer is removing the front lawn of a building on Washington Avenue to make room for a parking lot. The property, owned by Dr. Delfin Tunibay, a veterinarian, will become a cat and dog hospital. Photo by Michelle Jeannotte.



### BILL'S TONE'S

**Hot & Cold Catering**  
 For Large Or Small Parties  
 All Cooking On Premises  
 Featuring Our Old World Italian Recipes

**WE DELIVER**

**667-4877**

95 Harrison St., Nutley

Open  
 7:30 a.m. - 7 p.m. Weekdays  
 7:30 a.m. - 6 p.m. Weekends

# April Fools' DANCE

9 p.m., Friday, April 12th (SINGLES 29-49)

Community Room  
 Nutley Savings & Loan Building  
 371 Franklin Avenue  
 Nutley, NJ

Sponsored by: A New Beginning

Admission: \$5.00  
 Snacks and Beverages  
 DJ Music by Aerodynamics

For Further Information, Call: 661-3357

**COMING EVENTS:**

May 25  
USO Party

June 15  
Happy Birthday To Us!





**Planning for the New Jersey Boxing Hall of Fame Annual Dinner Dance** - (seated left to right) Patrick J. Conte, treasurer, Mario J. Centi, president, Ray Spencer, president veterans boxer club of NJ, standing (left) Rod Raftery, Lou Centi.

## Orechio calls for study of mental health system

State Senate President Carmen Orechio has called for the formation of a study commission to assess the status of the state's mental health system 10 years after New Jersey began discharging patients from its psychiatric hospitals to live on their own in their communities.

"We are going to attempt to evaluate what has happened since then, look at what has been done, and what the current problems are," Senator Orechio said during a recent conference in Princeton sponsored by the Mental Health Association of New Jersey.

Orechio said he would introduce legislation when the Senate reconvenes in early May to establish a "blue ribbon commission to assess the state's system for providing medical care and housing for the mentally ill, with particular emphasis upon those who have been discharged from the psychiatric hospitals to the community."

He said that at least half of the estimated 1,000 patients in the state psychiatric hospitals would be able to function in the community if there were adequate resources available. He said closing two of the four state facilities would free millions of dollars for community care support programs.

## Correction

The pictures of the P.B.A.'s 75th annual ball were taken by Kondreck Studios of Belleville. Credit for the pictures was not included in the picture page which appeared last week in The Belleville Times.

We are sorry for any inconvenience caused by this error.

**You've heard us on WCBS and WINS Radio**

**5 minutes via Rte. 21 Belleville Nutley**

**YOU can get the great deals on**

**HONDA PONTIAC or VOLVO**

that have brought hundreds of people from ALL OVER the Tri-State area

**City Motors**

River Drive, at Rte. 21, Passaic Park  
**777-1600**

### Auto Painting by Maaco

...with a paint service to fit every budget.

Free estimates on all bodywork.

SHOP HOURS: Mon. thru Fri. 8 am - 6 pm Sat. 10 am - 2 pm  
 Check the following locations for participating centers.

CONGRESSIONAL	Our economy enamel paint service	99 <sup>95</sup>
AMBASSADOR	Quality preparation & painting for those on a budget	169 <sup>95</sup>
PRESIDENTIAL	Our most popular value	249 <sup>95</sup>
SUPREME	High quality look with extended durability	349 <sup>95</sup>

**NUTLEY**  
 113 E. Centre St.  
 (behind 67 E. Centre St.)  
 235-0801

HOURS: Mon. thru Fri. 8:30-39; Sat. 9-1  
 MAACO Auto Painting & Bodyworks are independent franchisees of MAACO Enterprises  
 Prices and hours may vary

## Body by adidas, it's a great feeling!

ENTER THE **BODY by adidas** Caravan Sweepstakes


**WIN 1985 Dodge Caravan**  
 WITH \$500 WORTH OF adidas Sports Gear

**Mini Dodge Caravan**  
 Drivable, scaled-down version of the Grand Prize  
 DRAWING IN THIS STORE BETWEEN JULY 1 AND 5, 1985

**Free Gift** with every adidas purchase  
 Body by adidas Dodge Caravan Collection toy

**adidas**

**Rutherford Sporting Goods**  
 74 Park Avenue  
 Rutherford, NJ 07070  
 201-438-7869



**Umberto's Corner**

Dear Umberto,

My husband became bald so he combs the hair from the cranium to the front. I told him he looks funny and he tells me to "Keep quiet, you're the one that made me nervous which made me gain weight and lose my hair!" Umberto, two years ago he gained a lot of weight and then he went on his own diet. He lost weight after a year or more. Can you lose hair by getting nervous or by dieting? Also, are there other ways to comb his hair? Please answer.

The Lady with the Bald Husband

Dear Lady,

You can lose hair over getting nervous, but it will grow back. If you go on your own diet, without your physician's advice, you can lose your hair faster and it will not grow back, especially if baldness runs in the family.

Yes, there is a way to comb his hair differently. He can let his hair grow longer on one side of his head and comb it to the other side. I assure you it will not look funny.

To the Belleville Italian Americans I thank you for the delicious fruit basket you sent.

Yours, Umberto

**UMBERTO OF NAPLES**  
 547 New College & Culture  
 3400 University Ave.  
 340 University Extension  
 340 University Extension  
 FREE PARKING  
 10-11 PM  
 OPEN SUNDAYS

## Board swears in members and nominates officers

(Continued from page one)

"The passage of the budget is a great plus for the system and for the people. I believe we are showing the people we're doing good things in Belleville."

Linfante's nomination, unlike D'Agostino's, was not unanimous. The lone dissenting vote came from three-year member Gabe Nazzola.

"I believe the nomination of Phil Linfante was based on politics and not education," he said. "What people have perceived all along is true - there are too many politics on the board."

Nazzola said that social affiliations play a part in deciding who gets nominations and positions on the board.

"All along I have been the lone wolf on the board," he said. "I have no political backing and I don't go along to get along as they say. Because of this I get left out. Politics are alive and well on the board of education."

Nazzola, who is second senior member on the board, said that it is normal procedure for senior members to be nominated to the posts of president and vice president.

Nazzola, who was budget committee chairman, said he felt slighted that he was not nominated.

"I only ask one question," he said, "where was education. The

decision made was not in the interest of the school system."

In comments made about the budget, Schools Superintendent Michael Nardiello said that the passage of the budget was mainly due to the efforts of Nazzola.

"The budget won by a tremendous plurality," he said. "Being a native of Belleville, I know that getting the budget passed is like pulling teeth. Maybe we've changed that."

In addition to selecting a board president and vice president, Ernest Zoppi and Dr. Joseph Cappello were sworn in as three-year members.

In congratulating the new members, D'Agostino commented on Zoppi's business sense and the educational background of Cappello. He said that both would be assets to the board.

Cappello was also selected by the board as its representative and delegate to the New Jersey School Boards Association, while Linfante was selected to represent the board in the Essex County School Boards Association.

The board also chose Seymour Grossman as its representative on the Board of Directors of the Essex County Educational Services Commission. Cappello abstained from the voting because of his professional involvement with the commission.

The school board, which did not conduct any other major business, will meet Monday, April 15, at 7 p.m.



Taking the Oath - Ernest Zoppi, left, was sworn in as a three-year member to the Belleville Board of Education as his grandchildren look on. Zoppi had been a member on the board for the past year, replacing Charles Miele who resigned his post.



Rain, Rain, Go Away - That's what these people were saying last Saturday at the Belleville Optimist Club's annual Easter Egg Hunt in Branch Brook Park. The rain, however, which began shortly before the hunt's start, didn't seem to dampen the spirits of the children who participated.

## Roche sponsors student in government workshop

Hoffmann-La Roche Inc., the major health care company based in Nutley, and Roche Diagnostic Systems in Belleville are sponsoring David John Harrison, an 11th grade student from Belleville High School, who will participate in the 1985 Washington Workshops Congressional Seminar in Washington, D.C.

During the week of April 15, Harrison will travel to Washington, D.C. and join 125 other students from the United States and foreign countries who will participate in the seminar.

Besides maintaining a 3.5 grade point average, Harrison is a member of the Key Club, wrestling team and Foreign Language Club. In his spare time he enjoys fishing, archery, hiking and swimming. He is also active in scouting, baseball, basketball and soccer.

Hoffmann-La Roche Inc. and its various subsidiaries across the U.S. will sponsor a total of 18

11th grade students to the Washington Workshops. The citizen education scholarship program will include all tuition, room and board and travel expenses for each student.

The week-long Washington Workshop Congressional Seminar is an award-winning program in government study for high school students. During their stay in Washington, D.C., the students will meet with government leaders, White House staff and ambassadors, and participate in a model congress. In short, the students will gain insight and instruction in all phases of American national government and in particular, the concerns and activities of the United States Congress.

The 18 Roche-sponsored students will also attend a special luncheon on Capitol Hill where they will meet with members of the Senate and the House of Representatives from their respective districts.

## Sheriff D'Alessio to open campaign headquarters

Essex County Sheriff Thomas D'Alessio will open a campaign headquarters for his re-election effort Thursday, April 18 at 7:30 p.m. at 1 Town Hall Square, Nutley, next to the town hall.

Board of Freeholders President Jerome D. Greco, who will serve as D'Alessio's campaign manager, invites all friends and supporters of D'Alessio to join him in launching the re-election activities.

Campaign literature, bumper stickers and signs will be available that night. For more information, call 235-1830.

Greco described D'Alessio as "one of the finest sheriffs Essex County has ever had" and praised him for being an effective administrator and a compassionate leader.

D'Alessio, a career law enforcement professional with over 20 years of service in the field, was first elected Essex County Sheriff in 1982.



Sheriff Thomas D'Alessio

**HEALTH WISE**

If you neglect your automobile, it will soon break down and you will have to make major repairs or replace the car. If you neglect your body, little "warning signals" develop into serious health problems.

You cannot trade your body in for a newer model, so you really should watch for nature's signals that trouble lies ahead. These signals include pains in the back, legs or arms, a feeling of weakness in the muscles and headaches.

Chiropractic locates and corrects the underlying causes of these "early warning" signals. For an appointment, phone our office.

**DR. RALPH J. DI MAIO**  
Chiropractor  
625 Jorammon St. 751-8805  
Belleville

**SCAVONE'S**  
Bike Shop

PARTS • ACCESSORIES  
BMX/FREESTYLE SUPPLIES  
REPAIRS

We have the largest selection and lowest prices. Come see for yourself.

81 Washington Street  
Bloomfield, N.J.  
743-3790

**Pharmacy Footnotes**

**Vincent Cozzarelli**  
Reg. Ph.

**IBUPROFEN**

A new over-the-counter (OTC) drug for minor aches and pains has recently come onto the market. Sold under two trade names, the drug is a lower dosage strength at a widely used prescription drug called ibuprofen. The first new OTC painkiller in more than 25 years, ibuprofen may be used for the temporary relief of the minor aches and pains associated with the common cold, headache, toothache, muscular aches and backache. The OTC version is also labeled for relieving the minor pain of arthritis and menstrual cramps and for reducing fever. Be aware, however, that aspirin-sensitive people should also not take ibuprofen.

If you have any questions concerning the use of ibuprofen, ask your physician or our pharmacist at ROSSMORE PHARMACY, 338 Washington Ave., 759-1968, 759-1956. Your Doctor Knows Us! Your Doctor Trusts Us! Wheel chairs, walkers, crutches, canes and other convenient aids are handled. Greeting cards, cosmetics and other gift items are available for Mother's Day. Hours: Mon. 10pm daily, Sun 9pm-Sundays

**HANDY HINT:**  
It is important not to take ibuprofen during the last three months of pregnancy.

**Nutley Travel**

**THE REST IS HISTORY..**

800 BLOOMFIELD AVENUE

New Jersey 201 - 235-1234 NUTLEY, N.J. 07110 New York 212 - 227-0988

**Century 21**

FIRST CENTURY REAL ESTATE  
235-0440

Put Number 1 to work for you.

**VIVA LA NAILS**

- Manicures
- Pedicures
- Tips & Wraps
- Cosmetics
- Cosmetic Makeovers
- Painless Hair Removal

5 James St.  
Bloomfield, N.J.  
(corner of Broad St.)

Call for Appointment  
Phone 429-2994

**Reid's**  
EST. 1949  
DECORATING & UPHOLSTERING CO.

- Custom Made Drapes
- Vertical Blinds
- Mini Blinds
- Shades
- Foam Cushions
- Reupholstering and Repairs
- We Sell and Install Carpet
- Plastic Slipcovers
- Custom made fabric Slipcovers
- No Job Too Large Or Too Small

Commercial and Residential

**15% OFF Senior Citizen Discount**

With this ad

511 Bloomfield Ave.  
Montclair, N.J.

Offer Expires April 30, 1985

744-6644 or 627-5533

Parking in Rear Of Store  
Mastercard, Visa, AM. Ex.  
Mon.-Fri. 9-6, Sat. 9-4

**GUARANTEED TUNE-UP**

6 MONTHS/6,000 MILES  
AUTOMOTIVE SERVICE CENTER

485 Washington Ave.,  
Belleville

**751-5533**

OPEN: Mon.-Fri. 8 AM - 6 PM  
Sat. 8 AM - 5 PM

**Shocks, Brakes, Mufflers**

ALL OFFERS EXPIRE 5/15/85

**ELECTRONIC TUNE-UP**

6 & 8 CYL. REG. \$49<sup>99</sup> 4 CYL. REG. \$44<sup>99</sup>

6 & 8 CYL. CERTAIN MODELS EXCLUDED. INCL. PARTS & LABS.

**\$10.00 OFF**

SPECIAL WITH COUPON \$39<sup>88</sup> (6 & 8 CYL.) \$34<sup>88</sup> (4 CYL.)

OUR TUNE-UP INCLUDES REPLACEMENT WITH

- BRAND NAME SPARK PLUGS
- POINTS
- CONDENSER

WE SERVICE THESE PARTS AND REPLACE IF NEEDED:

- DISTRIBUTOR CAP & ROTOR
- FUEL FILTER
- PCV VALVE

THEN WE ALSO:

- ADJUST CARBURETOR
- ADJUST TIMING
- SCIENTIFIC ROAD TEST WITH DYNOMETER

TUNE-UP USUALLY TAKES 30 TO 45 MINUTES

6 MONTH/6,000 MILE GUARANTEE - WHICHEVER COMES FIRST

**SPECIALS**

**OIL CHANGE**

**FILTER & LUBE**

**\$16<sup>95</sup>**

**BRAKE SERVICE**

Fronts **\$59.95**  
Rears **\$54.95**  
Metallic Pads Extra  
Most Models

## John Lukowiak, 61, veteran post member

John G. Lukowiak, 61, of Bloomfield died March 31 in Mountsides Hospital, Montclair.

A Mass was offered April 3 in Sacred Heart Church following the funeral from the Murray-Quinn Funeral Home, Bloomfield.

Mr. Lukowiak was a machinist for the Van Vlaanderen Machine Co., Paterson, for 27 years, retiring last May. He was a Navy veteran of World War II and a member of the Veterans of Foreign Wars Post 711, Bloomfield, the American Legion Post 299, Belleville and the Poniatowski Association of Bloomfield.

Born in Belleville, he moved to Bloomfield 35 years ago.

Surviving are his wife,

Mildred; a daughter, Mrs. Lorraine Crum; two sons, Michael and Kenneth; a sister, Mrs. Clara Austin; a brother, Stephen and three grandchildren.

## Services held for F. Evans

Francis E. Evans of Toms River, formerly of Belleville, died March 25.

Services were held March 28 at George Van Tassel's Community Funeral Home, Bloomfield. Interment followed in Cresthaven Memorial Park.

Surviving are two nephews, John R. and Richard J. Cove and a niece, B. Ruth Dunscombe.

## Obituaries

## Blessing is offered for Assalone Esposito

A blessing for Assalone Esposito, 88, was offered April 5 in St. Peter's Church following the funeral from the Megaro (Belleville) Memorial Home. Mr. Esposito died March 31 in Clara Maass Medical Center.

An Army veteran of World War II, he has been a press operator with the Ronson Corp., Newark, for 30 years, retiring 27

years ago. Born in Italy, he lived in Newark before moving to Belleville 18 years ago.

Surviving are his wife, Antoinette; six daughters, Mrs. Anna Possumato, Mrs. Mary De John, the Misses Rose and Caroline, Mrs. Nicolina Sanfilippo and Mrs. Gloria Ellsworth and 11 grandchildren.

## Josephine Testa, at 68, was payroll supervisor

Mrs. Josephine Testa, 68, of Belleville died April 4 in the Clara Maass Medical Center, Belleville.

She was born Josephine Inzana in New York City and lived in Newark before moving to Belleville 20 years ago.

She was the supervisor of insurance and payroll for the Art Metal Corp. in Newark, where

she worked for 26 years. She was a member of the West Hudson Women of the Moose Chapter 1237 in Harrison.

Surviving are two sisters, Mrs. Mary Giarrusso and Mrs. Dorothy Jenkins.

A Mass was offered Tuesday in St. Anthony's Church, Belleville.



## Season House

217 Belleville Avenue  
Belleville  
450-0285

Specializing in Hunan, Szechan and Cantonese Cuisine

**FREE DELIVERY**  
**450-0285**

Mon.-Thurs. 4 PM-8:30 PM  
FRI. SAT. SUN. 4 PM-9 PM

OPEN 7 DAYS

**SHERIFF'S SALE**  
SUPERIOR COURT OF NEW JERSEY, ESSEX COUNTY, DOCKET NO. F-6000-84 RITA J. LONDELL and WILLIAM J. LONDELL JR., PLAINTIFFS vs. VERNAL I. MADDEN and BROADWAY BANK & TRUST CO., DEFENDANTS, Execution For Sale of Mortgaged Premises.  
By virtue of the above stated writ of Execution, to me directed, I shall expose for sale by Public Auction, in SHERIFF'S OFFICE, Essex County Court Building in Newark, on Tuesday, the 23rd day of April, at, one-thirty P.M., (Prevaling Time) all the following tract or parcel of land situate, lying and being in the Town of Irvington, in the County of Essex and State of New Jersey.

**BEGINNING** at the northeasterly corner of Augusta Street and May Street, thence running (1) Easterly along the Northernly line of May Street 38.58 feet thence (2) Northernly at right angles to May Street 100 feet, thence (3) Westerly and parallel with May Street 32.76 feet to the Easterly line of Augusta Street, thence (4) Southerly along said line 100.17 feet to the point and place of BEGINNING.

**BEING** known as Lot 21 in Block E on Map of Irving Park Realty Co., made by Frank T. Shepard, May, 1911.

**BENEFIT** the same premises conveyed to the Lender herein Rita J. Londell by Deed from Lena Ann Salodino, Widow, dated January 23, 1974 recorded January 25, 1974 in Book 4460, Page 430, of records for Essex County.

Said premises being commonly known as 85 May Street, Irvington, New Jersey.

The approximate amount of the Judgment to be satisfied by said sale is the sum of SIXTY ONE THOUSAND FOUR HUNDRED THIRTY FOUR DOLLARS AND NINETY FOUR CENTS (\$61,434.94), together with the costs of this sale.

The Sheriff reserves the right to adjourn the sale from time to time as provided by Law.

THOMAS J. D'ALESSIO, Sheriff  
Belleville, N.J. March 18, 1985  
No. 885-121  
Fee: \$75.04

**SHERIFF'S SALE**  
SUPERIOR COURT OF NEW JERSEY, LAW DIVISION, ESSEX COUNTY, DOCKET NOS. L-07633-84 & J76-85 ROBERT B. FISH and YEDA FISH, PLAINTIFFS vs. JOHN FREGAZZI, CHRISTINE FREGAZZI and MARK REAL ESTATE INVESTMENT CORPORATION, DEFENDANTS, Execution

By virtue of the above stated writ of Execution, to me directed, I shall expose for sale by Public Auction, in SHERIFF'S OFFICE, Essex County Court Building in Newark, on Tuesday, the 30th day of April, at, one-thirty P.M., (Prevaling Time) all the right, title and interest of the above named Defendant, Mark Real Estate Investment Corporation of and in and to all that tract or parcel of land and premises located in the City of East Orange, County of Essex and State of New Jersey, more particularly described as follows:

The Property includes: (a) the land; (b) all buildings that are or will be located on the land; (c) all fixtures that are now or, or will be, attached to the land or building(s) (for example: furniture, fixtures, and kitchen cabinets); (d) all condemnation awards and insurance proceeds relating to the land and building(s); and (e) all other rights, that I have, or will have, as owner of the Property. The legal description of the Property is:

**BEGINNING** in the westerly line of North Walnut Street 138 feet northerly from the intersection of the said westerly line of North Walnut Street and the northerly line of Williams Street; thence (1) North 57 degrees 11

minutes 30 seconds west 152.15 feet, thence (2) north 57 degrees 37 minutes west 48.55 feet, thence (3) north 37 degrees 37 minutes west 75.59 feet, thence (4) south 53 degrees 25 minutes east 200 feet to the said westerly line of North Walnut Street; thence (5) south 37 degrees 37 minutes east 12 feet to the point and place of BEGINNING.

**BEING** known as and by street #83 North Walnut Street in East Orange, New Jersey.

**BEING** ALSO KNOWN AND DESIGNATED AS Lot #2, Block #363.

The approximate amount of the Judgment to be satisfied by said sale is the sum of ONE HUNDRED FORTY-NINE THOUSAND TWO HUNDRED SIXTY-EIGHT DOLLARS AND FIFTY-SIX CENTS (\$149,268.56), together with the costs of this sale.

The Sheriff reserves the right to adjourn the sale from time to time as provided by Law.

THOMAS J. D'ALESSIO, Sheriff  
Belleville, N.J. March 25, 1985  
No. 885-130  
Fee: \$118.44

**RESOLUTION**  
BELLEVILLE PLANNING BOARD  
RESOLVED BY THE PLANNING BOARD OF THE TOWNSHIP OF BELLEVILLE, COUNTY OF ESSEX, STATE OF NEW JERSEY.

WHEREAS, an application has been submitted for a minor subdivision of property known as Lot 15 and 17 in Block 426, 190 Passaic Avenue, Lot 15 is located on the southeast side of Passaic Avenue between Emmet Street and Mitchell Street, Lot 17 is a corner lot located on the southwest corner at the intersection of Emmet Street and Passaic Avenue.

WHEREAS, Lot 15 is a rectangular shaped property having frontage of 26.50 feet on Passaic Avenue, lot depth of 65 feet and contains an area of 1722.5 square feet. There is an existing frame building on the lot used as a tavern. On October 2, 1984 the Zoning Board of Adjustment granted a variance for a 15-foot expansion of the existing building resulting in a reduction of the rear yard from 19 feet to 4 feet.

WHEREAS, Lot 17 is an L-shaped property having frontage of 33.87 feet on Passaic Avenue, side lot line of 113.69 feet on Emmet Street and contains an area of 5162.4 square feet. There is an existing two-story frame residential building on the lot along with a two-car underground garage having access onto Emmet Street.

WHEREAS, the applicant proposes to subdivide a rear portion of Lot 17 and add it to Lot 15. The section proposed for subdivision shuts the rear Lot 15 and has dimensions of 26 feet in width by 49.5 feet in depth and will contain an area of 1298.1 square feet. Lot 15 will have dimensions of 26.50 feet in width by 113.96 feet and will contain an area of 3019.4 square feet.

WHEREAS, the Board has determined that relief requested by the Applicant PASQUALE CURTO, can be granted without substantial detriment to the public good and without substantially impairing the intent and purpose of the site plan ordinance of the Township of Belleville, N.J.

IT IS THEREFORE, BE IT RESOLVED that the Planning Board of the Township of Belleville, New Jersey, on this 14th day of February 1985, grant the application to PASQUALE CURTO.

The Belleville Times  
Apr. 11, 1985  
Fee: \$26.79  
No. 885-138

**SHERIFF'S SALE**  
SUPERIOR (CHANCERY) COURT OF NEW JERSEY, CHANCERY DIVISION, ESSEX COUNTY, DOCKET NO. F-4615-84 FEDERAL NATIONAL MORTGAGE ASSOCIATION, a Corporation organized by an Act of Congress, PLAINTIFF vs. MRS. BETTERSON, husband of Inez Betterson, et al., DEFENDANTS, Execution For Sale of Mortgaged Premises.

By virtue of the above stated writ of Execution, to me directed, I shall expose for sale by Public Auction, in SHERIFF'S OFFICE, Essex County Court Building in Newark, on Tuesday, the 23rd day of April, at, one-thirty P.M., (Prevaling Time), Property to be sold is located in the City of East Orange, County of Essex and State of New Jersey.

Premises is known as: 8 Winans St.  
\* Atty's File #6598  
Tax Lot #24 Block #373

Approx. Dimensions: 35 x 110.10 (irreg. Nearest Cross Street: Williams Street 791.17)

A complete description can be found in the Essex County Register's Office.

The approximate amount of the Judgment to be satisfied by said sale is the sum of THIRTY THREE THOUSAND TWO HUNDRED TWENTY EIGHT DOLLARS AND NINETY NINE CENTS (\$31,228.99), together with the costs of this sale.

The Sheriff reserves the right to adjourn the sale from time to time as provided by Law.

THOMAS J. D'ALESSIO, Sheriff  
Edward Cosel, Attorney

The Belleville Times  
Mar. 28  
Apr. 4, 11, 18, 1985  
Fee: \$75.20  
No. 885-122

# Where To Dine

Big Screen TV Sports Channel  
Thursday is Seafood Night Sunday Brunch

**Rick's**  
Major Credit Cards Accepted  
Casual Dining In A Relaxed Atmosphere  
778-7100  
550 Allwood Rd. Circle, Clifton

**FOUR STAR**  
Lunch Served 11-3  
Dinner Served 5-10 Mon.-Thurs.  
5-11 Fri. & Sat.  
Snacks Served Till Midnight  
66 Mt. Prospect Ave.  
Clifton, N.J. 777-0253

**Armando Di Villa**  
RISTORANTE  
HOSTED BY ONOFRIO

**EXQUISITE ITALIAN CUISINE**  
Come and dine in our new exquisite beautifully remodeled surroundings.  
We'll cater to any size party. Call for your special occasion - wedding, bar mitzvah, birthday or anniversary.  
R.S.V.P. Required 667-8399  
800 Bloomfield Ave. Nutley, N.J.

**LEE'S** Hawaiian Islander  
Mon., Tues., Wed. 5-10 p.m.  
Smorgas - Luau  
All you can eat \$9.25  
768 Stuyvesant Ave. Lyndhurst 939-3777  
635 Lexington Ave. Clifton 478-1977

**Karpen's**

## KARPEN'S DELI-RESTAURANT

Karpen's Deli-Restaurant has been a popular gathering place for residents in the Passaic/Essex County area for the past 3½ years. Located at 1115 Bloomfield Ave., it is conveniently situated on the Clifton/Bloomfield-Nutley border.

Owners Hilda and Murray Karpen stress that, "everything is homemade — we buy nothing that we can make ourselves."

Karpen's is open 9 a.m.-8 p.m., 7 days a week, and serves breakfast, lunch and dinner.

Stop in for traditional breakfast favorites such as French toast, pancakes, cereal, eggs, or try a Karpen's special, such as the spectacular "club breakfast," or a fancy omelet with a variety of ingredients.

The menu offers a vast array of sandwiches, including their generous 3 decker combinations.

If you fancy some more substantial eats, Karpen's serves delicious Chef's specialties such as "Roast Brisket," and "Beef Flanken in the Pot."

Whether you're stopping in for a full meal or a deli snack, Karpen's Deli-Restaurant, 1115 Bloomfield Ave., Clifton 473-6408, has something for everyone's appetite.

**The FEEDBAG FAMILY SALOON**  
36 Broad St. Bloomfield (Bloomfield Center) 743-7208  
A feedbag is a pizza dough baked around fresh tomato sauce, cheese, onions, peppers, and your choice of over 20 of your favorite meat and fresh vegetable fillings.  
OPEN MON THRU SAT FOR LUNCH AND DINNER AND LATE NIGHT SNACKS

**PEKING**  
CHINESE RESTAURANT  
New Management • New Menu • New Atmosphere  
We Will Prepare Your Food As Spicy Or As Mild As You Wish  
591 Bloomfield Ave. Bloomfield, N.J. Open 7 Days 429-0124

**PROUD MARY'S**  
Restaurant - Lounge  
**PROUD MARY'S**  
409 Franklin St. Bloomfield 429-9246

**Karpen's** Deli Restaurant  
473-6408  
Breakfast • Lunch • Dinner  
Mon.-Fri. 9-8 Sat. & Sun. 8-8  
1115 Bloomfield Ave. Clifton  
Northern N.J.'s Finest Sandwich Shop

**WILLIE'S**  
Diner - Restaurant  
9 State St., Bloomfield 748-7414  
Open 7 Days 24 Hours  
Italian Specialties!  
Steaks & Chops  
Delicious Salad Bar - Homemade Pastries





## HELP WANTED

CAFETERIA  
HELPER  
6:30AM-3PM

Permanent position. General helper for industrial cafeteria. Clean floors, wash dishes & related duties. 11 paid holidays. Excellent benefits.

Call W.W. Reinhold  
Wallace & Therman Div.  
PENNSYLVANIA  
CORPORATION  
25 Main St. Belleville  
Phone: 759-8000

An equal opportunity  
employer

DENTAL ASSISTANT  
MUST HAVE EX-  
PERIENCE. PLEASE  
CALL

465-1272

CLERK TYPIST  
PROVIDENT SAVINGS  
BANK  
BLOOMFIELD CENTER  
Full time position. Plus  
office exp. req. Gd. typ-  
ing skills. Gd. com-  
munications ability. Exc.  
salary & benefits package.  
Call Personnel Dept.  
759-5780

Equal Opportunity Employer M/F/H/V  
member F.D.I.C.

ENGINEERING  
R & D PHARM  
PH.D. in Analytical  
Chemistry with 1-10  
years experience. HPLC,  
GC, IR, UV, NMR, etc.  
layer TLC. A/C. Send  
resume to TSI-Suite 101  
Ten Thousand W. 75th St.  
S.M., Kansas 66204

RESTAURANT WORK  
We are seeking en-  
thusiastic, industrial people  
who enjoy working with  
the public, wait on  
customers, prepare  
quality products plus per-  
form other general  
restaurant duties in clean, modern sur-  
roundings. Mail day  
available to work days  
and or nights. For inter-  
view appointment call  
manager between 3-  
8PM. Monday April 15  
338-8900. 100 M.F.

FRIENDLY  
Restaurants

REAL ESTATE  
SALESPERSONS  
AND BROKERS  
Licensees now being  
GARDEN STATE  
SCHOOL OF  
REAL ESTATE  
371 Brighton Ave.  
Verona  
For information call  
239-1216 or 371-8867

13

WEAVER KNITTER  
SIZES GOOD. KNT-  
TER FOR 3 GAUGE  
KNITTING BULKY  
MACHINE. CALL DAY  
OR EVENING 683-1878

411

CLERK TYPIST-  
Accounts  
Receivable  
(TEMPORARY)

Temporary position for  
individual with 50-60 typ-  
ing skills for  
statistical typing. Must  
have aptitude for figures  
and willing to do other  
clerical duties including  
filing.

We offer excellent  
salaries and ce paid  
benefits including tuition  
aid.

Call W.W. Reinhold  
Personnel Dept.  
(201) 759-8000  
Wallace & Therman Div.  
PENNSYLVANIA  
CORPORATION  
25 Main St. Belleville  
An Equal  
Opportunity Employer

RETAIL  
SPRINGTIME  
COLOR IT  
\$GREEN\$S  
WITH A  
FULL TIME OR  
PART TIME JOB  
+ IMMEDIATE  
DISCOUNT!

SEASONAL OPENINGS for  
CASHIERS  
SALESPERSONS  
STOCK  
FULL & PART TIME  
Experience preferred. All  
schedules included. Open  
evening and weekend  
hours.

APPLICATIONS  
ACCEPTED  
MON-FRI 10AM-6PM  
& TUE & THU  
EVEN. 5-7PM  
PERSONNEL  
DEPT. 'B'

FORTUNOFF  
AT WAYNE  
25 West Belt Mall  
25 West Belt Mall  
Rt. 25 Wayne  
Equal Opportunity Employer M/F

WANTED? Workmen to  
earn \$100+ weekly, to be  
trained in skin care &  
color consultants. No  
experience necessary.  
Part time/full time. Call  
for interview.

284-0652 411

## HELP WANTED

## CLERKS

General clerical in busy  
data processing environ-  
ment. Light typing or  
CRT knowledge helpful  
but not essential. At-  
tention to details and good  
with figures. Will train  
qualified candidates.  
Salary plus benefits and  
growth potential. Ap-  
plications accepted 10AM-12Noon or 2PM-4PM.

Call W.W. Reinhold  
Wallace & Therman Div.  
PENNSYLVANIA  
CORPORATION  
25 Main St. Belleville  
Phone: 759-8000

LCS INDUSTRIES  
120 Brighton Road  
Clifton, NJ 07012  
Equal Opportunity  
Employer M/F

Bookkeeper for  
Chiropractic office. Full  
or Part time avail. Must  
be responsible & person-  
able. Call 778-7766.

BLDG  
SUPERINTENDENT  
Comp needed for gen-  
man. Apt. uti. &  
phone. Avail. Sal &  
bnfts. Please call immed.  
661-W-O-R-K  
Fee paid.

72 DODGE VAN, GOOD  
COND. FOR APPROPRI-  
ATE. PART TIME EVEN-  
INGS AFTER 5PM 751-  
8324

MAIDS/PORTER  
FULL & PART TIME  
Excellent company  
benefits which include  
Blue Cross, Blue Shield,  
dental, optical, prescrip-  
tion plan, paid holidays,  
etc. Apply in person only  
to: JAN SWANDER  
RAMADAN  
Rt. 3 East Clifton, NJ  
bet 9 am - 2 pm 3-28

DRIVER/Warehouse-  
man. Person needed to  
drive, warehouse work  
do some warehouse  
work. Must have clear  
driving record. Full  
company paid bnfts. Im-  
med. opening. Call  
751-5945 ask for  
Jasper.

CLERICAL  
338-8900. 100 M.F.

FRIENDLY  
Restaurants

REAL ESTATE  
SALESPERSONS  
AND BROKERS  
Licensees now being  
GARDEN STATE  
SCHOOL OF  
REAL ESTATE  
371 Brighton Ave.  
Verona  
For information call  
239-1216 or 371-8867

13

WEAVER KNITTER  
SIZES GOOD. KNT-  
TER FOR 3 GAUGE  
KNITTING BULKY  
MACHINE. CALL DAY  
OR EVENING 683-1878

411

CLERK TYPIST-  
Accounts  
Receivable  
(TEMPORARY)

Temporary position for  
individual with 50-60 typ-  
ing skills for  
statistical typing. Must  
have aptitude for figures  
and willing to do other  
clerical duties including  
filing.

We offer excellent  
salaries and ce paid  
benefits including tuition  
aid.

Call W.W. Reinhold  
Personnel Dept.  
(201) 759-8000  
Wallace & Therman Div.  
PENNSYLVANIA  
CORPORATION  
25 Main St. Belleville  
An Equal  
Opportunity Employer

RETAIL  
SPRINGTIME  
COLOR IT  
\$GREEN\$S  
WITH A  
FULL TIME OR  
PART TIME JOB  
+ IMMEDIATE  
DISCOUNT!

SEASONAL OPENINGS for  
CASHIERS  
SALESPERSONS  
STOCK  
FULL & PART TIME  
Experience preferred. All  
schedules included. Open  
evening and weekend  
hours.

APPLICATIONS  
ACCEPTED  
MON-FRI 10AM-6PM  
& TUE & THU  
EVEN. 5-7PM  
PERSONNEL  
DEPT. 'B'

FORTUNOFF  
AT WAYNE  
25 West Belt Mall  
25 West Belt Mall  
Rt. 25 Wayne  
Equal Opportunity Employer M/F

WANTED? Workmen to  
earn \$100+ weekly, to be  
trained in skin care &  
color consultants. No  
experience necessary.  
Part time/full time. Call  
for interview.

284-0652 411

## HELP WANTED

## TYPESETTER

EXPERIENCE HELPFUL.  
NUTLEY AREA. FLEXIBLE  
HOURS. DAYS/EVENINGS. WILL  
TRAIN GOOD TYPIST.

CALL 667-2100  
CAROL

RESTAURANT  
COOKS/PRODUCTION  
WAITERS/WAITRESSES

Immediate openings now available full time,  
part time, days and evenings. Experience preferred, but  
not necessary. Uniforms provided. Food discount.  
Call between 2-5PM for interview. Ask for Steve  
McCrosbie, Manager.

156 Main Ave. Passaic, NJ  
778-2553

13

WEAVER KNITTER  
SIZES GOOD. KNT-  
TER FOR 3 GAUGE  
KNITTING BULKY  
MACHINE. CALL DAY  
OR EVENING 683-1878

411

CLERK TYPIST-  
Accounts  
Receivable  
(TEMPORARY)

Temporary position for  
individual with 50-60 typ-  
ing skills for  
statistical typing. Must  
have aptitude for figures  
and willing to do other  
clerical duties including  
filing.

We offer excellent  
salaries and ce paid  
benefits including tuition  
aid.

Call W.W. Reinhold  
Personnel Dept.  
(201) 759-8000  
Wallace & Therman Div.  
PENNSYLVANIA  
CORPORATION  
25 Main St. Belleville  
An Equal  
Opportunity Employer

RETAIL  
SPRINGTIME  
COLOR IT  
\$GREEN\$S  
WITH A  
FULL TIME OR  
PART TIME JOB  
+ IMMEDIATE  
DISCOUNT!

SEASONAL OPENINGS for  
CASHIERS  
SALESPERSONS  
STOCK  
FULL & PART TIME  
Experience preferred. All  
schedules included. Open  
evening and weekend  
hours.

APPLICATIONS  
ACCEPTED  
MON-FRI 10AM-6PM  
& TUE & THU  
EVEN. 5-7PM  
PERSONNEL  
DEPT. 'B'

FORTUNOFF  
AT WAYNE  
25 West Belt Mall  
25 West Belt Mall  
Rt. 25 Wayne  
Equal Opportunity Employer M/F

WANTED? Workmen to  
earn \$100+ weekly, to be  
trained in skin care &  
color consultants. No  
experience necessary.  
Part time/full time. Call  
for interview.

284-0652 411

## HELP WANTED

OUTSIDE CLASSIFIED  
SALES REPRESENTATIVE

Lucrative full time position. Must be sales  
minded. Advertising background preferred  
but not required.

Call 667-3000  
Ask for Sal

PART TIME TELEPHONE SALES

Sell your #1 local newspaper.  
Part-time evenings and Saturday morn-  
ings. Guaranteed salary plus bonus.

Call 667-2100

13

WEAVER KNITTER  
SIZES GOOD. KNT-  
TER FOR 3 GAUGE  
KNITTING BULKY  
MACHINE. CALL DAY  
OR EVENING 683-1878

411

CLERK TYPIST-  
Accounts  
Receivable  
(TEMPORARY)

Temporary position for  
individual with 50-60 typ-  
ing skills for  
statistical typing. Must  
have aptitude for figures  
and willing to do other  
clerical duties including  
filing.

We offer excellent  
salaries and ce paid  
benefits including tuition  
aid.

Call W.W. Reinhold  
Personnel Dept.  
(201) 759-8000  
Wallace & Therman Div.  
PENNSYLVANIA  
CORPORATION  
25 Main St. Belleville  
An Equal  
Opportunity Employer

RETAIL  
SPRINGTIME  
COLOR IT  
\$GREEN\$S  
WITH A  
FULL TIME OR  
PART TIME JOB  
+ IMMEDIATE  
DISCOUNT!

SEASONAL OPENINGS for  
CASHIERS  
SALESPERSONS  
STOCK  
FULL & PART TIME  
Experience preferred. All  
schedules included. Open  
evening and weekend  
hours.

APPLICATIONS  
ACCEPTED  
MON-FRI 10AM-6PM  
& TUE & THU  
EVEN. 5-7PM  
PERSONNEL  
DEPT. 'B'

FORTUNOFF  
AT WAYNE  
25 West Belt Mall  
25 West Belt Mall  
Rt. 25 Wayne  
Equal Opportunity Employer M/F

WANTED? Workmen to  
earn \$100+ weekly, to be  
trained in skin care &  
color consultants. No  
experience necessary.  
Part time/full time. Call  
for interview.

284-0652 411

## HELP WANTED

## TYPIST

Can you type 40 wpm?  
Learn a new skill or  
add key "Data Entry"  
in today's paper.

## ADP

The Computing Company

Local Mfg. Co. seeking  
F/T typist w/entry level  
S/R position w/growth  
opp. 86-hr. starting  
sal. w/good bnfts.  
Please call immed.  
All Phase Employment  
661-W-O-R-K

RECP. \$235  
I seek exp. typist for 2  
client cos. Typ. pleasant  
voice, front desk pos.  
Promotion opp. F/pd  
Call Kathy Phillips at  
743-1614

NATIONAL  
PERSONNEL  
547 Bloomfield Ave.  
Bloomfield

SECY \$17K  
NO STENO  
Lg. mfg. co. has opening  
for indy. w/exp. in admin  
skills. Word proc.  
process, reports. F/pd  
Call Kathy Phillips at  
743-1614

NATIONAL  
PERSONNEL  
547 Bloomfield Ave.  
Bloomfield

TELLER \$200  
Mfg. bank has 3 openings  
for indy. w/exp. exp.  
Pos. offers advance. Exc.  
bnfts. Lovely locs.  
F/pd. Call Kathy Phillips  
at 743-1614

NATIONAL  
PERSONNEL  
547 Bloomfield Ave.  
Bloomfield

LABORERS FOR SERVICE  
CONTRACTOR TO  
TRAIN & DEVELOP  
1270 WORKING  
FOREMAN MUST HAVE  
LTD. ABILITY TO  
DRIVE STANDARD  
TRANS. LIBERAL  
BENEFITS. APPLY AT  
875 N. SUMMER AVE.  
NEWARK, N.J. (BEL-  
LEVILLE) 338-1865  
(Mary Ellen 483-3200)

CARPENTERS  
Steady local Working 5  
6 days a week. Hourly  
wages, hospitalization  
available. Call Michael  
Bosch 338-1865 & 5 at  
Construction Co. 748-8000

RECEPTIONIST  
PART TIME EVENINGS/  
WEEK-ENDS  
Larg. retail store. State  
Management firm is seek-  
ing individual with  
strong aptitude to  
meet & greet their clients.  
Applicant should have  
good typing/punching  
skills. Pleasant, business  
manner, willingness to accept  
many diversified  
duties. Previous receptionist  
experience a must. Even-  
ings 5-8P.M., week-ends  
9AM-5PM. For inter-  
view call Lynne Toman,  
751-7500

govel realtors  
737 Joralemon St.  
Belleville

K.MART  
Accepting applications  
for full & part time em-  
ployment. Mornings,  
afternoons, evenings.  
Outside maintenance,  
check outs, auto &  
sporting goods.

ALL-PHASE  
EMPLOYMENT  
SERVICE  
362 Franklin Ave.  
Belleville, N.J.  
661-W-O-R-K

Permanent, Temporary  
F/T and P/T positions.  
Vacation Plan, Bonus  
Plans.  
Register Immediately

HELP WANTED  
The Eastman Chemical  
division of Eastman  
Kodak Co. a major  
manufacturer of  
chemicals, plastics &  
fibers, has a challenging  
opportunity for an in-  
dustrial pharmacist. In-  
dividual must have a  
P.H.D. in pharmaceutical  
sciences w/exp. in for-  
mulation research on  
pharmaceutical products  
and nutrition and for  
controlled drug systems  
or related fields. The  
Eastman Chemical divi-  
sion is headquartered in  
North East Tennessee, a  
progressive Tri-Cities  
area of North East Ten-  
nessee. Individual will  
receive a salary com-  
mensurate w/exp. &  
qualifications and an out-  
standing employee benefit  
program.  
Interested candidates  
should send resume to:  
Cheryl Harvey  
Personnel Dept.  
Eastman Chemical Co.  
PO Box 175  
Kingsport, Tennessee  
37662  
E.O.E. 411

Wanted trainee. Need  
energetic individual to  
train all phases of an  
Industrial Supply opera-  
tions. Excellent starting  
salary. Realistic com-  
pensation. Monday to Fri-  
day work week. 8AM to  
4:30PM. For interview  
please call 759-3114 Mr. Rich.

HEALTH WEALTH  
New health nutritional  
company grossed \$80  
million month of Dec.  
seen on TV. Full or  
part time. Supervisory  
position avail. Call John  
Weber 748-5084

FURNITURE MOVERS  
Full & part time.  
Call  
731-4133

997-8086  
\$4.00 per hour  
plus comm.  
\$15.00 per hr. potential.  
Morning & Evening shift.  
Telephone Sales. E.W.

COMPUTER  
TYPIST/TELETYPE  
High school graduates in-  
teresting in pursuing a  
rewarding career in  
business. Must have good  
typing skills, computer  
knowledge not necessary  
but helpful. Will train.  
Good benefits.  
Call for app.  
678-2000  
Mon thru Fri.

Excellent income for  
part time home assembly  
work. For info. call 312-  
741-8400, ext. 837.

SECRETARIAL  
NO STENO  
\$220.00 per wk.  
Good phone & typing  
skills, diversity, enter-  
prise. Bright beginner or  
experienced returnee. Get  
good start.  
Call Gerolga at 728-1300

Computer Operators,  
telephone answering ser-  
vice, no experience, will  
train. Day, eve, midnight  
shifts.  
Call 731-6500

AUTO PARTS  
COUNTER STOCK  
PERSON. FULL TIME.  
Call 991-0710

Care for child in house.  
Must be intelligent &  
personable. Refs & own  
car. 746-7953

TELLER  
NEWARK AREA  
MAY 1ST 7:15  
Eve hrs. req. Also Sat.  
days. Exp. pref. but will  
train. good salary  
Call 485-4020  
E.O.E.

## HELP WANTED

Secretary. F/T.  
Maplewood area. Good  
typing & sten skills req.  
Good salary, excellent  
bnfts. Call 762-2302 Ext.  
18.

E/O/E  
Yorkwood Savings &  
Loan Assoc.

Please add 4 yr. old  
African. Loveable.  
Pedigree. Moving. Can't  
keep.

Call 667-7117  
or 483-2959

Business Opportunities

EXCITING NEW HIGH  
INCOME business oppor-  
tunity. Be your own boss,  
set your own hours. No  
investment. Call 759-1885.

SITUATIONS WANTED

MATURE, ACTIVE, in-  
telligent experience  
vetern's widow seeking  
position as caretaker for  
home or small apartment  
building. Belleville-  
LeNuilly area near the  
Essex County Geriatrics  
Center in exchange for  
lodgings, utilities. Call  
telephone no salary ex-  
pected. Will keep  
property in order, protect  
premises, keep grounds,  
etc. Possess a valid, no  
blemishes N.J. driver's  
license. If interested please  
call 312-824-1560, Ask  
for Mrs. S.

LOST & FOUND

LOST CAT: Female  
Gray & black tiger stripe  
with white chest & paws.  
Blue collar with Texas  
tags. Vicinity of P. Pas-  
saic Ave., Nutley.  
REWARD Call 667-6665

INSTRUCTIONS

NEED A  
MATH TUTOR?

Call  
751-5150  
ANYTIME 98

CAKE DECORATING  
Classes made to order.  
Master Cake Decorator  
using the Wilton method.  
Michael the Master  
Cake Magician  
School of Cake  
362 Franklin Ave. 312-824-1560  
667-2788 or 667-6341

MUSIC TEACHER (no  
professional music copy-  
ist) now accepting new  
students for Flute, Clarinet,  
phone, Clarinet, Guitar,  
Bass Guitar, in their own  
home. Please call  
338-1865 74

Professional KARATE in-  
struction: Class or private  
lessons, beginners through  
advanced. 5th dan. Contact  
Mike Pollard 338-3172

FOR RENT

APARTMENTS WANTED  
ATTENTION LANDLORDS!

We have many qualified tenants that are screened  
& waiting for apartments or homes. You can  
choose that special tenant at no cost to you. For  
information call Tony Grande  
MARZULLI REALTORS  
264 Belleville Ave., Bloomfield, N.J.  
743-2306 88

BLOOMFIELD  
3 1/2 rm luxury garden.  
Vacant. \$800 per mo incl  
heat, hot water, car-  
peting, appliances.

1 bdrm garden apt. Avail  
6-1-85 incl heat, hot  
water, carpeting & gar-  
age.

4 lg rms-parquet floors,  
mod. 4475 + util. Avail 5-1

BELLEVILLE: 5 1/2 rms,  
h/w use of attc. \$650,  
h/w incl. MONT-  
AGENCY, 759-8900.

TO INSPECT CALL  
Arthur L. Grutt, Realtor  
GLENWOOD  
Real Estate Agency  
429-7380  
905 BROAD ST., BLOOMFIELD

ATTENTION  
LANDLORDS!  
APARTMENTS WANTED  
WE SCREEN ALL PROSPECTIVE  
TENANTS, NO FEE TO  
LANDLORD.

COSTANTINE REALTY  
264 Belleville Ave.,  
Nutley, N.J.  
Realtor 667-7070 928

ESSEX COUNTY  
APTS AVAILABLE  
ALL TYPES  
& SIZES  
CALL 439-0864  
BELLVILLE REALTORS  
UNLIMITED

Bloomfield 3 1/2 large  
rooms, 3rd fl. The  
bright cheerful,  
newly rehab including \$480.  
Near N.Y. bus line  
3 rms. 4485.00 Avail.  
8-1-85. Call Susan 429-  
8444.

ALL LANDLORDS  
We want your apartments.  
None too small or too large.  
We send out prospective  
tenants to you by appointment  
only. Absolutely no fee in-  
volved. Our service to you  
completes your service here.

429-9284  
RENTALS UNLIMITED 74



BANKING

PART TIME CLERK

First Fidelity Bank is currently looking for  
a part time clerk for its Kingsland St. of-  
fice.

6 months general clerical experience, and a  
Customer Service background is required.  
Typing must be 45wpm.

Hours for the position are Monday thru Fri-  
day, 9AM-1PM, or Monday, Thursday, &  
8:30AM to release.

We offer a salary commensurate with ex-  
perience. If you have the qualifications we  
are seeking and you want a more promising  
future, then please apply in person at our  
Human Resource Dept., between 9AM-  
12Noon, Monday-Friday, or call: 565-3355.

FIRST FIDELITY BANK  
N.A. NEW JERSEY  
"Putting You First Keeps Us First"  
500 Broad Street, Newark, NJ 07102

FIRST FIDELITY BANK

FIRST FIDELITY BANK N.A. New Jersey  
Equal Opportunity Employer M/F/H/V

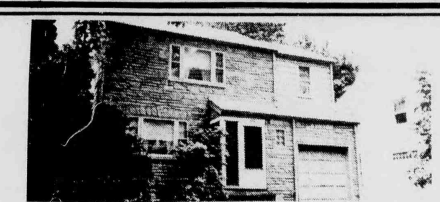
REAL ESTATE REAL ESTATE REAL ESTATE REAL ESTATE REAL ESTATE REAL ESTATE REAL ESTATE REAL ESTATE REAL ESTATE

180 Centre St.  
Nutley, N.J. 07110  
667-3440

# G EORGE E. M AC M UNN C O.

REALTORS

100 Woodport Road  
Sparta, N.J. 07871  
729-8727



**SPRING GARDEN - NUTLEY** - DON'T MISS THIS spotless home on beautiful tree lined Street, 3 big bedrooms, family room & encl. porch on 1st floor; 1 1/2 baths. ASKING \$119,900.



**JUST LISTED - NUTLEY** - CUSTOM BUILT extra large cape with formal din. rm., frpl in Liv. Rm., huge mod kit, 1 1/2 baths, 3 big bedrooms + beautiful REDWOOD Family Room. CALL FOR DETAILS!!!

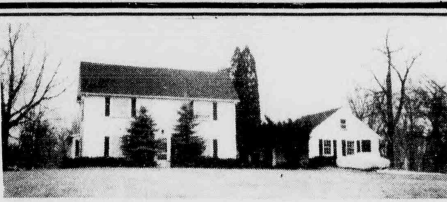
**DO YOU KNOW  
WHAT YOUR  
HOUSE IS  
WORTH  
TODAY?**

We offer a current market  
Value analysis ...  
Just pick up the phone & call

Look for this Emblem



REALTOR

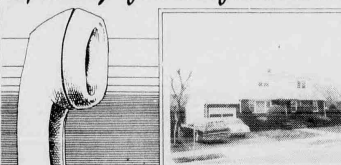


**LIKE PRIVACY? THIS IS IT!!!** 4 bedrooms, 2 1/2 baths in convenient area of SPARTA on 10 plus acres. Family rm. on 1st & screened porch off din. rm. & 2 car garage. If you want a horse or two this is perfect. ASKING \$149,900.



**LAKE MOHAWK - WEST SHORE** on 82x238 landscaped lot, Liv. Rm. w/frpl, 1 1/2x14 Din. R., Mod Kit & bath, fam. Rm. w/sliders to patio. JUST LISTED AT \$102,900.

Speaking of wonderful homes...



Immaculate! Is the only way to describe this aluminum and brick 2 family cape in Belleville. Large living room, dining room, large modern kitchen, 3 bedrooms, and 1 1/2 baths. 2nd floor features large kitchen, living room, 2 bedrooms and bath. Finished basement with powder room. Garage. Call for details.

Deal us.

**Century 21**  
**WAYNE K. THOMAS**  
**REALTORS**

277 Broad Street Bloomfield, New Jersey  
(201) 429-7400

"Each office independently owned and operated"  
MEMBER OF BLOOMFIELD GLEN RIDGE,  
NUTLEY, BELLEVILLE BOARD OF REALTORS

REAL ESTATE FOR RENT

**NUTLEY**  
4 rms. \$575 heat incl.  
**BELLEVILLE**  
Whole house, \$900 + util.  
**BLOOMFIELD**  
Bent studio, \$520 all util. incl.  
4 rms. \$475 + util.  
Whole house, \$1100 + util.  
**CLIFTON**  
5 rms. \$550 + util.  
**PASSAIC PARK**  
6 rms. \$600 + util.  
**COSTANTINE**  
REALTY  
Realtor 667-7070

**PRIVATE**  
OFFICE AVAIL.  
WITHIN INSURANCE  
AGENCY \$215 per mo.  
includes air condition &  
other util.  
Call 667-4013

**NUTLEY** - Luxury 1 & 2  
bdm. grds. HDHW. N.Y.  
trans. Starting at \$650.  
**GENERATION IV**  
288-6663 4.25

REAL ESTATE

FOR SALE

**GOVERNMENT HOMES**  
from \$1 (U repair). Also  
delinquent tax property.  
Call 1-800-687-6000.  
GH-7100 for information.  
5.36

**NUTLEY**  
MOTHER DAUGHTER  
JUST BEING BUILT - lg.  
beautiful 1 family  
Colonial on oversized lot  
in quiet secluded  
neighborhood. Perfect  
for housing room. Too  
many extras to list. List  
price \$183,000. Call  
Realtor.

Since 1917  
**EUGENE J.**  
**Reilly's**  
Real Estate Insurance  
759-1682

REAL ESTATE FOR SALE

**BLOOMFIELD**  
**TUDOR**  
Brookdale. New listing.  
Liv. rm, din. rm, kit with  
breakfast nook, 2 bdms,  
sunporch + 3 bdms, tile  
bath. Fin rec rm. Near  
new road. No storms.  
N.Y. Bus. Offered at  
package \$100,000.  
\$185,000.

**BELLEVILLE**  
2 FAM WITH EXTRA LOT  
#4 BELMONT AVE  
1st fl. Liv. rm, kit, 2  
bdms, tile bath. 2nd fl.  
Liv. rm, kit, 2 bdms, full  
bath. Extra lot. \$201,000  
incl. in price. Asking for  
package \$100,000.

**TO INSPECT CALL**  
**Arthur L. Grutt, Realtor**  
**GLENWOOD**  
Real Estate Agency  
429-7380  
905 BROAD ST., BLOOMFIELD

**WHAT IS YOUR OFFER?**  
**OWNER WILL LISTEN**  
1/2 BRICK COLONIAL MUST BE SOLD  
3 large bedrooms & bath on 2nd floor. Full  
bath on 1st. Modern kitchen, spacious living  
room. Many extra features. One block to  
New York bus, shopping & grade school.

**DO YOU KNOW THE MARKET VALUE  
OF YOUR HOME?**  
CALL US FOR OUR OPINION WITHOUT  
COST OR OBLIGATION TO LIST OR SELL

EVERYONE KNOWS

**GEORGE T. BOWES**  
YOUR NUTLEY REALTOR SINCE 1933  
581 FRANKLIN AVE., NUTLEY 667-3376

**BLOOMFIELD**  
2 FAMILY  
This main floor home set  
on lg lot. Taxes only  
\$1900. Price \$120's.  
Call Realtor  
\*MADZULLI\*  
264 Belleville Ave.  
Bloomfield, N.J.  
Realtors 745-2390

**NUTLEY**  
JUST REDUCED  
4 bdrm Colonial. 1 1/2  
baths, mod kit, den-3 car  
garage with storage, on deep  
lot. Move-in cond. Near  
trans. stores & school.  
REALTOR  
RECORD REALTY, INC.  
3 High St. Nutley  
667-5500

## GOLD MARKET ANALYSIS CERTIFICATE

Bearer is entitled to a Market Analysis of  
his/her residential property by a Century 21  
agent. Return this Certificate or call for an ap-  
pointment.

**Century 21**

**HOMES R US**  
544 Washington Ave.  
Belleville, N.J.  
751-8800

**Put Number 1  
to work for you.**

REAL ESTATE REAL ESTATE REAL ESTATE

WANTED TO RENT

MINISTER & FAMILY ARE LOOKING FOR 3 BEDROOM APT IN W HUDSON AREA BY JUNE 1483-0055

Recently retired couple needs 4 or 5 room apt. No pets. Bloomfield area. 743-5044 4.18

Working single student looking to rent one room in family house. Excellent references. Nutley area. Call 667-8884 9AM to 4PM

FURNISHED ROOMS

BELLEVILLE FURNISHED ROOM \$65 WKLY. SOME PRIVILEGES A/C YOUNG BUSINESS MAN PREFERRED. CALL 759-7949

Furn. Rm. for rent. House priv. \$95.00 per week. In Mystic Island, NJ. Retired woman pref. to share with same. Call (609) 296-5985

SHERIFF'S SALE SUPERIOR COURT OF NEW JERSEY, CHANCERY DIVISION, ESSEX COUNTY, DOCKET NO. F-6150-83 NEW JERSEY MORTGAGE FINANCE AGENCY, PLAINTIFF vs. WILLIAM J. STEWARD, SINGLE MANS FURNITURE CO., DEFENDANTS. Execution for Sale of Mortgaged Premises.

By virtue of the above stated writ of Execution, to be directed, I shall expose for sale by Public Auction, in SHERIFF'S OFFICE, Essex County Courts Building in Newark, on Tuesday, the 23rd day of April next, at one-thirty P.M., (Preceding Time) Street & Street No. 727 Telford Street, East Orange, New Jersey. Tax Lot & Block No. 10, 7A, Block 741 on the Tax Map of East Orange. Property Dimensions: Approximately 37.50 x 100. Located approximately 325 feet from the nearest intersecting street, Elmwood Avenue. A complete description can be found in the Essex County Register's Office. The approximate amount of the Judgment to be satisfied by said sale is the sum of FORTY THOUSAND TWO HUNDRED SIXTY FIVE DOLLARS AND FIFTY TWO CENTS (\$40,265.22), together with the costs of this sale.

The Sheriff reserves the right to adjourn the sale from time to time as provided by Law. Newark, N.J., March 18, 1985. THOMAS J. D'ALESSIO, Sheriff. Penner, McGovern & Vargo, Attorneys. The Bloomfield Life Mar. 28. Fee: \$73.32 Apr. 4, 11, 18, 1985 No. B085-13

SHERIFF'S SALE SUPERIOR COURT OF NEW JERSEY, CHANCERY DIVISION, ESSEX COUNTY, DOCKET NO. F-6150-83 NEW JERSEY MORTGAGE FINANCE AGENCY, PLAINTIFF vs. ARTHUR WEST, JR., et ux, et al. DEFENDANTS. Execution for Sale of Mortgaged Premises.

By virtue of the above stated writ of Execution, to be directed, I shall expose for sale by Public Auction, in SHERIFF'S OFFICE, Essex County Courts Building in Newark, on Tuesday, the 23rd day of April next, at one-thirty P.M., (Preceding Time) Property to be sold is located in the City of East Orange, County of Essex and State of New Jersey. The approximate amount of the Judgment to be satisfied by said sale is the sum of FORTY FIVE THOUSAND THREE HUNDRED SIXTY SEVEN DOLLARS AND ONE CENT (\$45,367.01), together with the costs of this sale.

The Sheriff reserves the right to adjourn the sale from time to time as provided by Law. Newark, N.J., March 18, 1985. THOMAS J. D'ALESSIO, Sheriff. Penner, McGovern & Vargo, Attorneys. The Bloomfield Life Mar. 28. Fee: \$71.44 No. B085-12

SHERIFF'S SALE SUPERIOR COURT OF NEW JERSEY, CHANCERY DIVISION, ESSEX COUNTY, DOCKET NO. F-6150-83 NEW JERSEY MORTGAGE FINANCE AGENCY, PLAINTIFF vs. ARTHUR WEST, JR., et ux, et al. DEFENDANTS. Execution for Sale of Mortgaged Premises.

By virtue of the above stated writ of Execution, to be directed, I shall expose for sale by Public Auction, in SHERIFF'S OFFICE, Essex County Courts Building in Newark, on Tuesday, the 23rd day of April next, at one-thirty P.M., (Preceding Time) Property to be sold is located in the City of East Orange, County of Essex and State of New Jersey. The approximate amount of the Judgment to be satisfied by said sale is the sum of FORTY FIVE THOUSAND THREE HUNDRED SIXTY SEVEN DOLLARS AND ONE CENT (\$45,367.01), together with the costs of this sale.

The Sheriff reserves the right to adjourn the sale from time to time as provided by Law. Newark, N.J., March 18, 1985. THOMAS J. D'ALESSIO, Sheriff. Penner, McGovern & Vargo, Attorneys. The Bloomfield Life Mar. 28. Fee: \$71.44 No. B085-12

SHERIFF'S SALE SUPERIOR COURT OF NEW JERSEY, CHANCERY DIVISION, ESSEX COUNTY, DOCKET NO. F-6150-83 NEW JERSEY MORTGAGE FINANCE AGENCY, PLAINTIFF vs. ARTHUR WEST, JR., et ux, et al. DEFENDANTS. Execution for Sale of Mortgaged Premises.

By virtue of the above stated writ of Execution, to be directed, I shall expose for sale by Public Auction, in SHERIFF'S OFFICE, Essex County Courts Building in Newark, on Tuesday, the 23rd day of April next, at one-thirty P.M., (Preceding Time) Property to be sold is located in the City of East Orange, County of Essex and State of New Jersey. The approximate amount of the Judgment to be satisfied by said sale is the sum of FORTY FIVE THOUSAND THREE HUNDRED SIXTY SEVEN DOLLARS AND ONE CENT (\$45,367.01), together with the costs of this sale.

The Sheriff reserves the right to adjourn the sale from time to time as provided by Law. Newark, N.J., March 18, 1985. THOMAS J. D'ALESSIO, Sheriff. Penner, McGovern & Vargo, Attorneys. The Bloomfield Life Mar. 28. Fee: \$71.44 No. B085-12

SHERIFF'S SALE SUPERIOR COURT OF NEW JERSEY, CHANCERY DIVISION, ESSEX COUNTY, DOCKET NO. F-6150-83 NEW JERSEY MORTGAGE FINANCE AGENCY, PLAINTIFF vs. ARTHUR WEST, JR., et ux, et al. DEFENDANTS. Execution for Sale of Mortgaged Premises.

By virtue of the above stated writ of Execution, to be directed, I shall expose for sale by Public Auction, in SHERIFF'S OFFICE, Essex County Courts Building in Newark, on Tuesday, the 23rd day of April next, at one-thirty P.M., (Preceding Time) Property to be sold is located in the City of East Orange, County of Essex and State of New Jersey. The approximate amount of the Judgment to be satisfied by said sale is the sum of FORTY FIVE THOUSAND THREE HUNDRED SIXTY SEVEN DOLLARS AND ONE CENT (\$45,367.01), together with the costs of this sale.

The Sheriff reserves the right to adjourn the sale from time to time as provided by Law. Newark, N.J., March 18, 1985. THOMAS J. D'ALESSIO, Sheriff. Penner, McGovern & Vargo, Attorneys. The Bloomfield Life Mar. 28. Fee: \$71.44 No. B085-12

SHERIFF'S SALE SUPERIOR COURT OF NEW JERSEY, CHANCERY DIVISION, ESSEX COUNTY, DOCKET NO. F-6150-83 NEW JERSEY MORTGAGE FINANCE AGENCY, PLAINTIFF vs. ARTHUR WEST, JR., et ux, et al. DEFENDANTS. Execution for Sale of Mortgaged Premises.

By virtue of the above stated writ of Execution, to be directed, I shall expose for sale by Public Auction, in SHERIFF'S OFFICE, Essex County Courts Building in Newark, on Tuesday, the 23rd day of April next, at one-thirty P.M., (Preceding Time) Property to be sold is located in the City of East Orange, County of Essex and State of New Jersey. The approximate amount of the Judgment to be satisfied by said sale is the sum of FORTY FIVE THOUSAND THREE HUNDRED SIXTY SEVEN DOLLARS AND ONE CENT (\$45,367.01), together with the costs of this sale.

The Sheriff reserves the right to adjourn the sale from time to time as provided by Law. Newark, N.J., March 18, 1985. THOMAS J. D'ALESSIO, Sheriff. Penner, McGovern & Vargo, Attorneys. The Bloomfield Life Mar. 28. Fee: \$71.44 No. B085-12

SHERIFF'S SALE SUPERIOR COURT OF NEW JERSEY, CHANCERY DIVISION, ESSEX COUNTY, DOCKET NO. F-6150-83 NEW JERSEY MORTGAGE FINANCE AGENCY, PLAINTIFF vs. ARTHUR WEST, JR., et ux, et al. DEFENDANTS. Execution for Sale of Mortgaged Premises.

By virtue of the above stated writ of Execution, to be directed, I shall expose for sale by Public Auction, in SHERIFF'S OFFICE, Essex County Courts Building in Newark, on Tuesday, the 23rd day of April next, at one-thirty P.M., (Preceding Time) Property to be sold is located in the City of East Orange, County of Essex and State of New Jersey. The approximate amount of the Judgment to be satisfied by said sale is the sum of FORTY FIVE THOUSAND THREE HUNDRED SIXTY SEVEN DOLLARS AND ONE CENT (\$45,367.01), together with the costs of this sale.

The Sheriff reserves the right to adjourn the sale from time to time as provided by Law. Newark, N.J., March 18, 1985. THOMAS J. D'ALESSIO, Sheriff. Penner, McGovern & Vargo, Attorneys. The Bloomfield Life Mar. 28. Fee: \$71.44 No. B085-12

SHERIFF'S SALE SUPERIOR COURT OF NEW JERSEY, CHANCERY DIVISION, ESSEX COUNTY, DOCKET NO. F-6150-83 NEW JERSEY MORTGAGE FINANCE AGENCY, PLAINTIFF vs. ARTHUR WEST, JR., et ux, et al. DEFENDANTS. Execution for Sale of Mortgaged Premises.

By virtue of the above stated writ of Execution, to be directed, I shall expose for sale by Public Auction, in SHERIFF'S OFFICE, Essex County Courts Building in Newark, on Tuesday, the 23rd day of April next, at one-thirty P.M., (Preceding Time) Property to be sold is located in the City of East Orange, County of Essex and State of New Jersey. The approximate amount of the Judgment to be satisfied by said sale is the sum of FORTY FIVE THOUSAND THREE HUNDRED SIXTY SEVEN DOLLARS AND ONE CENT (\$45,367.01), together with the costs of this sale.

The Sheriff reserves the right to adjourn the sale from time to time as provided by Law. Newark, N.J., March 18, 1985. THOMAS J. D'ALESSIO, Sheriff. Penner, McGovern & Vargo, Attorneys. The Bloomfield Life Mar. 28. Fee: \$71.44 No. B085-12

SHERIFF'S SALE SUPERIOR COURT OF NEW JERSEY, CHANCERY DIVISION, ESSEX COUNTY, DOCKET NO. F-6150-83 NEW JERSEY MORTGAGE FINANCE AGENCY, PLAINTIFF vs. ARTHUR WEST, JR., et ux, et al. DEFENDANTS. Execution for Sale of Mortgaged Premises.

By virtue of the above stated writ of Execution, to be directed, I shall expose for sale by Public Auction, in SHERIFF'S OFFICE, Essex County Courts Building in Newark, on Tuesday, the 23rd day of April next, at one-thirty P.M., (Preceding Time) Property to be sold is located in the City of East Orange, County of Essex and State of New Jersey. The approximate amount of the Judgment to be satisfied by said sale is the sum of FORTY FIVE THOUSAND THREE HUNDRED SIXTY SEVEN DOLLARS AND ONE CENT (\$45,367.01), together with the costs of this sale.

The Sheriff reserves the right to adjourn the sale from time to time as provided by Law. Newark, N.J., March 18, 1985. THOMAS J. D'ALESSIO, Sheriff. Penner, McGovern & Vargo, Attorneys. The Bloomfield Life Mar. 28. Fee: \$71.44 No. B085-12

SHERIFF'S SALE SUPERIOR COURT OF NEW JERSEY, CHANCERY DIVISION, ESSEX COUNTY, DOCKET NO. F-6150-83 NEW JERSEY MORTGAGE FINANCE AGENCY, PLAINTIFF vs. ARTHUR WEST, JR., et ux, et al. DEFENDANTS. Execution for Sale of Mortgaged Premises.

By virtue of the above stated writ of Execution, to be directed, I shall expose for sale by Public Auction, in SHERIFF'S OFFICE, Essex County Courts Building in Newark, on Tuesday, the 23rd day of April next, at one-thirty P.M., (Preceding Time) Property to be sold is located in the City of East Orange, County of Essex and State of New Jersey. The approximate amount of the Judgment to be satisfied by said sale is the sum of FORTY FIVE THOUSAND THREE HUNDRED SIXTY SEVEN DOLLARS AND ONE CENT (\$45,367.01), together with the costs of this sale.

The Sheriff reserves the right to adjourn the sale from time to time as provided by Law. Newark, N.J., March 18, 1985. THOMAS J. D'ALESSIO, Sheriff. Penner, McGovern & Vargo, Attorneys. The Bloomfield Life Mar. 28. Fee: \$71.44 No. B085-12

SHERIFF'S SALE SUPERIOR COURT OF NEW JERSEY, CHANCERY DIVISION, ESSEX COUNTY, DOCKET NO. F-6150-83 NEW JERSEY MORTGAGE FINANCE AGENCY, PLAINTIFF vs. ARTHUR WEST, JR., et ux, et al. DEFENDANTS. Execution for Sale of Mortgaged Premises.

By virtue of the above stated writ of Execution, to be directed, I shall expose for sale by Public Auction, in SHERIFF'S OFFICE, Essex County Courts Building in Newark, on Tuesday, the 23rd day of April next, at one-thirty P.M., (Preceding Time) Property to be sold is located in the City of East Orange, County of Essex and State of New Jersey. The approximate amount of the Judgment to be satisfied by said sale is the sum of FORTY FIVE THOUSAND THREE HUNDRED SIXTY SEVEN DOLLARS AND ONE CENT (\$45,367.01), together with the costs of this sale.

The Sheriff reserves the right to adjourn the sale from time to time as provided by Law. Newark, N.J., March 18, 1985. THOMAS J. D'ALESSIO, Sheriff. Penner, McGovern & Vargo, Attorneys. The Bloomfield Life Mar. 28. Fee: \$71.44 No. B085-12

SHERIFF'S SALE SUPERIOR COURT OF NEW JERSEY, CHANCERY DIVISION, ESSEX COUNTY, DOCKET NO. F-6150-83 NEW JERSEY MORTGAGE FINANCE AGENCY, PLAINTIFF vs. ARTHUR WEST, JR., et ux, et al. DEFENDANTS. Execution for Sale of Mortgaged Premises.

## LIST YOUR HOME WITH US.

We can help you get the most money

**WE GET RESULTS**  
Here's Why:

- 3,000 potential prospects in our file
- Area leader in home sales
- Experienced specialists ready to sell your home
- Free Home Warranty Protection plan
- Relocation service
- Financing to help every qualified buyer
- Member Multiple Listing service

**WANT TO KNOW WHAT YOUR HOME IS WORTH?**

**Call Us Today for a FREE EVALUATION**

**govel REALTORS (201) 751-7500**  
727 Joralemon Street, Belleville, N.J.



BECK, DELIA & ROSENBERG, ATTORNEYS

THE Bloomfield Life Apr. 11, 18, 1985

Fee: \$75.20 May 2, 1985 No. B085-14

SHERIFF'S SALE SUPERIOR COURT OF NEW JERSEY, CHANCERY DIVISION, ESSEX COUNTY, DOCKET NO. F-6150-83 NEW JERSEY MORTGAGE FINANCE AGENCY, PLAINTIFF vs. WILLIAM J. STEWARD, SINGLE MANS FURNITURE CO., DEFENDANTS. Execution for Sale of Mortgaged Premises.

By virtue of the above stated writ of Execution, to be directed, I shall expose for sale by Public Auction, in SHERIFF'S OFFICE, Essex County Courts Building in Newark, on Tuesday, the 23rd day of April next, at one-thirty P.M., (Preceding Time) Street & Street No. 727 Telford Street, East Orange, New Jersey. Tax Lot & Block No. 10, 7A, Block 741 on the Tax Map of East Orange. Property Dimensions: Approximately 37.50 x 100. Located approximately 325 feet from the nearest intersecting street, Elmwood Avenue. A complete description can be found in the Essex County Register's Office. The approximate amount of the Judgment to be satisfied by said sale is the sum of FORTY THOUSAND TWO HUNDRED SIXTY FIVE DOLLARS AND FIFTY TWO CENTS (\$40,265.22), together with the costs of this sale.

The Sheriff reserves the right to adjourn the sale from time to time as provided by Law. Newark, N.J., March 18, 1985. THOMAS J. D'ALESSIO, Sheriff. Penner, McGovern & Vargo, Attorneys. The Bloomfield Life Mar. 28. Fee: \$73.32 Apr. 4, 11, 18, 1985 No. B085-13

SHERIFF'S SALE SUPERIOR COURT OF NEW JERSEY, CHANCERY DIVISION, ESSEX COUNTY, DOCKET NO. F-6150-83 NEW JERSEY MORTGAGE FINANCE AGENCY, PLAINTIFF vs. ARTHUR WEST, JR., et ux, et al. DEFENDANTS. Execution for Sale of Mortgaged Premises.

By virtue of the above stated writ of Execution, to be directed, I shall expose for sale by Public Auction, in SHERIFF'S OFFICE, Essex County Courts Building in Newark, on Tuesday, the 23rd day of April next, at one-thirty P.M., (Preceding Time) Property to be sold is located in the City of East Orange, County of Essex and State of New Jersey. The approximate amount of the Judgment to be satisfied by said sale is the sum of FORTY FIVE THOUSAND THREE HUNDRED SIXTY SEVEN DOLLARS AND ONE CENT (\$45,367.01), together with the costs of this sale.

The Sheriff reserves the right to adjourn the sale from time to time as provided by Law. Newark, N.J., March 18, 1985. THOMAS J. D'ALESSIO, Sheriff. Penner, McGovern & Vargo, Attorneys. The Bloomfield Life Mar. 28. Fee: \$71.44 No. B085-12

SHERIFF'S SALE SUPERIOR COURT OF NEW JERSEY, CHANCERY DIVISION, ESSEX COUNTY, DOCKET NO. F-6150-83 NEW JERSEY MORTGAGE FINANCE AGENCY, PLAINTIFF vs. ARTHUR WEST, JR., et ux, et al. DEFENDANTS. Execution for Sale of Mortgaged Premises.

By virtue of the above stated writ of Execution, to be directed, I shall expose for sale by Public Auction, in SHERIFF'S OFFICE, Essex County Courts Building in Newark, on Tuesday, the 23rd day of April next, at one-thirty P.M., (Preceding Time) Property to be sold is located in the City of East Orange, County of Essex and State of New Jersey. The approximate amount of the Judgment to be satisfied by said sale is the sum of FORTY FIVE THOUSAND THREE HUNDRED SIXTY SEVEN DOLLARS AND ONE CENT (\$45,367.01), together with the costs of this sale.

The Sheriff reserves the right to adjourn the sale from time to time as provided by Law. Newark, N.J., March 18, 1985. THOMAS J. D'ALESSIO, Sheriff. Penner, McGovern & Vargo, Attorneys. The Bloomfield Life Mar. 28. Fee: \$71.44 No. B085-12

SHERIFF'S SALE SUPERIOR COURT OF NEW JERSEY, CHANCERY DIVISION, ESSEX COUNTY, DOCKET NO. F-6150-83 NEW JERSEY MORTGAGE FINANCE AGENCY, PLAINTIFF vs. ARTHUR WEST, JR., et ux, et al. DEFENDANTS. Execution for Sale of Mortgaged Premises.

By virtue of the above stated writ of Execution, to be directed, I shall expose for sale by Public Auction, in SHERIFF'S OFFICE, Essex County Courts Building in Newark, on Tuesday, the 23rd day of April next, at one-thirty P.M., (Preceding Time) Property to be sold is located in the City of East Orange, County of Essex and State of New Jersey. The approximate amount of the Judgment to be satisfied by said sale is the sum of FORTY FIVE THOUSAND THREE HUNDRED SIXTY SEVEN DOLLARS AND ONE CENT (\$45,367.01), together with the costs of this sale.

The Sheriff reserves the right to adjourn the sale from time to time as provided by Law. Newark, N.J., March 18, 1985. THOMAS J. D'ALESSIO, Sheriff. Penner, McGovern & Vargo, Attorneys. The Bloomfield Life Mar. 28. Fee: \$71.44 No. B085-12

SHERIFF'S SALE SUPERIOR COURT OF NEW JERSEY, CHANCERY DIVISION, ESSEX COUNTY, DOCKET NO. F-6150-83 NEW JERSEY MORTGAGE FINANCE AGENCY, PLAINTIFF vs. ARTHUR WEST, JR., et ux, et al. DEFENDANTS. Execution for Sale of Mortgaged Premises.

By virtue of the above stated writ of Execution, to be directed, I shall expose for sale by Public Auction, in SHERIFF'S OFFICE, Essex County Courts Building in Newark, on Tuesday, the 23rd day of April next, at one-thirty P.M., (Preceding Time) Property to be sold is located in the City of East Orange, County of Essex and State of New Jersey. The approximate amount of the Judgment to be satisfied by said sale is the sum of FORTY FIVE THOUSAND THREE HUNDRED SIXTY SEVEN DOLLARS AND ONE CENT (\$45,367.01), together with the costs of this sale.

The Sheriff reserves the right to adjourn the sale from time to time as provided by Law. Newark, N.J., March 18, 1985. THOMAS J. D'ALESSIO, Sheriff. Penner, McGovern & Vargo, Attorneys. The Bloomfield Life Mar. 28. Fee: \$71.44 No. B085-12

SHERIFF'S SALE SUPERIOR COURT OF NEW JERSEY, CHANCERY DIVISION, ESSEX COUNTY, DOCKET NO. F-6150-83 NEW JERSEY MORTGAGE FINANCE AGENCY, PLAINTIFF vs. ARTHUR WEST, JR., et ux, et al. DEFENDANTS. Execution for Sale of Mortgaged Premises.

By virtue of the above stated writ of Execution, to be directed, I shall expose for sale by Public Auction, in SHERIFF'S OFFICE, Essex County Courts Building in Newark, on Tuesday, the 23rd day of April next, at one-thirty P.M., (Preceding Time) Property to be sold is located in the City of East Orange, County of Essex and State of New Jersey. The approximate amount of the Judgment to be satisfied by said sale is the sum of FORTY FIVE THOUSAND THREE HUNDRED SIXTY SEVEN DOLLARS AND ONE CENT (\$45,367.01), together with the costs of this sale.

The Sheriff reserves the right to adjourn the sale from time to time as provided by Law.

# Buy Theirs & Try Ours



## ShopRite Coupon

Buy One (1) 12-oz. Jar  
**Smucker's Strawberry Preserves**  
OR ANY OTHER NATIONAL BRAND

**AND GET THIS**

One (1) 12-Oz. Jar  
**ShopRite Strawberry Preserves FREE**  
WITH THIS COUPON AND ADDITIONAL PURCHASE OF 17.50 OR MORE

SAVE .79

Coupon good at any ShopRite market. Limit one per family. Purchase requirement excludes products prohibited by law. Effective Sun. Apr. 7 thru Sat. Apr. 13, 1985.

## ShopRite Coupon

Buy One (1) 10-oz. Pkg. of Leaf or  
**Birds Eye Chopped Spinach**  
OR ANY OTHER NATIONAL BRAND

**AND GET THIS**

One (1) 10-oz. Pkg. of Leaf or  
**ShopRite Chopped Spinach FREE**  
WITH THIS COUPON AND ADDITIONAL PURCHASE OF 17.50 OR MORE

SAVE .34

Coupon good at any ShopRite market. Limit one per family. Purchase requirement excludes products prohibited by law. Effective Sun. Apr. 7 thru Sat. Apr. 13, 1985.

## ShopRite Coupon

Buy One (1) 6 1/2-oz. Can in Oil or Water of  
**Star-Kist Chunk Light Tuna**  
OR ANY OTHER NATIONAL BRAND

**AND GET THIS**

One (1) 6 1/2-Oz. Can in Oil or Water  
**ShopRite Chunk Light Tuna FREE**  
WITH THIS COUPON AND ADDITIONAL PURCHASE OF 17.50 OR MORE

SAVE .49

Coupon good at any ShopRite market. Limit one per family. Purchase requirement excludes products prohibited by law. Effective Sun. Apr. 7 thru Sat. Apr. 13, 1985.

## ShopRite Coupon

Buy One (1) 1-lb. Pkg. of  
**Ball Park Franks**  
OR ANY OTHER NATIONAL BRAND

**AND GET THIS**

One (1) 1-lb. Pkg. of  
**ShopRite Hot Dogs FREE**  
WITH THIS COUPON AND ADDITIONAL PURCHASE OF 17.50 OR MORE

SAVE 1.19

Coupon good at any ShopRite market. Limit one per family. Purchase requirement excludes products prohibited by law. Effective Sun. Apr. 7 thru Sat. Apr. 13, 1985.

## The MEATING® Place

RIB CUT PORK ROAST OR

# Center Cut Pork Chops

1.49 lb. ANY SIZE PACKAGE

NOT LESS THAN  
80% Lean  
Ground Beef

# 1.39

ANY SIZE PKG. lb.

U.S.D.A. CHOICE BEEF  
Beef Shoulder  
London Broil

# 1.89

lb.

LOIN PORTION, 9-11 CHOPS	
Pork Chop Combo	1.09 lb.
MEATY RIB PORTION	
Pork Loin for BBQ	1.19 lb.
RIB PORTION, 7 RIBS	
Pork Loin Roast	.89 lb.
LOIN PORTION, EQUIV. TO 7 RIBS	
Pork Loin Roast	.99 lb.

U.S.D.A. CHOICE BONELESS BEEF	
Top Chuck Steak	1.99 lb.
FRESH AMERICAN, BLADE CUT	
Shoulder Lamb Chops	1.89 lb.
PERDUCE CHICKEN WINGS OR WHOLE WITH HIGHS (ANY SIZE PKG.)	
Chicken Legs	.79 lb.
PERDUCE, QUICK TO FIX (ANY SIZE PKG.)	
Chicken Drumsticks	.89 lb.

## The Produce Place

<b>THOMPSON IMPORTED Seedless Grapes</b>	lb. <b>.79</b>
LARGE 32 SIZE, FLORIDA	
Seedless Grapefruit	3 for .89
36 SIZE	
Calif. Artichokes	3 for 1.00
U.S. #1	
Calif. Carrots	3 1-lb. bags 1.00

<b>WASHED OR NATURAL Fresh Mushrooms</b>	12-oz. pkg. <b>.89</b>
FRESH TENDER	
Green Beans	lb. .69
SUPER SELECT	
Crisp Cucumbers	4 for .99
HIGH IN IRON & VITAMINS	
Fresh Spinach	10-oz. bag .89

## The Dairy Place

<b>ALL FLAVORS La Yogurt Yogurt</b>	3 6-oz. conts. <b>\$1</b>
REG. QUARTERS, LAND O LAKES OR	
Blue Bonnet Margarine	1-lb. pkg. .69
CITRUS HILL	
Orange Juice	1/2-gal. cart. 1.69
AXELROD	
Sour Cream	1-pt. cont. .89

## The Appy Place

<b>STORE SLICED, NORWESTERN Turkey Breast</b>	lb. <b>3.99</b>
STORE SLICED, FRENCH IMPORTED	
Swiss Cheese	1/2-lb. 1.79
STORE SLICED	
Cooked Pastrami	lb. 2.99
ARMOUR GENOA OR	
Hard Salami	lb. 2.99

## The Deli Place

<b>MEAT, BEEF OR DINNER ShopRite Franks</b>	1 lb. pkg. <b>1.19</b>
ShopRite	
Chicken Franks	1-lb. pkg. .89
ShopRite CHICKEN	
Cheese Franks	1-lb. pkg. 1.19
SLICED	
Herrud Bacon	1-lb. pkg. 1.49

## The Fish Market

<b>U.S. GRADE 'A', NEW ENGLAND Fresh Fillet Of Flounder*</b>	lb. <b>3.99</b>
U.S. GRADE 'A' FRESH (BOSTON BLUE)	
Fillet Of Pollock*	lb. 1.69
U.S. GRADE 'A', SWEET & TENDER	
Fresh Small Scallops*	lb. 3.39
FROZEN & THAWED, 41-50 PER LB.	
Medium Shrimp	lb. 4.99

## The Grocery Place

CHUNK LIGHT, IN OIL OR WATER

# ShopRite Tuna

Light Tuna Chunk Style

6 1/2-oz. can **.49**

ALL VARIETIES

# Viva Towels

90-ct. roll **.69**

ShopRite Strawberry Preserves	12-oz. jar .79
REGULAR GRIND	
Chock Full O' Nuts Coffee	1-lb. can 1.99
POPE 10%	
Blended Oil	1-gal. 3.99
INSTANT COFFEE	
Maxwell House	8-oz. 3.59
WHY PAY MORE™	
Tetley Tea Bags	100-ct. box 1.99
CLEAR OR NATURAL, RED CHEEK	
Apple Juice	1/2-gal. 1.29
ALL VARIETIES, 10-PACK	
Capri Sun Drinks	67.5-oz. 1-w.pkg. 1.99

WHY PAY MORE™	
Farm Flavor Apple Juice	1/2-gal. 1.79
BRIGHETTI, CAPPELLINI, EL BARNI, NIGTONI, TUBETTINI	
LINGUINE OR SEMI DI MELON	
D'Amelia Pasta	1-lb. 3 pks. \$1
ShopRite	
Corned Beef	12-oz. can .99
ShopRite	
Mayonnaise	1-qt. .99
ALL VARIETIES, SALAD	
Pfeiffer's Dressing	1-pt. 1.99
TOMATO	
ShopRite Catsup	2-lb. .79
PEPSI FREE, REG. OR DIET	
Pepsi Cola	3-ltr. 1.59

**Senior Citizen Discount Policy**

Sixty-Two or older... You are welcome to save a full 10% Off our regular Low Prescription prices. No involved applications to fill out. Simply present proof of age and we will immediately issue a Golden Age Discount Card that can be used with your first purchase.

This card is for prescription purposes only and is not applicable to P.A.A. or Third Party Prescriptions.

**Expires April 13, 1985**

**Answer 2 At-Home Early Pregnancy Test Kit (contains 2 Complete Tests)**

\$8.99  
-1.00-mfg. rebate  
**7.99-your cost after rebate**

**Early Detector In-Home Test To Detect Blood in Stool**

\$4.99  
-2.00-mfg. rebate  
2.99-your cost after rebate

**Sharp Digital Fever Thermometer**

\$7.99

**B-D Autoclave Device**

\$8.99  
-4.00-mfg. rebate  
**4.99-your cost after rebate**

**B-D Lancets**

\$4.99

**Bristoline Manual Blood Pressure Kit #1555**

\$10.99

**Visidex II**

\$12.99

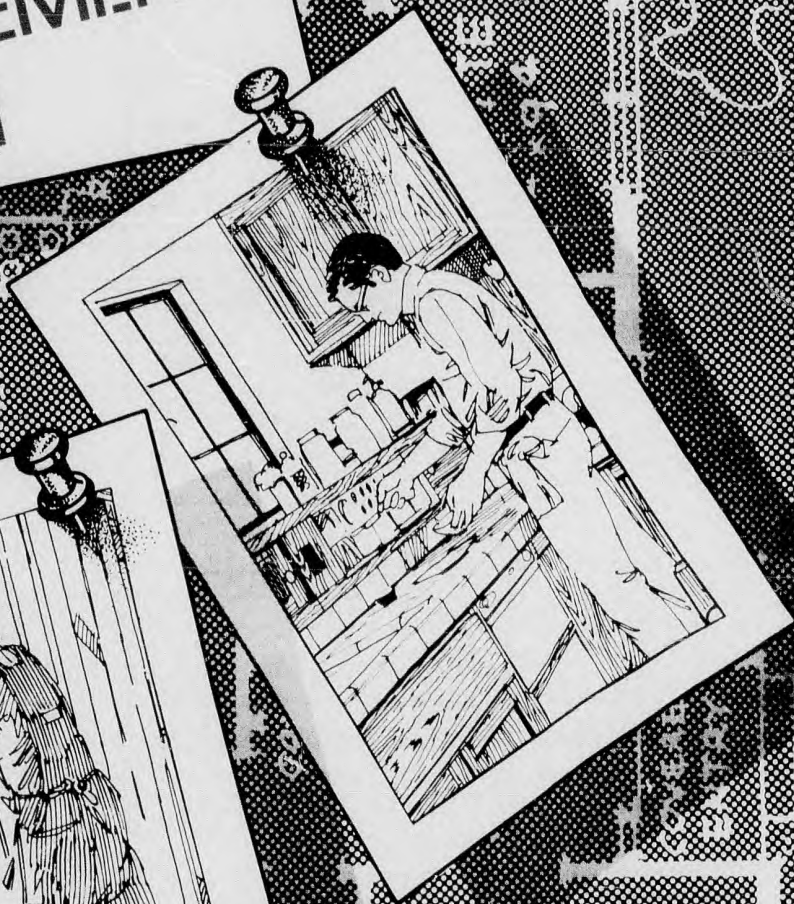
**Tes-Tape**

\$4.59

# ShopRite Is The Low Price Leader!

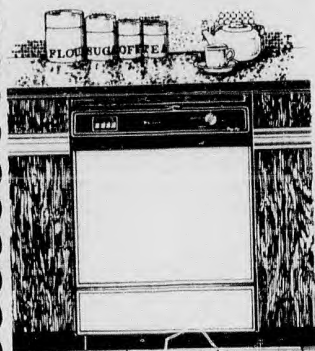
In order to assure a sufficient supply of sales items for all our customers, we must reserve the right to limit the purchase to units of 4 of any sales items, except where otherwise noted. Not responsible for typographical errors. Prices effective Sun. Apr. 7 thru Sat. Apr. 13, 1985. None sold to other retailers or wholesalers. Artwork does not necessarily represent item on sale, it is for display purposes only. Copyright WAKEFERN FOOD CORPORATION 1985.

# IT'S NATIONAL HOME IMPROVEMENT MONTH



Supplement to  
Nutley Sun • Belleville Times • Bloomfield Life  
April 11, 1985

# Gibson® CIRCUS OF SAVINGS



Model SU24PZ

— \$289<sup>00</sup> —



**Beck's T.V. & Appliances**  
196 Franklin Ave. Nutley  
667-2275

## GANTNER'S INC.

160 Franklin Ave., Nutley  
Housewares - Hardware - Plumbing & Electrical  
Supplies - Stationery - Paint - Garden Supplies

### 20% OFF

Farberware Corningware  
Revere Ware - Corelle Ware - T-Fal

### PAINT SPECIAL

Dutch Boy - Latex Flat Wall Paint \$8.99 gal.  
Dutch Boy - Latex Semigloss \$12.99 gal.  
Exterior-Latex House Paint \$12.99 gal.

All Frisco Paint \$1.00 off on any gallon

### Scott Fertilizer

Turf Builder 5000 sq. ft. \$8.95  
Less \$2.00 Factory Rebate

### Basement

20% to 50% Off  
All Childrens Clothes

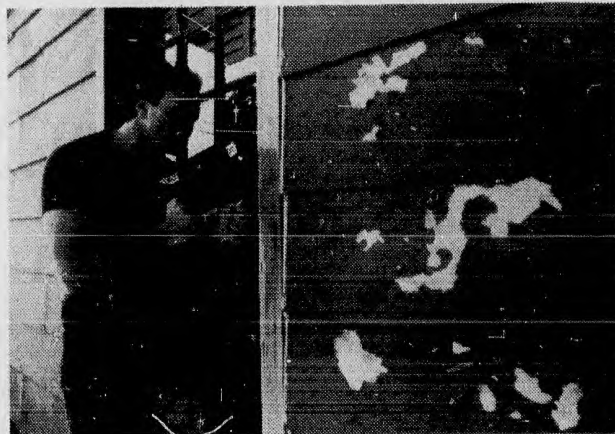
### 20% Off

Towels, Sheets & Pillow Cases  
Savings In All Depts.

Mon. & Fri. 9:00 a.m. to 8:15 p.m.  
Tues., Wed., Thurs. & Sat. 9:00 a.m. to 5:45 p.m.

667-6622

## Old paint's no longer a problem



**SEASON'S HEATINGS** — Spring is paint-up time and the messiest part of that job — taking off the old stuff — is much easier with the new Heat 'N Strip™ electric paint remover and heat gun. It's as effective on siding, shutters and window trim as it is on furniture or boats. A feathery 1½ lbs. and as easy to handle as a hair dryer, the Black & Decker tool saves not only time but lots of work as well. And it is a considerable improvement over rough abrasives, dangerous flames and messy chemicals. The tool is equally useful for removing and replacing floor tiles and for thawing frozen pipes. The housing of the gun is made of impact-resistant material, the barrel has heat-dissipating vanes to maintain comfortable temperatures at the handle, and it is double-insulated for additional electrical safety. Black & Decker also offers a selection of special nozzle attachments to deflect heat from window glass, concentrate the heat on a small area or direct it across a wider work surface. The Heat 'N Strip heat gun carries a full two-year Black & Decker warranty for home use, and has an approximate retail value of \$49.99.



## Gardeners can look forward to new plant varieties for spring

As the nation's gardeners are planning for 1985, the new seed catalogs are arriving. The armchair gardeners' menu has expanded in 1985 with choices that include many new varieties.

Listed below are just a sampling of the new offerings to the nation's gardening households for the 1985 gardening season:

- **Corn** — "So super sweet, it's double or triple the sweetness of natural corn varieties."

- **Tayberry** — "Sweet-tart large red berry, new to the U.S., a cross between a blackberry and raspberry."

- **Strawberries** — "New varieties that will bear fruit all summer long."

- **Blueberries** — "A variety tolerant to -30 degrees F and still will yield three to five pounds per bush."

- **Melons** — "A heritage variety, Jenny Lind, the sweetest cantaloupe ever and Cameo, a white melon that will ripen after harvest."

- **Lettuce** — "New introduction, Red Sails, a red leaf lettuce bred to provide more nutrition than any lettuce; doesn't bolt as quickly in heat."

- **Carrots** — "Varieties so rich in vitamin A (carotene), they're called A Plus; also Lindoro, a carrot developed for flavor, shape, smoothness and keeping quality."

- **Tomatoes** — "Variety of salad tomato with superior flavor and the look of yellow lemons; new Roma tomatoes, a paste tomato that outproduces other varieties by seven times;"

- **Beans** — "Earli-Serve, a variety that goes from package to table in 41 days;"

- **Flowers** — 1985 winners include new pink petunias with 4" blossoms, new mini impatiens series, new gazania variety with new light tangerine color, new celosia, and more."

Major seed companies' efforts have resulted in many new varieties developed to make gardening easier and more successful. Seed companies have combined the best features of hardiness and disease-resistance with the better taste and size of varieties of the most popular vegetables and fruits.

The result is that more of America's gardeners are growing more varieties of garden vegetables and fruits, according to sources at Gardens for All, the National Association for Gardening, based in Burlington, Vermont.

"Each year we have taken a look at many of the new varieties and featured them in our newsmagazine for gardeners," said Charles Scott, president of the non-profit membership organization.

"America's 34 million backyard and community gardening households and 10 million container-gardening households can benefit from knowing what these new varieties can bring to their gardens in 1985," continued Scott.

A sample copy of the Gardens for All Newsmagazine, which features many of the new '85 varieties from a number of seed companies, is available by sending \$1 to cover postage and handling to Gardens for All, 180HH Flynn Avenue, Burlington, VT 05401.

# Lawn Gone?



## Time to call Lawn King

All lawns need an annual program of lawn care and every program must contain both granular and spray. Some chemicals work better when applied in a granular form, and others, like weed controls and post emergent crab grass controls, work better in a liquid form. All lawns also require periodic aeration and seed, but only Lawn King gives all these via **LAWN COMBINE & SPRAY** — THE BETTER WAY! WE KNOW IT'S THE ONLY WAY!!!

### LAWN KING ANNUAL PROGRAM

- |                           |                           |                           |                                  |                  |
|---------------------------|---------------------------|---------------------------|----------------------------------|------------------|
| 1. Balanced Fertilization | 2. Balanced Fertilization | 3. Balanced Fertilization | 4. Power Aeration                | 5. Fertilization |
| Broadleaf                 | Broadleaf                 | Broadleaf                 | Power Rolling                    | Weed Control     |
| Weed Control              | Weed Control              | Weed Control              | Balanced Fertilization           | Lime             |
| Pre-emergent              | Chinch Bug Control        | Micro-Nutrients           | Broadleaf                        |                  |
| Crab Grass Control        | Sod Webworm Control       | Chinch Bug Control        | Weed Control                     |                  |
|                           | Grub Control              | Sod Webworm Control       | Post-Emergent Crab Grass Control |                  |
|                           |                           |                           | Seed (1 lb./1000)                |                  |
|                           |                           |                           | Lime                             |                  |

We are chemical applicators, not miracle workers. We know what your lawn needs and when it needs it. What you see in the program, is what you get. Top quality chemicals and seed - only the best - that's all we use. There's no such thing as specially formulated for drought.

Aeration, seed and lime are part of our program. Fungus controls and grub controls have always been part of our program - not options at extra cost when you need them. By the time you know you need them it's too late anyway.

Someone will call to discuss the lawn with you. There's a one time charge if you need any extras like a preparatory service, extra seed or additional time. We'll tell you what you need. We may not be the cheapest lawn service around but we are the only ones who give your lawn everything it needs at a price you can afford to pay. You can figure your costs from the chart below. No contracts to sign, no guarantees, no promises, and no nonsense. Pay from service to service or prepay for the year and we'll give you a 5% discount too!

If you compare our program and prices with any other company, you'll find that either they are charging too much, or we are not charging enough! Look at it real close and you may even arrive at the conclusion that not only is it better to do business with us - it's cheaper too!

#### OPTIONAL PREPARATORY SERVICE

- |                       |                         |
|-----------------------|-------------------------|
| Double Power Aeration | Balanced Fertilization  |
| Double Power Rolling  | Fungus Control          |
| Double Weed Control   | Grub Control (Granular) |

1¢ PER SQUARE FOOT (min. 3,000 sq. ft.)



SQUARE FOOTAGE	QUARTERLY INSTALLMENT	TOTAL ANNUAL COST
3000	38.25	145.00
4000	42.24	168.96
5000	51.12	192.92
6000	54.22	216.88
7000	62.97	251.88

LARGER LAWNS PRICED PROPORTIONATELY.  
ALL PRICES PLUS SALES TAX.



## LAWN GONE?

Time to Call...

All lawns need an annual program of lawn care and every program must contain both granular and spray. Some chemicals work better when applied in a granular form, and others, like weed controls and post emergent crab grass controls, work better in liquid form. All lawns also require periodic aeration and seed, but only Lawn King gives all these via Lawn Combine and spray, and still at less than 1¢ per square foot per visit.



Free Estimates



Nutley, Belleville, Bloomfield  
994-2255/743-1025

Lawn King

with this coupon

# \$10.00 OFF or 5%

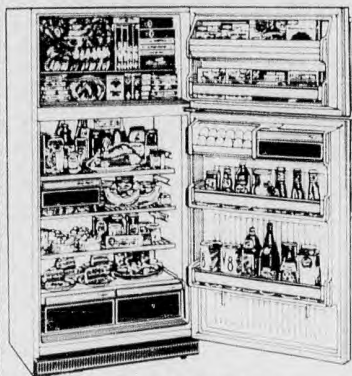
(Whichever is greater)

On Your First Year's Service (Minimum 3,000 sq. ft.)

Limit one coupon per customer

coupon valid with new customers only

## Gibson® CIRCUS OF SAVINGS



Model RT19F7WR  
19 Cu. Ft.  
10 Year Warranty

— \$679<sup>00</sup> —



**Beck's T.V. & Appliances**  
196 Franklin Ave. Nutley  
667-2275



## Enjoy Your Home Today IMPROVE FOR YOUR COMFORT



**HOME  
IMPROVEMENT  
LOANS  
HOME  
IMPROVEMENT  
LOANS  
HOME  
IMPROVEMENT  
LOANS**

**Build Equity In Your Home  
...For Resale!**



PLAN TODAY  IMPROVE TODAY  ENJOY TOMORROW

**American Savings  
AND LOAN ASSOCIATION**

365 Broad Street, Bloomfield, NJ 07003 • Phone: 748-3600  
Hours Daily: 9:00 AM to 4:00 PM  
Monday Evenings: 6:00 PM to 8:00 PM • Friday: 9:00 AM to 7:30 PM

*Your Community Minded Savings & Loan*

## Seller and buyer both gain with energy-efficient home

Buying a home is the biggest investment decision most people will ever make. Obviously, many factors will influence a home buying decision.

Size, location, proximity to work, and public transportation are all important factors, but a home's energy consumption is more and more important.

In a recent National Homebuying Survey conducted by the National Association of Realtors, 72 percent of the respondents said an energy-efficient home — one that consumes energy wisely — was important to their purchasing decision.

home, an income of \$56,500 would be needed for the same mortgage.

If you already own a home, and the rising price of energy is playing havoc with your finances, you should consider investing in energy-saving features such as multi-pane windows, efficient appliances and additional fiber glass insulation.

CertainTeed Corporation, Valley Forge, Pa., for instance, manufactures fiber glass insulation that can be easily installed by the do-it-yourselfer.

### Investing in future

By investing in these features, you'll save money today by lowering your energy bills, and you'll make the house more desirable and also increase tomorrow's resale value.

Many states, banks, utilities and manufacturers are offering different kinds of incentives to encourage investment in energy-saving features.

Your utility company may offer special rebates or low-interest loan programs to improve the efficiency of your home.

Many states often have special low-interest loans or other programs to promote your conservation investment.

### Efficiency advantage

In fact, many respondents were more concerned that the home be energy-efficient — proper insulation, storm windows, energy-saving appliances, efficient heating and cooling — than how close the home was to shopping and transportation.

Buyers of energy-efficient homes are receiving better breaks from lending institutions who are willing to relax income standards.

The rationale is that owners of efficient homes will spend less on heating and cooling; therefore, will have more income available to make house payments; thus, buyers can borrow more money.



SHAKE SHINGLE ROOF is made of durable aluminum by Classic Products with a 40 year warranty to outlast ordinary roofing materials.

## High performance glass lowers cost of energy

Future historians may refer to the '80s as the energy decade. No issue has had so profound an impact on American life as the high cost of energy. And, despite occasional fluctuations, the price of energy will probably continue to rise over the long run.

Because of rising energy costs, consumers are searching for ways to save energy, yet maintain their standard of living. One way to do it in both new construction and remodeling, says Andersen Corporation, is to install windows that are designed to conserve energy.

Recently, the Bayport, Minn., manufacturer of windows and gliding patio doors, introduced high-performance insulating glass which, tests have shown, is even more energy-efficient than triple-pane glass, and 42 percent better at saving energy than ordinary double-pane insulating glass.

High-performance insulating glass consists of a micro-tin metallic coating that is applied to the airspace surface of the inside pane.

It is transparent and bonded to the glass so there is nothing to install, operate or clean; nor will the coating peel, crack,

wrinkle or discolor.

In summer, high-performance insulating glass reduces the passage of heat radiating from concrete sidewalks, brick patios or asphalt streets. This keeps the indoors cooler and reduces the load on air conditioners.

The new glass also prevents 80 percent of the sun's ultra-violet rays from entering a home, and helps reduce fading of upholstery, carpeting and drapes.

In winter, the special glazing admits most of the warming rays of the sun, yet blocks the loss of interior radiant heat generated by the sun.

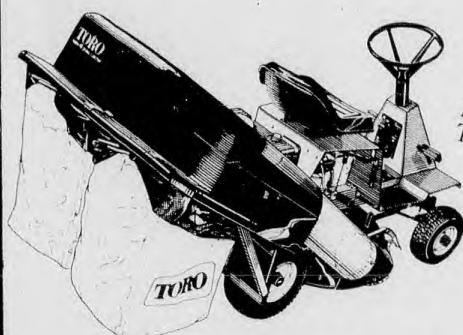
What this means is that the inside surface of the glass is 10 degrees warmer than uncoated double-pane insulating glass. This not only improves indoor comfort, but reduces the possibility of condensation.

Available in Andersen Perma-Shield casement, awning and double-hung windows as well as patio doors and Andersen roof windows, high-performance insulating glass is one-third lighter than triple-pane insulating glass. This means windows are easier to handle, install and operate.

# NOW THE BEST COSTS LESS

COME IN TO JERSEY POWER EQUIPMENT AND SAVE

It may seem early  
to buy a riding mower  
but to save \$200,  
you're right on time.



Model 59122  
Twin Bagger

Right now is the perfect time to save on this Toro Rider. Because during the Toro Pre-season Rider Sale, we're taking \$200 off the regular price. It may seem too early to think about mowing now, but you had better hurry. Once it's time to mow the lawn, the sale will be over.

When you choose  
a Toro Lawnmower,  
the option is yours.



FREE DETHATCHER  
when you buy a rear wheel  
drive Rear Bagging Mower.

FREE LEAF SHREDDER  
when you buy a Rear  
Bagging Mower.

FREE SIDE  
DISCHARGE BAG KIT  
when you buy a Side  
Discharge Mower.

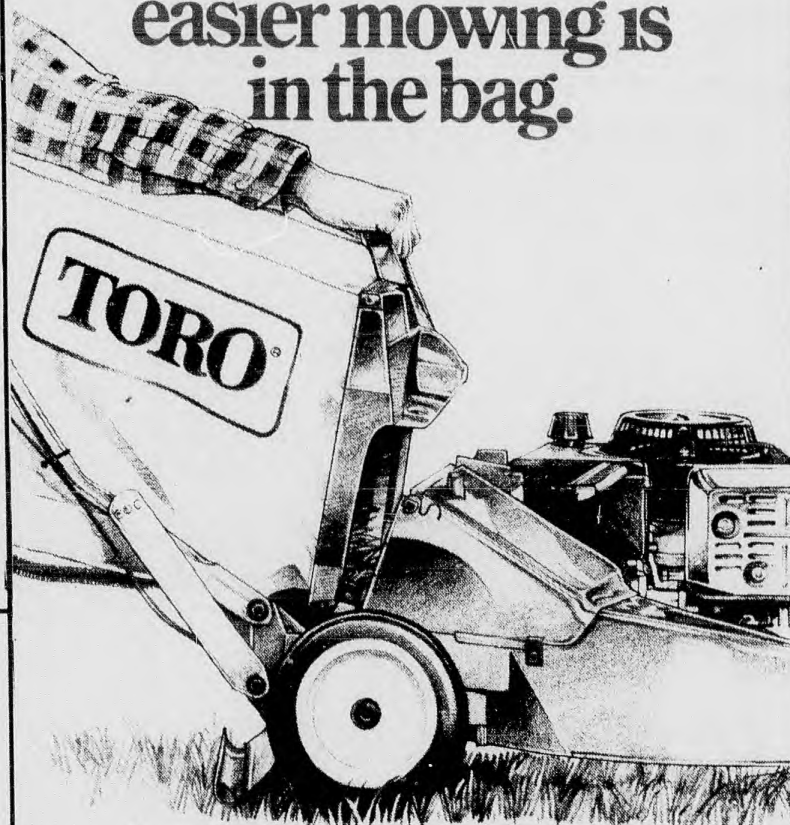
FREE SIDE  
DISCHARGE  
CHUTE when you  
buy a Rear Bagging  
Mower.

Right now, when you buy a Toro mower you'll receive a free accessory valued up to \$59.95, while supplies last. Choose from our line of rear bagging or side discharge models.

**Two-Year Limited Warranty.** Toro is known for quality and durability. Here's the proof.

**No Money Down.** Instant Toro credit available to qualified buyers. Ask for details.

The secret to  
easier mowing is  
in the bag.



Bagging shouldn't add work to mowing. That's why Toro made their rear baggers with the easiest bagging system Toro has ever made. The Easy-Empty™ rear bag detaches quickly and simply. Most Toro rear baggers hold up to 2½ bushels of clippings or leaves, so you spend less time emptying and less time mowing.

**Two-Year Limited Warranty.** Toro is known for quality and durability. Here's the proof.

**No Money Down.** Instant Toro credit available to qualified buyers. Ask for details.

**TORO**

Haven't you done without  
a Toro long enough?

**Jersey Power Equipment**  
58 Main Ave. Passaic, N.J.

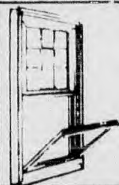
777-6886

You'll come for our prices  
and stay for our service

## ESSEX REPLACEMENT

### Doors & Windows

419 Broad Street, Bloomfield 743-8603



**\$25.00 OFF**

Vinyl Or  
Aluminum  
Replacement And  
Storm Windows

**\$50.00 OFF**

Screen And  
Storm Doors  
Solid Core



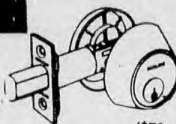
**\$50.00 OFF**

Garage Doors  
Wood  
Aluminum  
Or Steel



**FREE**

Deadbolt  
Lock  
With Any  
Door  
Purchase



**SCHLAGE**  
Part of Worldwide  
Ingersoll-Rand (\$79 Value)

**\$75.00 OFF**

Steel Clad  
Replacement  
Door

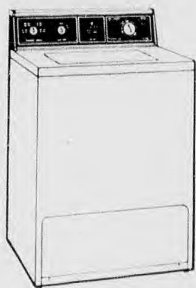


**FREE**  
Backer Board  
with  
Aluminum  
or Vinyl  
Siding Job



"We are a participating contractor in the  
PSE&G Seal-up and Save Loan Program"

## Gibson® CIRCUS OF SAVINGS



Model WA28DS  
10 Year Transmission  
10 Year Tube Warranty

— \$399<sup>00</sup> —



**Beck's T.V. & Appliances**  
196 Franklin Ave. Nutley  
667-2275

## Homeowners rediscover luxurious stained glass look

The term "stained glass" once brought to mind gothic churches and Tiffany lamps and, until recently, was used primarily in windows in Victorian homes to preserve the desired 19th century look.

Today, homeowners are using this colorful window treatment alternative to replace curtains, blinds, shades and shutters, in addition to other new and exciting decorative uses.

Homeowners can create colorful custom window designs to complement virtually any room's interior design scheme.

Stained glass creations on windows and door panels can provide a degree of privacy or turn an unsightly view into a decorating asset, while still allowing the natural light to shine through.

"The increased use of the stained glass look also goes hand-in-hand with the consumers' philosophy of improving their present homes rather than moving," notes Barry Rupp, President of Stained Glass Overlay, Inc., Costa Mesa, Cal.

Many consumers prefer the company's product because it can be applied directly onto existing glass, mirror or Plexiglas surfaces.

Though it costs much less than its cut glass counterpart, the overlay stained glass product with its true lead cane gives windows the same appearance and texture. Furthermore, the finished product is more durable—it actually strengthens and insulates the glass.

When cut stained glass is used, glass panes must be removed from windows and doors and replaced with the individual pieces of colored glass and leading.

In this application, the stained glass would be too heavy to be used on ceiling panels or sliding doors, and too delicate to be used in rooms frequented by young children.

Because more intricate window designs can be created with the Stained Glass Overlay process, consumers have the freedom to choose from a wide variety of patterns and colors to fit in with any contemporary, traditional or Art Deco design theme.

Designs can range from floral patterns to animal motifs or cityscapes, to match fabric patterns or contrast with the room's interior decor.



**INTRICATELY DETAILED** stained glass simulations, these colorful peacocks provide a stunning accent to any living room, dining room or den.

Windows in virtually every room in the house can be enriched with the look of stained glass. A whimsical clown figure or fairy tale setting would be great for a child's room or playroom; a family crest, sports logo or abstract design would make a nice accent piece in a living room, den or foyer; and, of course, kitchen and bathrooms make excellent showcases for the colorful stained glass designs.

The stained glass look can also be incorporated into homes and apartments as focal points in a room—skylights, sliding glass doors and bay windows—and as accent pieces on mirrors, cabinet doors, ceiling panels, lighting fixtures and glass-topped tables.

Decorative wall murals, entryway side-lights and shower stalls are additional ways in which the color and texture of the look of stained glass can create a visual experience in the home.

Home decorators who are interested in learning more about this colorful new window treatment which improves on the look of a centuries-old craft, can call Stained Glass Overlay, Inc. (toll free) #800-654-7666 or write to the company at 151 Kalmus Drive, J-4, Costa Mesa, CA 92626.



## Brookdale Floor Covering

338-5855 • 338-5856

Featuring

- Brand Name Carpet
- Linoleum & Tile
- Area Rugs
- Hartco Wood Flooring
- GMT Custom Vinyl
- Remnants



1109 Broad St. • Bloomfield

just 3 miles from  
Bloomfield Center

## Breakthrough simplifies tile ceiling installation

Installing a new tile ceiling is a lot easier than it used to be—and that's good news for the many thousands of do-it-yourselfers who like to cap a room remodeling with a fresh new ceiling.

The old tile installation methods were a bit of a chore, maybe not so expensive or tedious as putting up or repairing a dry-wall or plaster ceiling, but a chore nonetheless.

Essentially, you could either cement the tiles (if you were covering up an unsightly existing ceiling) or staple them to wooden "furring strips" attached to joists in an unfinished room like a basement.

The cement method necessitated applying gunk to the back of each tile, sticking the tile onto the old ceiling and then stapling the tile flanges to give the cement time to "set up."

The furring strip method was no breeze either. First you had to buy the strips (not cheap, considering the inflation in lumber prices over the past decade or two), then nail them to the joists. After that you had to staple the tiles to the furring strips.

### Easy does it!

Now there's a far easier way to put up ceiling tiles. In fact, it's so much easier that the company that developed it calls the new installation system — can you guess? — Easy Up.

Everything you need comes in one compact, economical kit. The contents include

lightweight but sturdy metal tracks, metal clips, and nails. The 4-foot metal tracks are easy to handle and make installation a one-person job.

### Three simple steps

To install your new tile ceiling, all you do is:

- Nail up the metal track (using only a third as many nails as you would if you were putting up wooden furring strips);
- Position a tile on the track;
- Fasten it in place with a clip;
- Continue clipping up tiles till the whole ceiling surface is covered.

It really is as easy as one, two, three: Nail up the track, position the tile, clip it in place. There's no need for cumbersome furring strips, messy glue or tiring overhead stapling.

Another benefit of the Easy Up system is that precise measurements aren't crucial. Tiles can be adjusted or removed without damage. The system has a built-in "fudge factor" for the less-than-expert handyman.

But, best of all, now when you buy the Easy Up kit you get a 10-year guarantee for your new ceiling, if you buy the same company's tile. The ceiling tiles and Easy Up system were engineered to work together for best results and that's why the company can offer such an extended warranty.



## Aluminum rustic shingle roofs will last 40 years and longer

Homeowners tired of replacing worn out conventional shingle roofs every 10 years or so have another choice: Classic Products, Inc.'s Rustic Aluminum Shingles, which are warranted for 40 years. They provide the look of hand-split wood shakes, and offer energy savings and fire protection.

Rustic Shingles install directly over asphalt, fiberglass and some wood roofs to provide long-lasting, watertight protection. They stand up to the hot-cold, wet-dry cycles that cause wood, asphalt and fiberglass to decompose.

Aluminum shake shingles also save energy. An independent solar research team recently received an award from the U.S. Department of Energy for their work in determining that aluminum is an effective barrier in reducing heat infiltration through roofs. This keeps homes naturally cooler in summer and warmer in winter.

One homeowner in Victoria, Texas, reported that his electricity costs for air conditioning decreased more than 20 percent after having Rustic Shingles installed on his home.

Even though the weather was hotter, the homeowner maintained his home at 76 degrees at a cost of \$223 in June, and only \$176 in July after his new roof was installed.

Due to aluminum's certified reflection of 87.5 to 94.5 percent of radiant heat rays, common rooftop temperatures of 190 degrees and above are not passed on into the living quarters.

In winter, this process is reversed, with aluminum shingles reflecting heat back into the home. An integral urethane backer is available for extra insulation and savings.

Rustic Shingles come in a variety of colors to blend with any home design. Colors include Weathered Cedar, Antique Brown and Blackwatch, a grey-green coating with a built-in shadow line designed exclusively for Classic Products to provide the premium look of weathered wood shakes.

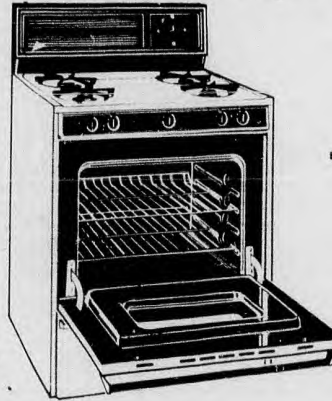
Classic Products' shingles are protected by a 40 year prorated warranty to not rust, peel, flake, chip or split. The two-coat baked acrylic enamel finish is continuously tested in the most severe weather conditions.

Flying sparks can ignite wood shakes, but not aluminum shingles. Rustic Shingle, therefore, has been the popular roof for over 25 years in areas prone to brush and outdoor fires. The product carries a Class A Underwriters Laboratory rating and is recommended by fire safety officials and insurance underwriters.

Moderate hail will not damage Rustic Shingles because of their deep texture and high strength aluminum alloy. The deep texture, combined with felt underlayment, breaks up the sound board effect so that rain and hail do not cause a noise problem.

For a free booklet with answers to questions most frequently asked about Rustic Shingle, write Dept. M-3, Classic Products, Inc., P.O. Box 701 Piqua, OH 45356.

## Gibson® CIRCUS OF SAVINGS



Model CG30M7  
30" Gas Range

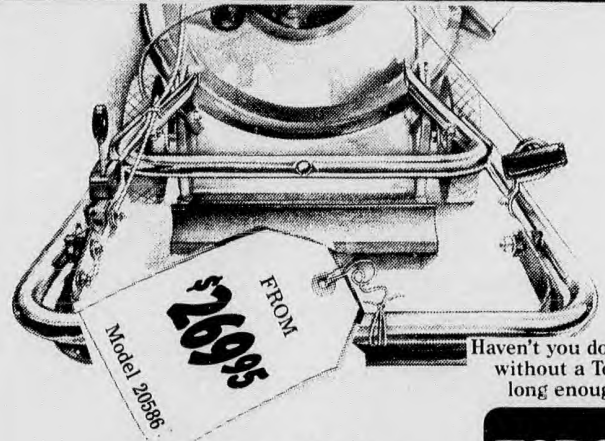
— \$389<sup>00</sup> —



## Beck's T.V. & Appliances

196 Franklin Ave. Nutley

667-2275



Haven't you done without a Toro long enough?®

**TORO®**

**There's one feature on this Toro that's less than you'd expect.**

Walk off with exceptional value on a Toro two-cycle or four-cycle mower. Each features Toro's exclusive Wind-Tunnel™ housing for clean, even cutting.

**Two-Year Limited Warranty.** Toro is known for quality and durability. Here's the proof.

**No Money Down.** Instant Toro credit available to qualified buyers. Ask for details.

Custom Blended Grass Seeds • Vegetable and Flower Seeds  
Fertilizers • Garden Chemicals • Garden Tools and Accessories  
Dog Foods • Cat Foods • Bird Seeds & Feeders • Peat Moss & Mulches

## Fischer's Feed Store, Inc.

Your Full Service Garden Supply Store

291 Hoover Ave. Bloomfield, N.J.

743-2656

## "THE GREAT COMBO"

**WONDERLAWN  
SUN & SHADE**



**SALE  
\$7.99**

REG. \$9.99

- COVERS 3600 SQ. FT.
- FOR A PERMANENT LAWN

**WONDERLAWN  
CONTROLLED  
RELEASE  
LAWN FERTILIZER**



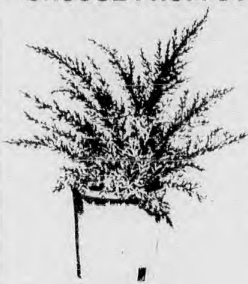
REG. 11.99  
**SALE  
\$6.99**

- 40% ORGANIC 26-4-5
- COVERS 5,000 SQ. FT.

**BUY BOTH FOR \$13.99**

## NURSERY STOCK SPECIAL

• CHOOSE FROM OVER 15 VARIETIES OF PLANTS



- ALBERTA SPRUCE
- EXBURY AZALEAS
- MUGHO PINES
- ASSORTED JUNIPERS

**\$7.99**

• ALL

EACH • BUY A MIX OF 6 FOR

**\$35.99**



**Glorion  
FERTILIZER &  
CRABGRASS  
PREVENTER**

- Kills crabgrass seedlings as they sprout. You're guaranteed a fine crabgrass-free lawn all season.
- Fertilizes with a premium food that grows a thick green lawn. Let us seed at the same time so you can make your lawn thicker.

**CLEARANCE SALE  
SAVE 50%**

REG. \$29.99

**NOW ONLY \$14.99**

Bag

**EASY EDGE  
HEAVY DUTY  
LAWN EDGING**



5x20 FT.

**ONLY  
\$10.39**

**NORTHLAND  
CEDAR  
MULCH**



**\$3.49** Bag

**\$9.99**

4 BAGS FOR

Never again will you  
have to waste time  
being a "Sprinkler-Watcher"

RainMatic: thousands  
in use from coast to coast



**RainMatic™ Waters  
Lawns & Gardens  
Automatically!**

RainMatic's automatic control of sprinklers switches them on and off up to 8 times a day and from 1 to 7 days a week. Each watering can be timed to last from one minute to more than 12 hours or any time in between.

Water at night or when you're away - skip watering on selected days - switch RainMatic to Manual when you want to do other gardening chores.

Set for a day a week or for an entire season if you want!

**New Freedom from Watering  
Chores with RainMatic**

- Attaches to your outside faucet in seconds, locks to prevent theft.
- Uses your existing hose and sprinklers - can control two or more sprinklers to cover large areas.
- Automates drip and trickle systems.
- Easy to set - as simple as pressing buttons on a pocket calculator.
- Weather-protected electronic circuit.
- No wiring - uses four long-life "D" alkaline batteries (not included).
- Shipped with Instruction Watering Guide booklet and one-year warranty.

**Only \$69.99**



5,000 Sq. Ft.  
REG. \$20.99

**SAVE  
48%**

**NOW ONLY**

**\$10.99**

Kills Crabgrass  
and Feeds you  
Lawn All in  
One Step!

**BIRD FOOD**



20 LB. Bag Reg. \$5.99 2 Bags **\$8.99**



**Potted  
ROSES**

**SALE 6.99**  
REG. 8.99

4 for **\$24.00**

**SPRING  
Bulbs**

MANY, MANY  
VARIETIES  
TO CHOOSE  
FROM  
Direct from Holland

We Fill  
Propane  
Tanks

Deliveries  
Available



**arbor greens inc.**

Your Primary Outlet For Home and Garden



**1100 Route 46 West, Clifton, N.J. 473-0300**

Next to Grossman's Lumberama

Sale While Supplies Last. Not responsible for Typographical Errors